

Product datasheet for **TA350932**

GCET1 (SERPINA9) Rabbit Polyclonal Antibody

Product data:

Product Type:	Primary Antibodies
Applications:	IHC, WB
Recommended Dilution:	WB: 500-2000 WB positive control: 293T and 231 cells, U937 and Raji cells IHC: 50-200 Positive control: Human thyroid cancer Predicted cell location: Cytoplasm
Reactivity:	Human
Host:	Rabbit
Isotype:	IgG
Clonality:	Polyclonal
Immunogen:	Synthetic peptide of human SERPINA9
Formulation:	pH7.4 PBS, 0.05% NaN ₃ , 40% Glycerol
Concentration:	lot specific
Purification:	Antigen affinity purification
Conjugation:	Unconjugated
Storage:	Store at -20°C as received.
Stability:	Stable for 12 months from date of receipt.
Predicted Protein Size:	47 kDa
Gene Name:	serpin family A member 9
Database Link:	NP_783866 Entrez Gene 327657 Human Q86WD7



[View online »](#)

Background:

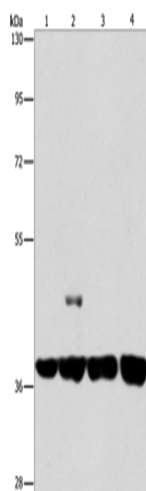
Serpin A9 also known as centerin or GCET1 is a protein that in humans is encoded by the SERPINA9 gene located on chromosome 14q32.1.[1] Serpin A9 is a member of the serpin family of serine protease inhibitors. The expression of SERPINA9 is restricted to germinal center B cells and lymphoid malignancies. SERPINA9 is likely to function in vivo in the germinal center as an efficient inhibitor of trypsin-like proteases. Highly expressed in normal germinal center (GC) B-cells and GC B-cell-derived malignancies.

Synonyms:

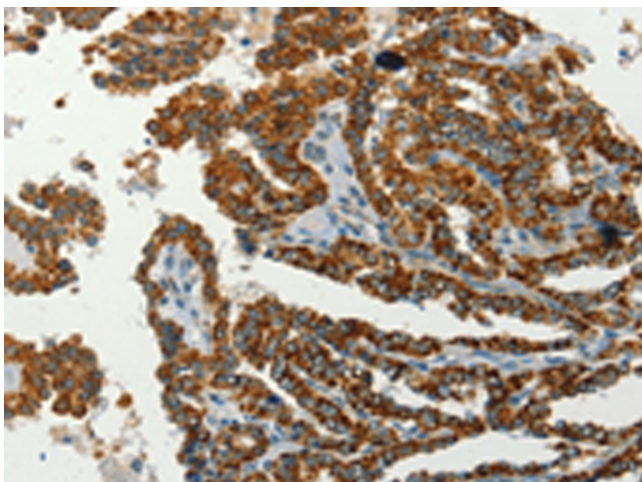
GCET1; SERPINA11; SERPINA11b

Protein Families:

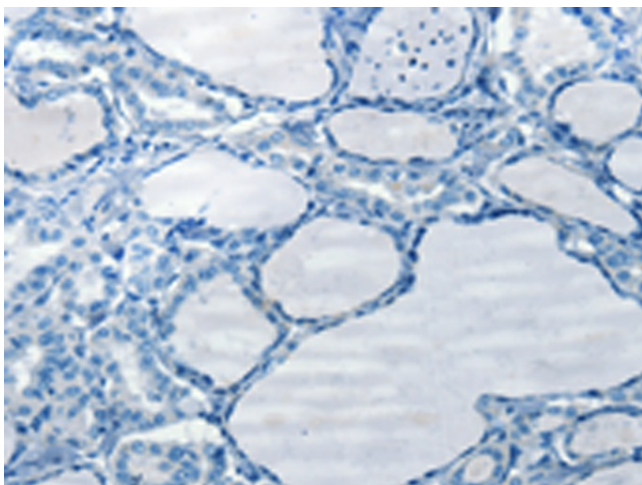
Druggable Genome, Secreted Protein, Transmembrane

Product images:

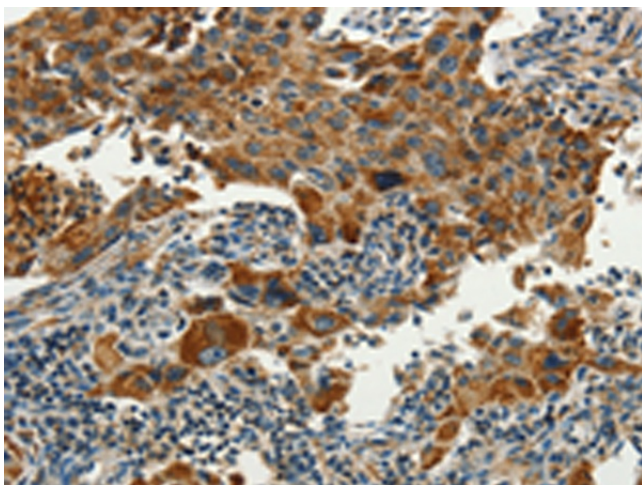
Gel: 8%SDS-PAGE
Lysate: 40 µg
Lane 1-4: 293T cells
231 cells
U937 cells
Raji cells
Primary antibody: TA350932 (SERPINA9 Antibody)
at dilution 1/350
Secondary antibody: Goat anti rabbit IgG at
1/8000 dilution
Exposure time: 10 seconds



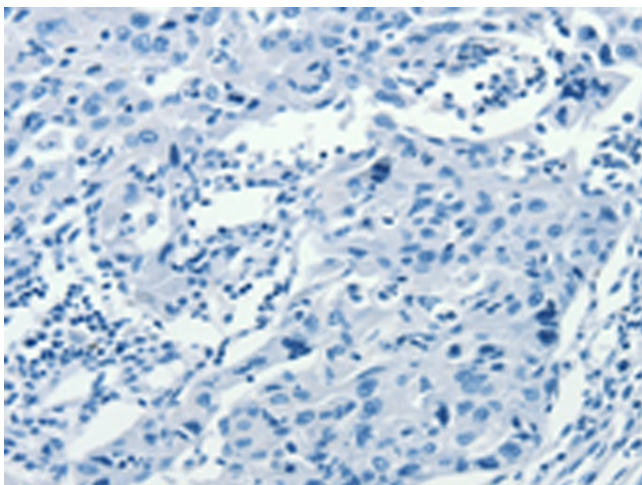
Immunohistochemistry of paraffin-embedded
Human thyroid cancer tissue using TA350932
(SERPINA9 Antibody) at dilution 1/60 (Original
magnification: ×200)



Immunohistochemistry of paraffin-embedded Human thyroid cancer tissue using TA350932 (SERPINA9 Antibody) at dilution 1/60, treated with synthetic peptide. (Original magnification: ×200)



Immunohistochemistry of paraffin-embedded Human lung cancer tissue using TA350932 (SERPINA9 Antibody) at dilution 1/60 (Original magnification: ×200)



Immunohistochemistry of paraffin-embedded Human lung cancer tissue using TA350932 (SERPINA9 Antibody) at dilution 1/60, treated with synthetic peptide. (Original magnification: ×200)