

Product datasheet for **TA350930**

GAPDHS Rabbit Polyclonal Antibody

Product data:

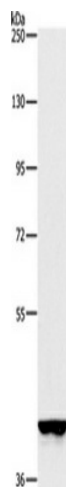
Product Type:	Primary Antibodies
Applications:	WB
Recommended Dilution:	ELISA: 1000-2000, WB: 200-1000
Reactivity:	Human
Host:	Rabbit
Isotype:	IgG
Clonality:	Polyclonal
Immunogen:	Synthetic peptide of human GAPDHS
Formulation:	pH7.4 PBS, 0.05% NaN ₃ , 40% Glycerol
Concentration:	lot specific
Purification:	Antigen affinity purification
Conjugation:	Unconjugated
Storage:	Store at -20°C as received.
Stability:	Stable for 12 months from date of receipt.
Predicted Protein Size:	45 kDa
Gene Name:	glyceraldehyde-3-phosphate dehydrogenase, spermatogenic
Database Link:	NP_055179 Entrez Gene 26330 Human O14556
Background:	This gene encodes a protein belonging to the glyceraldehyde-3-phosphate dehydrogenase family of enzymes that play an important role in carbohydrate metabolism. Like its somatic cell counterpart, this sperm-specific enzyme functions in a nicotinamide adenine dinucleotide-dependent manner to remove hydrogen and add phosphate to glyceraldehyde 3-phosphate to form 1,3-diphosphoglycerate. During spermiogenesis, this enzyme may play an important role in regulating the switch between different energy-producing pathways, and it is required for sperm motility and male fertility.
Synonyms:	GAPD2; GAPDH-2; GAPDS; HEL-S-278; HSD-35



[View online »](#)

Protein Families: Druggable Genome

Product images:



Gel: 6%SDS-PAGE, Lysate: 40 ug, Lane: A549 cells,
Primary antibody: (GAPDHS Antibody) at dilution
1/375, Secondary antibody: Goat anti rabbit IgG
at 1/8000 dilution, Exposure time: 20 seconds