

Product datasheet for **TA350929**

Thrombospondin 1 (THBS1) Rabbit Polyclonal Antibody

Product data:

Product Type:	Primary Antibodies
Applications:	IHC, WB
Recommended Dilution:	WB: 200-1000 WB positive control: A431 and Huvec cells IHC: 50-200 Positive control: Human thyroid cancer Predicted cell location: Cytoplasm
Reactivity:	Human, Mouse
Host:	Rabbit
Isotype:	IgG
Clonality:	Polyclonal
Immunogen:	Synthetic peptide of human THBS1
Formulation:	pH7.4 PBS, 0.05% NaN ₃ , 40% Glycerol
Concentration:	lot specific
Purification:	Antigen affinity purification
Conjugation:	Unconjugated
Storage:	Store at -20°C as received.
Stability:	Stable for 12 months from date of receipt.
Predicted Protein Size:	129 kDa
Gene Name:	thrombospondin 1
Database Link:	NP_003237 Entrez Gene 21825 Mouse Entrez Gene 7057 Human P07996

Background: The protein encoded by this gene is a subunit of a disulfide-linked homotrimeric protein. This protein is an adhesive glycoprotein that mediates cell-to-cell and cell-to-matrix interactions. This protein can bind to fibrinogen, fibronectin, laminin, type V collagen and integrins alpha-V/beta-1. This protein has been shown to play roles in platelet aggregation, angiogenesis, and tumorigenesis.



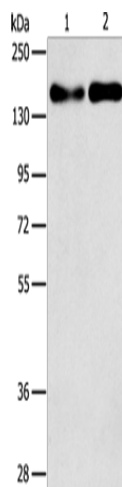
[View online »](#)

Synonyms: THBS; THBS-1; TSP; TSP-1; TSP1

Protein Families: Druggable Genome

Protein Pathways: Bladder cancer, ECM-receptor interaction, Focal adhesion, p53 signaling pathway, TGF-beta signaling pathway

Product images:



Gel: 8%SDS-PAGE

Lysate: 40 μ g

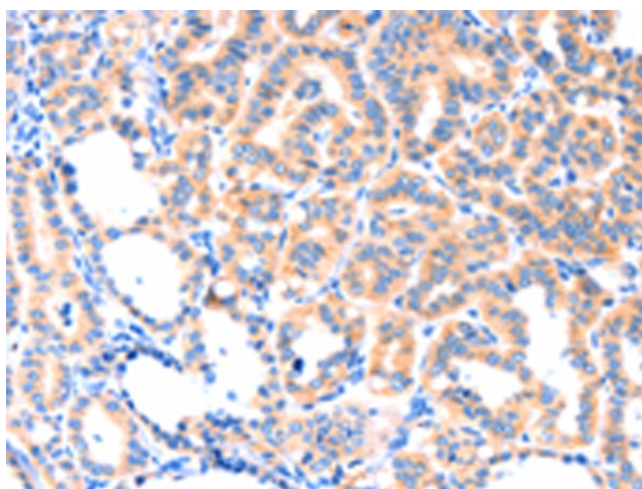
Lane 1-2: A431 cells

Huvec cells

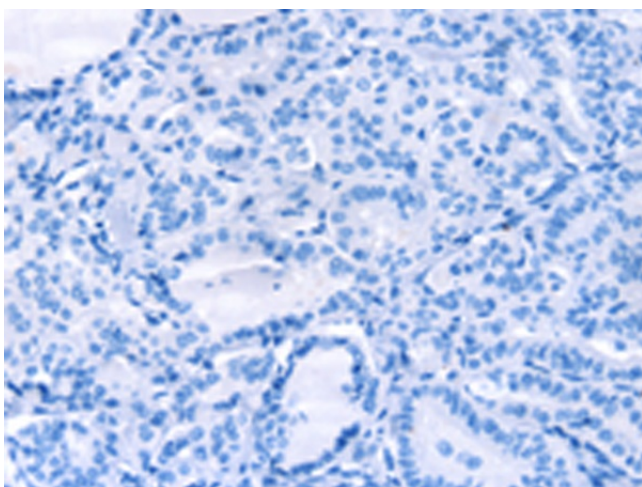
Primary antibody: TA350929 (THBS1 Antibody) at dilution 1/250

Secondary antibody: Goat anti rabbit IgG at 1/8000 dilution

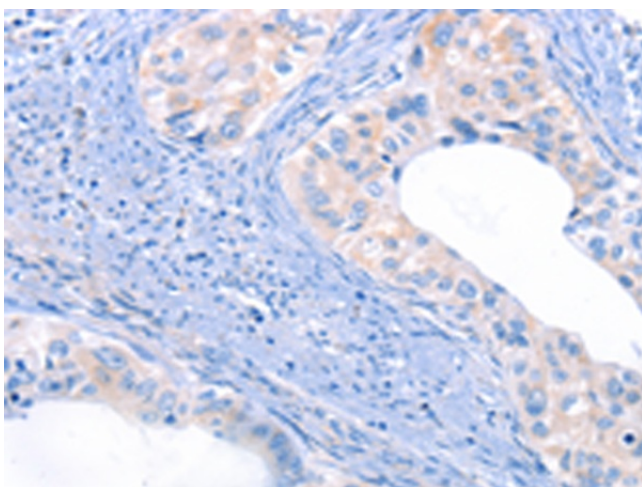
Exposure time: 5 minutes



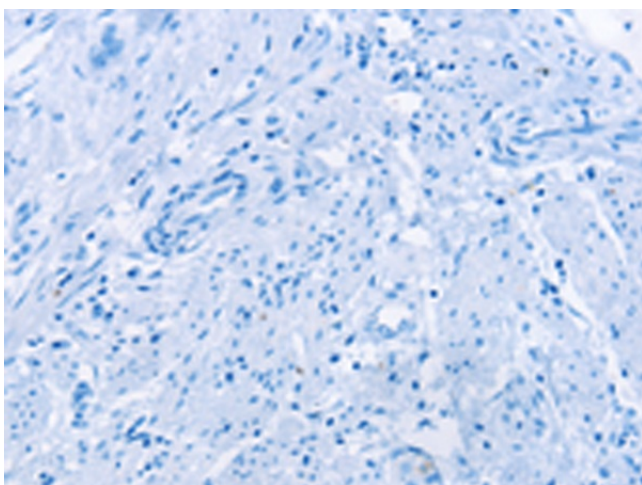
Immunohistochemistry of paraffin-embedded Human thyroid cancer tissue using TA350929 (THBS1 Antibody) at dilution 1/50 (Original magnification: \times 200)



Immunohistochemistry of paraffin-embedded Human thyroid cancer tissue using TA350929 (THBS1 Antibody) at dilution 1/50, treated with synthetic peptide. (Original magnification: ×200)



Immunohistochemistry of paraffin-embedded Human cervical cancer tissue using TA350929 (THBS1 Antibody) at dilution 1/50 (Original magnification: ×200)



Immunohistochemistry of paraffin-embedded Human cervical cancer tissue using TA350929 (THBS1 Antibody) at dilution 1/50, treated with synthetic peptide. (Original magnification: ×200)