

## Product datasheet for **TA350923S**

### NEK10 Rabbit Polyclonal Antibody

#### Product data:

**Product Type:** Primary Antibodies  
**Applications:** IHC  
**Recommended Dilution:** IHC: 25-100  
 Positive control: Human gastric cancer  
 Predicted cell location: Luminal membranous

**Reactivity:** Human

**Host:** Rabbit

**Isotype:** IgG

**Clonality:** Polyclonal

**Immunogen:** Synthetic peptide of human NEK10

**Formulation:** pH7.4 PBS, 0.05% NaN<sub>3</sub>, 40% Glycerol

**Purification:** Antigen affinity purification

**Conjugation:** Unconjugated

**Storage:** Store at -20°C as received.

**Stability:** Stable for 12 months from date of receipt.

**Gene Name:** NIMA related kinase 10

**Database Link:** [NP\\_689747](#)  
[Entrez Gene 152110 Human](#)  
[Q6ZWH5](#)

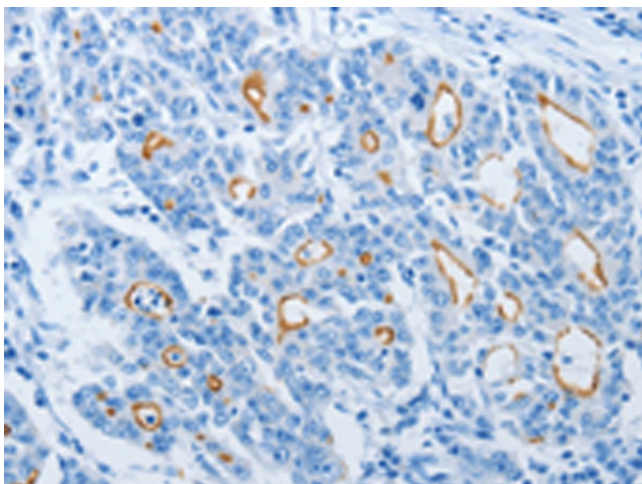
**Background:** Nek10 (NIMA (never in mitosis gene a)-related kinase 10) is a 712 amino acid protein belonging to the NIMA subfamily of kinases and functions as a magnesium-dependent serine/threonine protein kinase. Kinases of the NIMA subfamily are typically involved in genotoxic stress response and DNA replication. Nek10 is expressed in brain and may contain a 14-3-3 interaction motif in its C-terminus. The gene encoding Nek10 has been localized to a region on chromosome 3 that may contribute to vulnerability to addictions. Due to alternative splicing events, three isoforms exist for Nek10.

**Synonyms:** FLJ32685

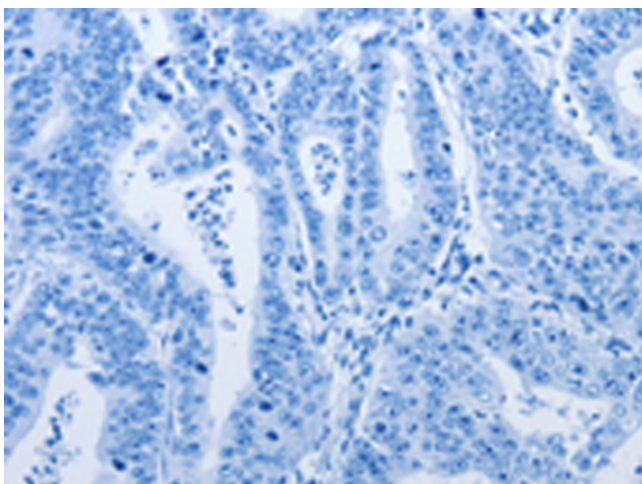
**Protein Families:** Druggable Genome, Protein Kinase



[View online »](#)

**Product images:**

Immunohistochemistry of paraffin-embedded Human gastric cancer tissue using [TA350923] (NEK10 Antibody) at dilution 1/20 (Original magnification: ×200)



Immunohistochemistry of paraffin-embedded Human gastric cancer tissue using [TA350923] (NEK10 Antibody) at dilution 1/20, treated with synthetic peptide. (Original magnification: ×200)