

Product datasheet for **TA350916**

PI 3 Kinase regulatory subunit 4 (PIK3R4) Rabbit Polyclonal Antibody

Product data:

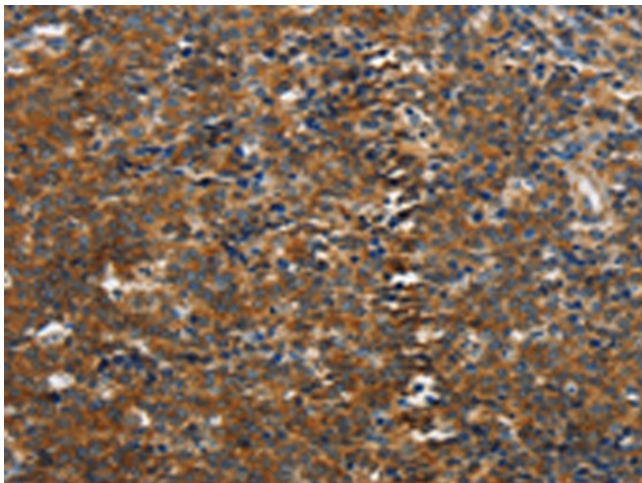
Product Type:	Primary Antibodies
Applications:	IHC
Recommended Dilution:	IHC: 100-300 Positive control: Human lymphoma Predicted cell location: Cytoplasm
Reactivity:	Human, Mouse, Rat
Host:	Rabbit
Isotype:	IgG
Clonality:	Polyclonal
Immunogen:	Synthetic peptide of human PIK3R4
Formulation:	pH7.4 PBS, 0.05% NaN ₃ , 40% GlycerolIn
Concentration:	lot specific
Purification:	Antigen affinity purification
Conjugation:	Unconjugated
Storage:	Store at -20°C as received.
Stability:	Stable for 12 months from date of receipt.
Gene Name:	phosphoinositide-3-kinase regulatory subunit 4
Database Link:	NP_055417 Entrez Gene 75669 MouseEntrez Gene 363131 RatEntrez Gene 30849 Human Q99570
Background:	Phosphoinositide 3-kinase regulatory subunit 4, also known as PI3-kinase regulatory subunit 4 or PI3-kinase p150 subunit or phosphoinositide 3-kinase adaptor protein, or VPS15 is an enzyme that in humans is encoded by the PIK3R4 gene. The PI3-kinases regulate cellular signaling networks that are involved in processes linked to the survival, growth, proliferation, metabolism and specialized differentiated functions of cells. The subversion of this network is common in cancer and has also been linked to disorders of inflammation.
Synonyms:	p150; VPS15
Protein Families:	Druggable Genome, Protein Kinase



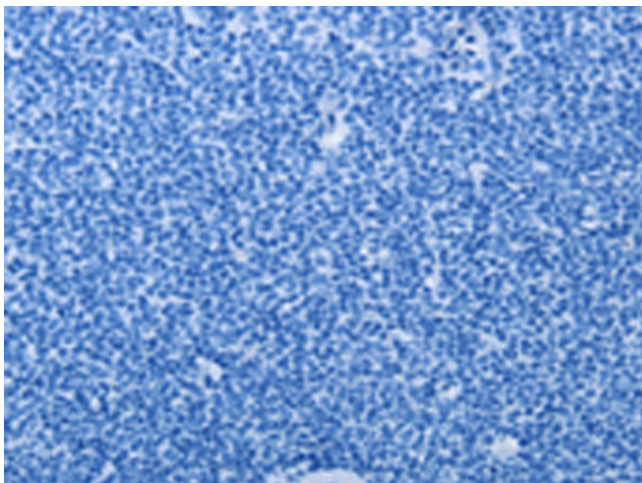
[View online »](#)

Protein Pathways: Regulation of autophagy

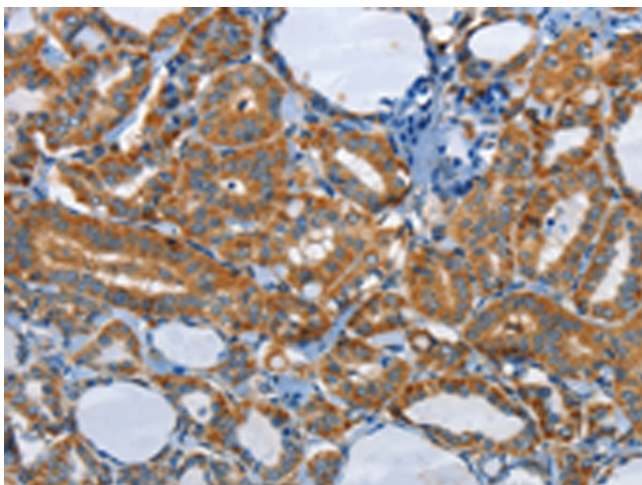
Product images:



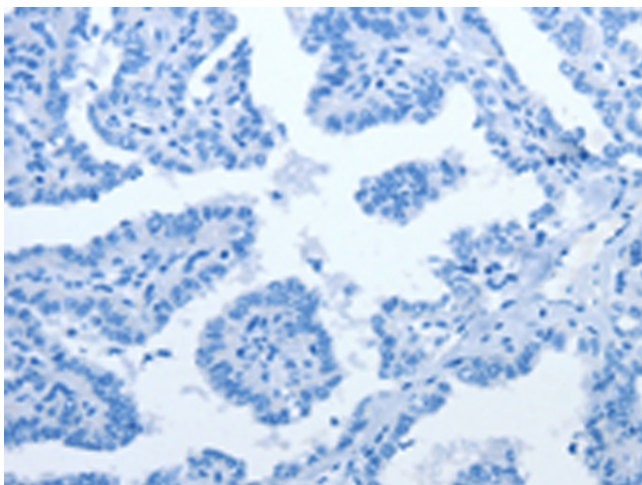
Immunohistochemistry of paraffin-embedded Human lymphoma tissue using TA350916 (PIK3R4 Antibody) at dilution 1/85 (Original magnification: $\times 200$)



Immunohistochemistry of paraffin-embedded Human lymphoma tissue using TA350916 (PIK3R4 Antibody) at dilution 1/85, treated with synthetic peptide. (Original magnification: $\times 200$)



Immunohistochemistry of paraffin-embedded Human thyroid cancer tissue using TA350916 (PIK3R4 Antibody) at dilution 1/85 (Original magnification: $\times 200$)



Immunohistochemistry of paraffin-embedded Human thyroid cancer tissue using TA350916 (PIK3R4 Antibody) at dilution 1/85, treated with synthetic peptide. (Original magnification: $\times 200$)