

## Product datasheet for **TA350913**

### Eph receptor A7 (EPHA7) Rabbit Polyclonal Antibody

#### Product data:

|                       |  |
|-----------------------|--|
| Product Type:         | Primary Antibodies   |
| Applications:         | IHC  |
| Recommended Dilution: | IHC: 25-100<br>Positive control: Human prostate cancer<br>Predicted cell location: Cytoplasm   |
| Reactivity:           | Human, Mouse, Rat  |
| Host:                 | Rabbit   |
| Isotype:              | IgG  |
| Clonality:            | Polyclonal   |
| Immunogen:            | Synthetic peptide of human EPHA7   |
| Formulation:          | pH7.4 PBS, 0.05% NaN <sub>3</sub> , 40% Glycerol   |
| Concentration:        | lot specific   |
| Purification:         | Antigen affinity purification  |
| Conjugation:          | Unconjugated   |
| Storage:              | Store at -20°C as received.  |
| Stability:            | Stable for 12 months from date of receipt.   |
| Gene Name:            | EPH receptor A7  |
| Database Link:        | <a href="#">NP_004431</a><br><a href="#">Entrez Gene 13841 Mouse</a> <a href="#">Entrez Gene 171287 Rat</a> <a href="#">Entrez Gene 2045 Human</a><br><a href="#">Q15375</a> |

**Background:** This gene belongs to the ephrin receptor subfamily of the protein-tyrosine kinase family. EPH and EPH-related receptors have been implicated in mediating developmental events, particularly in the nervous system. Receptors in the EPH subfamily typically have a single kinase domain and an extracellular region containing a Cys-rich domain and 2 fibronectin type III repeats. The ephrin receptors are divided into 2 groups based on the similarity of their extracellular domain sequences and their affinities for binding ephrin-A and ephrin-B ligands. Increased expression of this gene is associated with multiple forms of carcinoma. Alternative splicing results in multiple transcript variants.



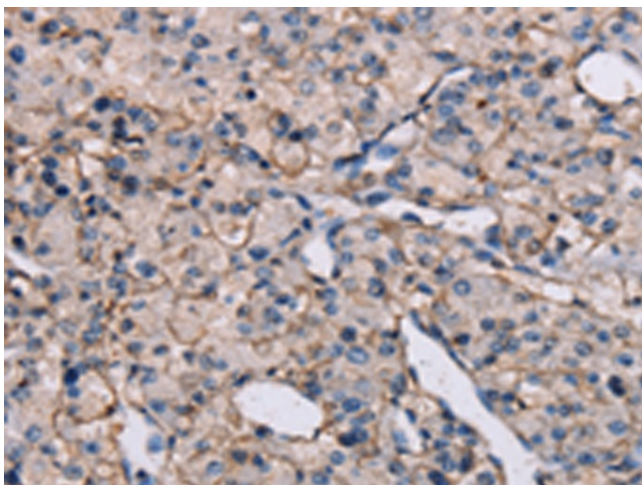
[View online »](#)

**Synonyms:** EHK-3; EHK3; EK11; HEK11

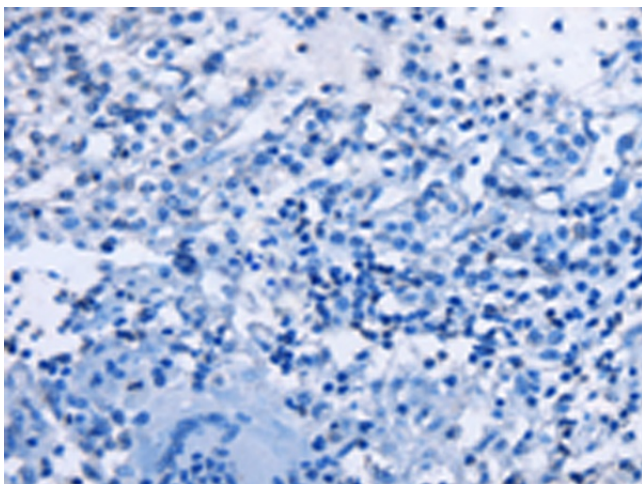
**Protein Families:** Druggable Genome, Protein Kinase, Transmembrane

**Protein Pathways:** Axon guidance

**Product images:**



Immunohistochemistry of paraffin-embedded Human prostate cancer tissue using TA350913 (EPHA7 Antibody) at dilution 1/20 (Original magnification:  $\times 200$ )



Immunohistochemistry of paraffin-embedded Human prostate cancer tissue using TA350913 (EPHA7 Antibody) at dilution 1/20, treated with synthetic peptide. (Original magnification:  $\times 200$ )