

## Product datasheet for **TA350904S**

### PKC beta 1 (PRKCB) Rabbit Polyclonal Antibody

#### Product data:

Product Type:	Primary Antibodies
Applications:	WB
Recommended Dilution:	WB: 200-1000 WB positive control: Human fetal liver and brain malignant glioma tissue
Reactivity:	Human, Mouse, Rat
Host:	Rabbit
Isotype:	IgG
Clonality:	Polyclonal
Immunogen:	Synthetic peptide of human PRKCB
Formulation:	pH7.4 PBS, 0.05% NaN <sub>3</sub> , 40% Glycerol
Purification:	Antigen affinity purification
Conjugation:	Unconjugated
Storage:	Store at -20°C as received.
Stability:	Stable for 12 months from date of receipt.
Predicted Protein Size:	77 kDa
Gene Name:	protein kinase C beta
Database Link:	<a href="#">NP_997700</a> <a href="#">Entrez Gene 18751 Mouse</a> <a href="#">Entrez Gene 25023 Rat</a> <a href="#">Entrez Gene 5579 Human</a> <a href="#">P05771</a>

**Background:** Protein kinase C (PKC) is a family of serine- and threonine-specific protein kinases that can be activated by calcium and second messenger diacylglycerol. PKC family members phosphorylate a wide variety of protein targets and are known to be involved in diverse cellular signaling pathways. PKC family members also serve as major receptors for phorbol esters, a class of tumor promoters. Each member of the PKC family has a specific expression profile and is believed to play a distinct role in cells. The protein encoded by this gene is one of the PKC family members. This protein kinase has been reported to be involved in many different cellular functions, such as B cell activation, apoptosis induction, endothelial cell proliferation, and intestinal sugar absorption.



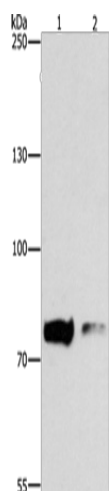
[View online »](#)

**Synonyms:** PKC-beta; PKCB; PRKCB1; PRKCB2

**Protein Families:** Druggable Genome, Protein Kinase

**Protein Pathways:** B cell receptor signaling pathway, Calcium signaling pathway, Chemokine signaling pathway, ErbB signaling pathway, Fc epsilon RI signaling pathway, Fc gamma R-mediated phagocytosis, Focal adhesion, Gap junction, Glioma, GnRH signaling pathway, Leukocyte transendothelial migration, Long-term depression, Long-term potentiation, MAPK signaling pathway, Melanogenesis, Natural killer cell mediated cytotoxicity, Non-small cell lung cancer, Pathways in cancer, Phosphatidylinositol signaling system, Tight junction, Vascular smooth muscle contraction, VEGF signaling pathway, Vibrio cholerae infection, Wnt signaling pathway

### Product images:



Gel: 6%SDS-PAGE  
Lysate: 40 µg  
Lane 1-2: Human fetal liver tissue  
Human brain malignant glioma tissue  
Primary antibody: [TA350904] (PRKCB Antibody)  
at dilution 1/200  
Secondary antibody: Goat anti rabbit IgG at  
1/8000 dilution  
Exposure time: 2 minutes