

## Product datasheet for **TA350902**

### Aurora C (AURKC) Rabbit Polyclonal Antibody

#### Product data:

|                         |   |
|-------------------------|---|
| Product Type:           | Primary Antibodies  |
| Applications:           | IHC, WB   |
| Recommended Dilution:   | WB: 200-1000<br>WB positive control: Mouse testis tissue and hela cells, human liver cancer and A375 cells, 293T cells<br>IHC: 15-50<br>Positive control: Human brain<br>Predicted cell location: Cytoplasm |
| Reactivity:             | Human, Mouse  |
| Host:                   | Rabbit  |
| Isotype:                | IgG   |
| Clonality:              | Polyclonal  |
| Immunogen:              | Synthetic peptide of human AURKC  |
| Formulation:            | pH7.4 PBS, 0.05% NaN <sub>3</sub> , 40% Glycerol  |
| Concentration:          | lot specific  |
| Purification:           | Antigen affinity purification   |
| Conjugation:            | Unconjugated  |
| Storage:                | Store at -20°C as received.   |
| Stability:              | Stable for 12 months from date of receipt.  |
| Predicted Protein Size: | 36 kDa  |
| Gene Name:              | aurora kinase C   |
| Database Link:          | <a href="#">NP_003151</a><br><a href="#">Entrez Gene 20871 Mouse</a> <a href="#">Entrez Gene 6795 Human</a><br><a href="#">Q9UQB9</a>   |



[View online »](#)

**Background:**

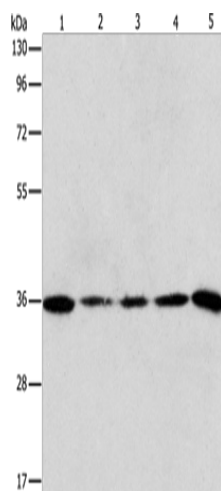
This gene encodes a member of the Aurora subfamily of serine/threonine protein kinases. The encoded protein is a chromosomal passenger protein that forms complexes with Aurora-B and inner centromere proteins and may play a role in organizing microtubules in relation to centrosome/spindle function during mitosis. This gene is overexpressed in several cancer cell lines, suggesting an involvement in oncogenic signal transduction. Alternative splicing results in multiple transcript variants.

**Synonyms:**

AIE2; AIK3; ARK3; AurC; aurora-C; HEL-S-90; SPGF5; STK13

**Protein Families:**

Druggable Genome, Protein Kinase

**Product images:**

Gel: 10%SDS-PAGE

Lysate: 40  $\mu$ g

Lane 1-5: Mouse testis tissue

hela cells

human liver cancer tissue

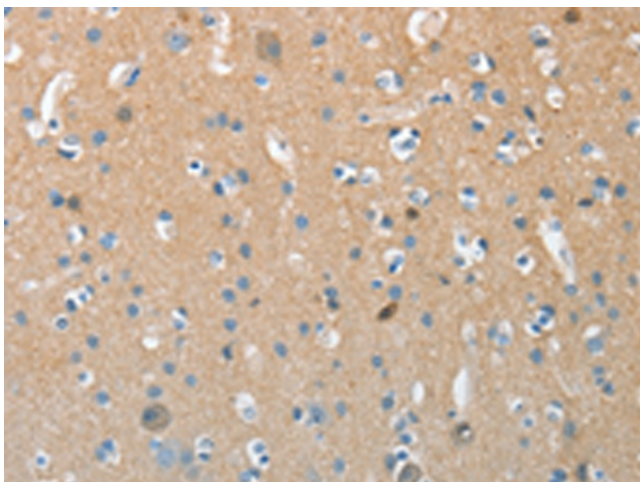
A375 cells

293T cells

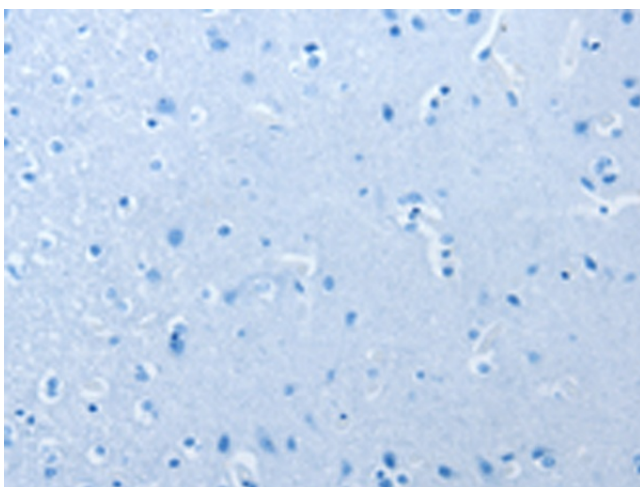
Primary antibody: TA350902 (AURKC Antibody) at dilution 1/150

Secondary antibody: Goat anti rabbit IgG at 1/8000 dilution

Exposure time: 1 minute



Immunohistochemistry of paraffin-embedded Human brain tissue using TA350902 (AURKC Antibody) at dilution 1/15 (Original magnification:  $\times$ 200)



Immunohistochemistry of paraffin-embedded Human brain tissue using TA350902 (AURKC Antibody) at dilution 1/15, treated with synthetic peptide. (Original magnification: ×200)