

Product datasheet for **TA350899S**

Calcipressin 1 (RCAN1) Rabbit Polyclonal Antibody

Product data:

Product Type:	Primary Antibodies
Applications:	IHC, WB
Recommended Dilution:	WB: 500-2000 WB positive control: Mouse heart and brain tissue IHC: 50-200 Positive control: Human liver cancer Predicted cell location: Cytoplasm
Reactivity:	Human, Mouse
Host:	Rabbit
Isotype:	IgG
Clonality:	Polyclonal
Immunogen:	Synthetic peptide of human RCAN1
Formulation:	pH7.4 PBS, 0.05% NaN ₃ , 40% Glycerol
Purification:	Antigen affinity purification
Conjugation:	Unconjugated
Storage:	Store at -20°C as received.
Stability:	Stable for 12 months from date of receipt.
Predicted Protein Size:	28 kDa
Gene Name:	regulator of calcineurin 1
Database Link:	NP_981963 Entrez Gene 54720 Mouse Entrez Gene 1827 Human P53805

Background: The protein encoded by this gene interacts with calcineurin A and inhibits calcineurin-dependent signaling pathways, possibly affecting central nervous system development. This gene is located in the minimal candidate region for the Down syndrome phenotype, and is overexpressed in the brain of Down syndrome fetuses. Chronic overexpression of this gene may lead to neurofibrillary tangles such as those associated with Alzheimer disease. Three transcript variants encoding three different isoforms have been found for this gene.

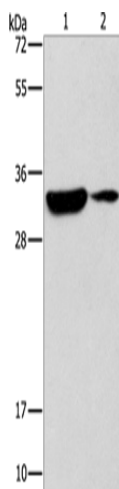


[View online »](#)

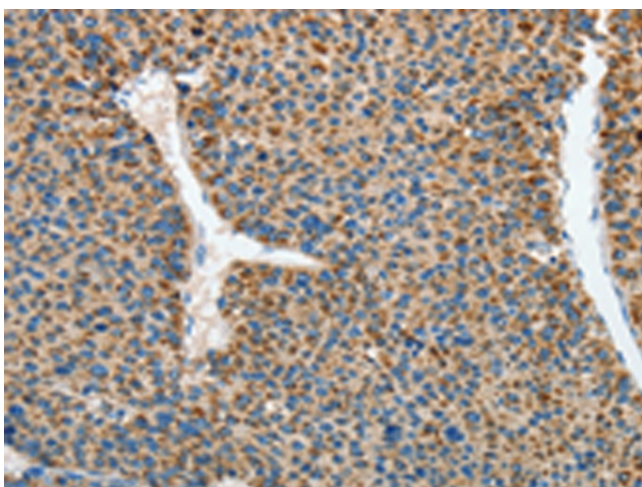
Synonyms: ADAPT78; CSP1; DSC1; DSCR1; MCIP1; RCN1

Protein Families: Transcription Factors

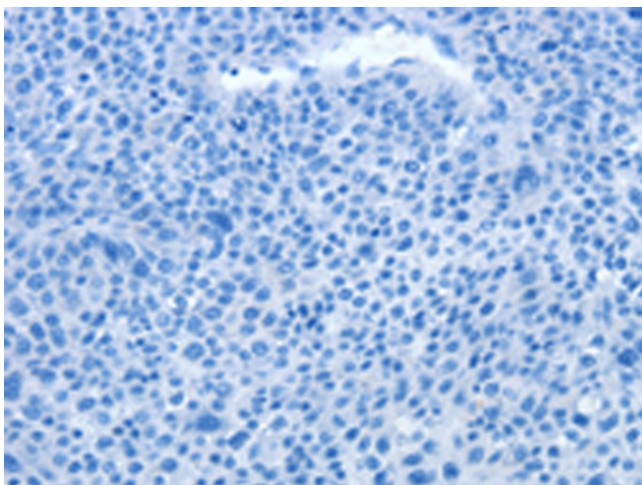
Product images:



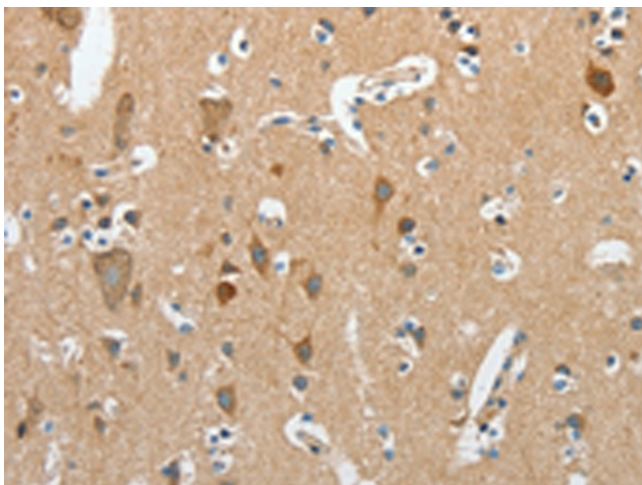
Gel: 12%SDS-PAGE
Lysate: 40 µg
Lane 1-2: Mouse heart tissue
Mouse brain tissue
Primary antibody: [TA350899] (RCAN1 Antibody)
at dilution 1/500
Secondary antibody: Goat anti rabbit IgG at
1/8000 dilution
Exposure time: 1 minute



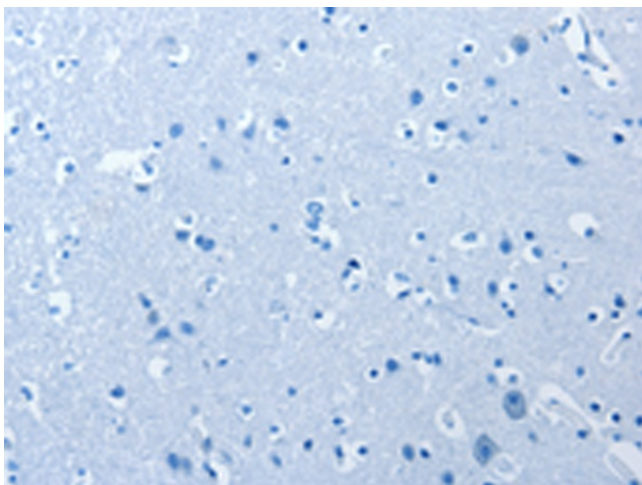
Immunohistochemistry of paraffin-embedded
Human liver cancer tissue using [TA350899]
(RCAN1 Antibody) at dilution 1/45 (Original
magnification: ×200)



Immunohistochemistry of paraffin-embedded Human liver cancer tissue using [TA350899] (RCAN1 Antibody) at dilution 1/45, treated with synthetic peptide. (Original magnification: ×200)



Immunohistochemistry of paraffin-embedded Human brain tissue using [TA350899] (RCAN1 Antibody) at dilution 1/45 (Original magnification: ×200)



Immunohistochemistry of paraffin-embedded Human brain tissue using [TA350899] (RCAN1 Antibody) at dilution 1/45, treated with synthetic peptide. (Original magnification: ×200)