

Product datasheet for **TA350899**

Calcipressin 1 (RCAN1) Rabbit Polyclonal Antibody

Product data:

Product Type:	Primary Antibodies
Applications:	IHC, WB
Recommended Dilution:	WB: 500-2000 WB positive control: Mouse heart and brain tissue IHC: 50-200 Positive control: Human liver cancer Predicted cell location: Cytoplasm
Reactivity:	Human, Mouse
Host:	Rabbit
Isotype:	IgG
Clonality:	Polyclonal
Immunogen:	Synthetic peptide of human RCAN1
Formulation:	pH7.4 PBS, 0.05% NaN ₃ , 40% Glycerol
Concentration:	lot specific
Purification:	Antigen affinity purification
Conjugation:	Unconjugated
Storage:	Store at -20°C as received.
Stability:	Stable for 12 months from date of receipt.
Predicted Protein Size:	28 kDa
Gene Name:	regulator of calcineurin 1
Database Link:	NP_981963 Entrez Gene 54720 Mouse Entrez Gene 1827 Human P53805



[View online »](#)

Background:

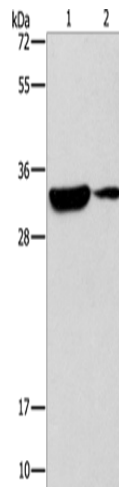
The protein encoded by this gene interacts with calcineurin A and inhibits calcineurin-dependent signaling pathways, possibly affecting central nervous system development. This gene is located in the minimal candidate region for the Down syndrome phenotype, and is overexpressed in the brain of Down syndrome fetuses. Chronic overexpression of this gene may lead to neurofibrillary tangles such as those associated with Alzheimer disease. Three transcript variants encoding three different isoforms have been found for this gene.

Synonyms:

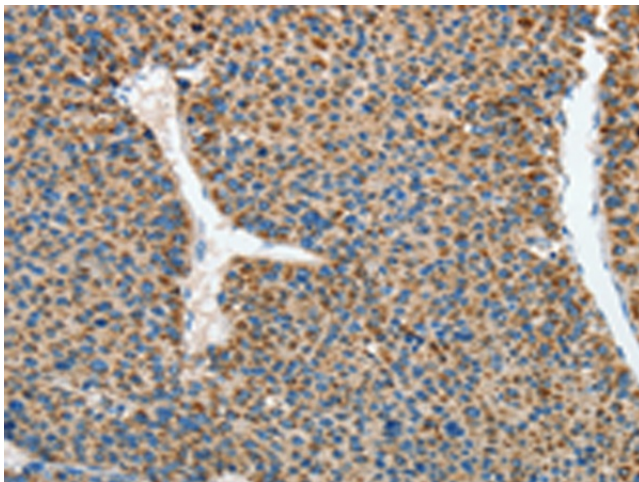
ADAPT78; CSP1; DSC1; DSCR1; MCIP1; RCN1

Protein Families:

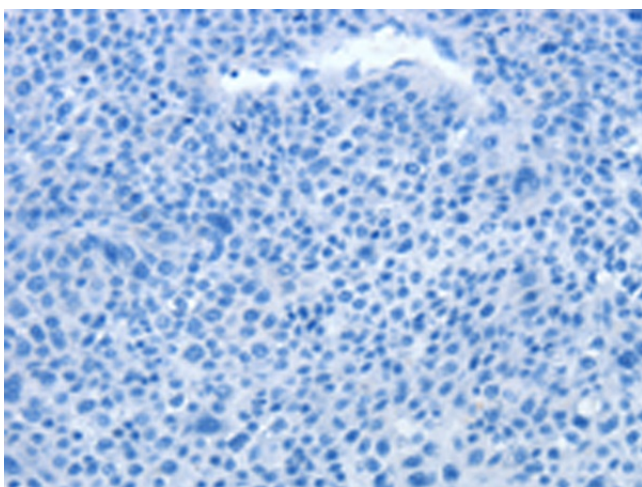
Transcription Factors

Product images:


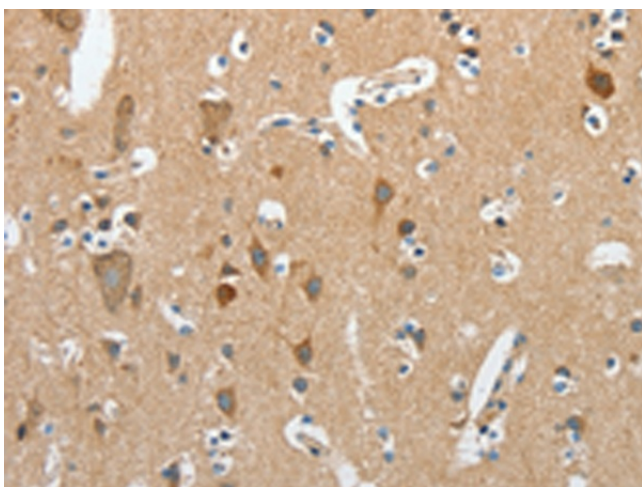
Gel: 12%SDS-PAGE
 Lysate: 40 µg
 Lane 1-2: Mouse heart tissue
 Mouse brain tissue
 Primary antibody: TA350899 (RCAN1 Antibody) at dilution 1/500
 Secondary antibody: Goat anti rabbit IgG at 1/8000 dilution
 Exposure time: 1 minute



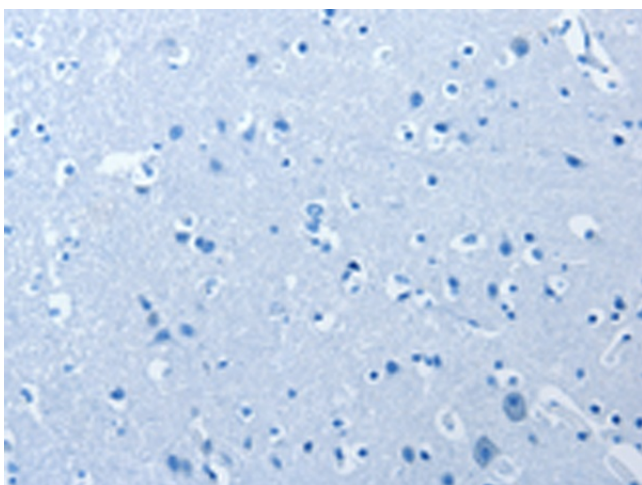
Immunohistochemistry of paraffin-embedded Human liver cancer tissue using TA350899 (RCAN1 Antibody) at dilution 1/45 (Original magnification: ×200)



Immunohistochemistry of paraffin-embedded Human liver cancer tissue using TA350899 (RCAN1 Antibody) at dilution 1/45, treated with synthetic peptide. (Original magnification: ×200)



Immunohistochemistry of paraffin-embedded Human brain tissue using TA350899 (RCAN1 Antibody) at dilution 1/45 (Original magnification: ×200)



Immunohistochemistry of paraffin-embedded Human brain tissue using TA350899 (RCAN1 Antibody) at dilution 1/45, treated with synthetic peptide. (Original magnification: ×200)