

## Product datasheet for **TA350898**

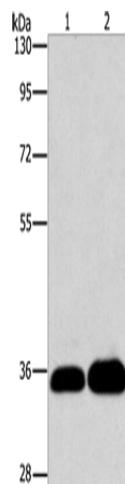
### LIN28B Rabbit Polyclonal Antibody

#### Product data:

Product Type:	Primary Antibodies
Applications:	WB
Recommended Dilution:	WB: 500-2000 WB positive control: K562 and 293T cells
Reactivity:	Human
Host:	Rabbit
Isotype:	IgG
Clonality:	Polyclonal
Immunogen:	Synthetic peptide of human LIN28B
Formulation:	pH7.4 PBS, 0.05% NaN <sub>3</sub> , 40% Glycerol
Concentration:	lot specific
Purification:	Antigen affinity purification
Conjugation:	Unconjugated
Storage:	Store at -20°C as received.
Stability:	Stable for 12 months from date of receipt.
Predicted Protein Size:	27 kDa
Gene Name:	lin-28 homolog B
Database Link:	<a href="#">NP_001004317</a> <a href="#">Entrez Gene 389421 Human</a> <a href="#">Q6ZN17</a>
Background:	The protein encoded by this gene belongs to the lin-28 family, which is characterized by the presence of a cold-shock domain and a pair of CCHC zinc finger domains. This gene is highly expressed in testis, fetal liver, placenta, and in primary human tumors and cancer cell lines. It is negatively regulated by microRNAs that target sites in the 3' UTR, and overexpression of this gene in primary tumors is linked to the repression of let-7 family of microRNAs and derepression of let-7 targets, which facilitates cellular transformation. [provided by RefSeq, Jun 2012]
Synonyms:	CSDD2



[View online »](#)

**Product images:**

Gel: 10%SDS-PAGE

Lysate: 40  $\mu$ g

Lane 1-2: K562 cells  
293T cells

Primary antibody: TA350898 (LIN28B Antibody) at  
dilution 1/550

Secondary antibody: Goat anti rabbit IgG at  
1/8000 dilution

Exposure time: 1 minute