

Product datasheet for **TA350896**

HTRA3 Rabbit Polyclonal Antibody

Product data:

Product Type:	Primary Antibodies
Applications:	IHC
Recommended Dilution:	IHC: 50-200 Positive control: Human liver cancer Predicted cell location: Cytoplasm
Reactivity:	Human, Mouse, Rat
Host:	Rabbit
Isotype:	IgG
Clonality:	Polyclonal
Immunogen:	Synthetic peptide of human HTRA3
Formulation:	pH7.4 PBS, 0.05% NaN ₃ , 40% Glycerol
Concentration:	lot specific
Purification:	Antigen affinity purification
Conjugation:	Unconjugated
Storage:	Store at -20°C as received.
Stability:	Stable for 12 months from date of receipt.
Gene Name:	HtrA serine peptidase 3
Database Link:	NP_444272 Entrez Gene 78558 Mouse Entrez Gene 360959 Rat Entrez Gene 94031 Human P83110



[View online »](#)

Background:

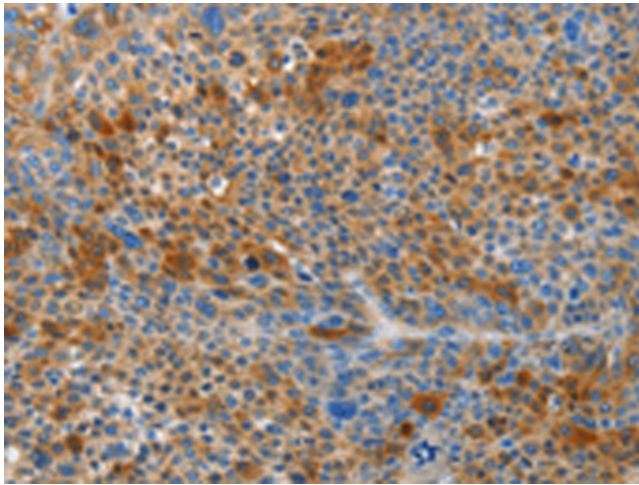
HtrA3, also known as PRSP (pregnancy-related serine protease), is a 453 amino acid secreted protein that contains one PDZ domain, one Kazal-like domain and one IGFBP N-terminal domain. Widely expressed with particularly high expression in ovary, heart, placenta and bladder, HtrA3 functions as a probable serine protease that is thought to play an important role in placental development. HtrA3 is downregulated in ovarian tumors, suggesting an alternative role in tumor suppression. HtrA3 exists as two alternatively spliced isoforms, designated short and long. The gene encoding HtrA3 maps to human chromosome 4, which encodes nearly 6% of the human genome and has the largest gene deserts (regions of the genome with no protein encoding genes) of all of the human chromosomes.

Synonyms:

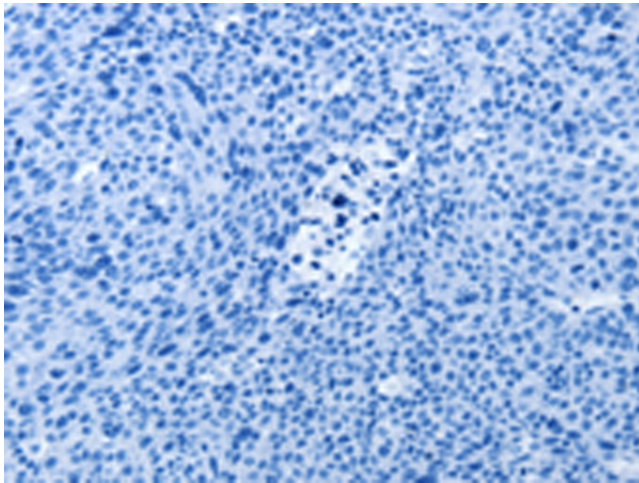
Prsp; Tasp

Protein Families:

Druggable Genome, Protease, Secreted Protein

Product images:

Immunohistochemistry of paraffin-embedded Human liver cancer tissue using TA350896 (HTRA3 Antibody) at dilution 1/45 (Original magnification: ×200)



Immunohistochemistry of paraffin-embedded Human liver cancer tissue using TA350896 (HTRA3 Antibody) at dilution 1/45, treated with synthetic peptide. (Original magnification: ×200)