

## Product datasheet for **TA350895**

### PIAS2 Rabbit Polyclonal Antibody

#### Product data:

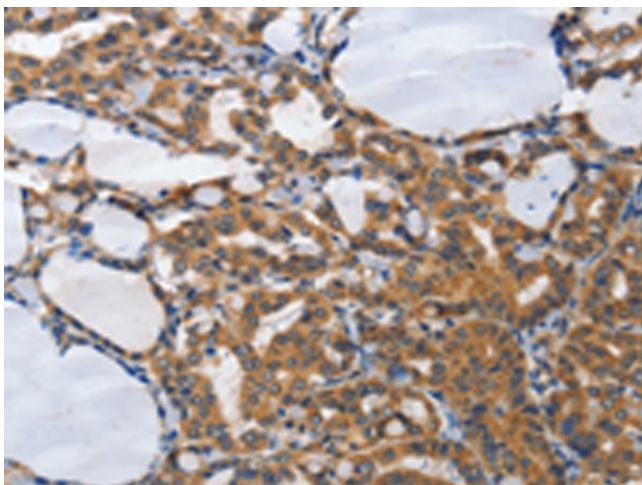
Product Type:	Primary Antibodies
Applications:	IHC
Recommended Dilution:	IHC: 50-200 Positive control: Human thyroid cancer Predicted cell location: Cytoplasm
Reactivity:	Human, Mouse
Host:	Rabbit
Isotype:	IgG
Clonality:	Polyclonal
Immunogen:	Synthetic peptide of human PIAS2
Formulation:	pH7.4 PBS, 0.05% NaN <sub>3</sub> , 40% Glycerol
Concentration:	lot specific
Purification:	Antigen affinity purification
Conjugation:	Unconjugated
Storage:	Store at -20°C as received.
Stability:	Stable for 12 months from date of receipt.
Gene Name:	protein inhibitor of activated STAT 2
Database Link:	<a href="#">NP_004662</a> <a href="#">Entrez Gene 17344 Mouse</a> <a href="#">Entrez Gene 9063 Human</a> <a href="#">O75928</a>

**Background:** This gene encodes a member of the protein inhibitor of activated STAT (PIAS) family. PIAS proteins function as SUMO E3 ligases and play important roles in many cellular processes by mediating the sumoylation of target proteins. Alternatively spliced transcript variants encoding multiple isoforms have been observed for this gene. Isoforms of the encoded protein enhance the sumoylation of specific target proteins including the p53 tumor suppressor protein, c-Jun, and the androgen receptor. A pseudogene of this gene is located on the short arm of chromosome 4. The symbol MIZ1 has also been associated with ZBTB17 which is a different gene located on chromosome 1.

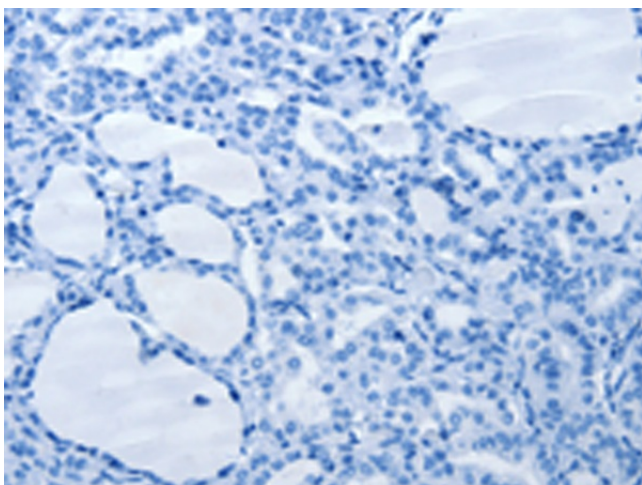


[View online »](#)

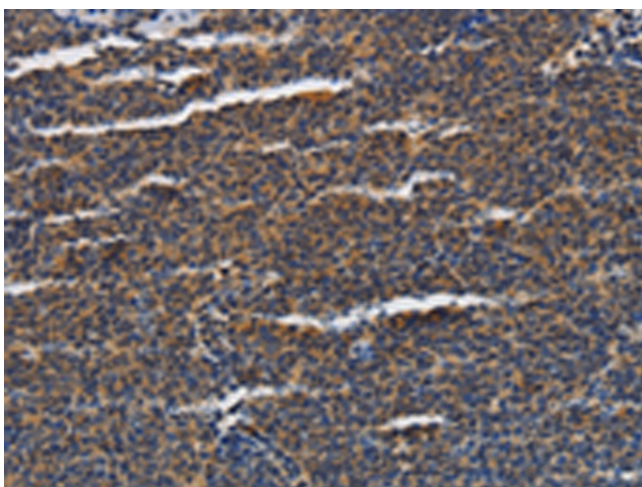
<b>Synonyms:</b>	ARIP3; DIP; MIZ; MIZ1; PIASX; PIASX-ALPHA; PIASX-BETA; SIZ2; ZMIZ4
<b>Protein Families:</b>	Stem cell - Pluripotency, Stem cell relevant signaling - JAK/STAT signaling pathway, Transcription Factors
<b>Protein Pathways:</b>	Jak-STAT signaling pathway, Pathways in cancer, Small cell lung cancer, Ubiquitin mediated proteolysis

**Product images:**

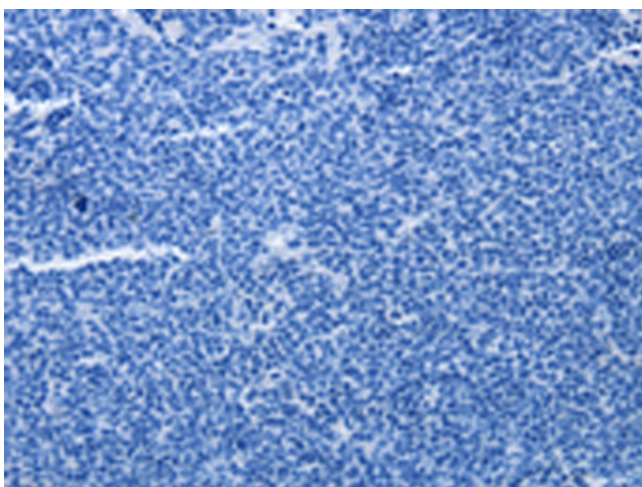
Immunohistochemistry of paraffin-embedded Human thyroid cancer tissue using TA350895 (PIAS2 Antibody) at dilution 1/70 (Original magnification:  $\times 200$ )



Immunohistochemistry of paraffin-embedded Human thyroid cancer tissue using TA350895 (PIAS2 Antibody) at dilution 1/70, treated with synthetic peptide. (Original magnification:  $\times 200$ )



Immunohistochemistry of paraffin-embedded Human lymphoma tissue using TA350895 (PIAS2 Antibody) at dilution 1/70 (Original magnification:  $\times 200$ )



Immunohistochemistry of paraffin-embedded Human lymphoma tissue using TA350895 (PIAS2 Antibody) at dilution 1/70, treated with synthetic peptide. (Original magnification:  $\times 200$ )