

## Product datasheet for **TA350891**

### Nestin (NES) Rabbit Polyclonal Antibody

#### Product data:

Product Type:	Primary Antibodies
Applications:	IHC
Recommended Dilution:	IHC: 25-100 Positive control: Human gastric cancer Predicted cell location: Cytoplasm
Reactivity:	Human
Host:	Rabbit
Isotype:	IgG
Clonality:	Polyclonal
Immunogen:	Synthetic peptide of human NES
Formulation:	pH7.4 PBS, 0.05% NaN <sub>3</sub> , 40% Glycerol
Concentration:	lot specific
Purification:	Antigen affinity purification
Conjugation:	Unconjugated
Storage:	Store at -20°C as received.
Stability:	Stable for 12 months from date of receipt.
Gene Name:	nestin
Database Link:	<a href="#">NP_006608</a> <a href="#">Entrez Gene 10763 Human</a> <a href="#">P48681</a>



[View online »](#)

**Background:**

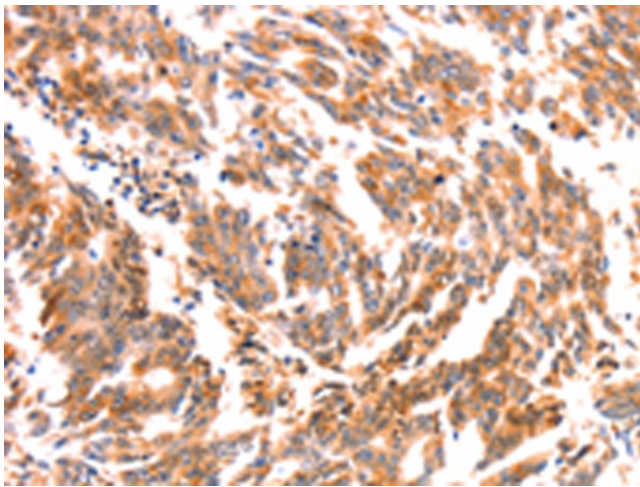
Nestin is a type IV intermediate filament protein expressed by neuroepithelial stem cells and which has been proposed to represent a marker for putative islet stem cells. It is a high molecular weight protein with a terminus greater than 500 residues. Nestins are expressed by several types of cells during development, mostly in dividing cells of the Central Nervous System, Peripheral Nervous System and myogenic tissues. It also represents the progenitor population of neural stem cell origin. The role of nestin in dynamic cells, particularly structural organization of the cell, appears strictly regulated by phosphorylation, especially its integration into heterogeneous intermediate filaments together with vimentin or internexin. Nestin has recently received attention as a marker for detecting newly formed endothelial cells.

**Synonyms:**

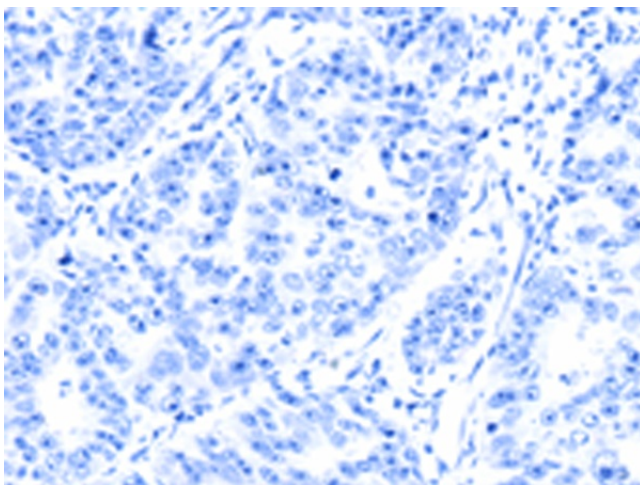
Nbla00170

**Protein Families:**

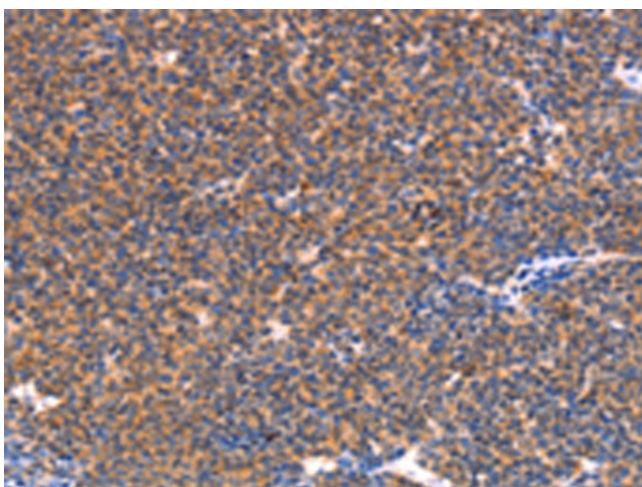
ES Cell Differentiation/IPS

**Product images:**

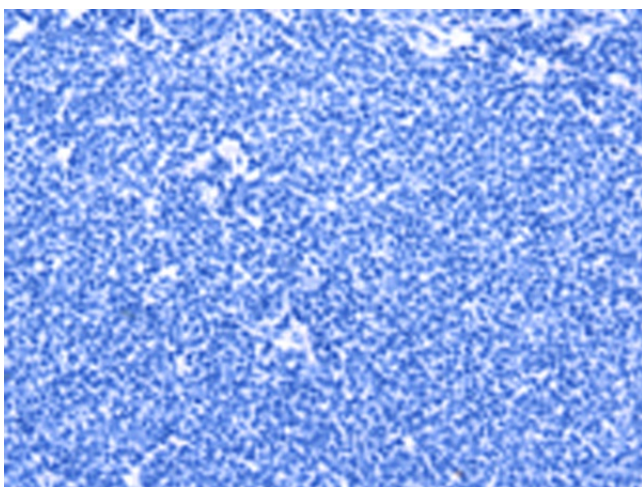
Immunohistochemistry of paraffin-embedded Human gastric cancer tissue using TA350891 (NES Antibody) at dilution 1/30 (Original magnification:  $\times 200$ )



Immunohistochemistry of paraffin-embedded Human gastric cancer tissue using TA350891 (NES Antibody) at dilution 1/30, treated with synthetic peptide. (Original magnification:  $\times 200$ )



Immunohistochemistry of paraffin-embedded Human lymphoma tissue using TA350891 (NES Antibody) at dilution 1/30 (Original magnification: ×200)



Immunohistochemistry of paraffin-embedded Human lymphoma tissue using TA350891 (NES Antibody) at dilution 1/30, treated with synthetic peptide. (Original magnification: ×200)