

## Product datasheet for **TA350889**

### UPF1 Rabbit Polyclonal Antibody

#### Product data:

Product Type:	Primary Antibodies
Applications:	IHC, WB
Recommended Dilution:	WB: 200-1000 WB positive control: Raji cells IHC: 50-200 Positive control: Human liver cancer Predicted cell location: Cytoplasm
Reactivity:	Human, Mouse
Host:	Rabbit
Isotype:	IgG
Clonality:	Polyclonal
Immunogen:	Synthetic peptide of human UPF1
Formulation:	pH7.4 PBS, 0.05% NaN <sub>3</sub> , 40% Glycerol
Concentration:	lot specific
Purification:	Antigen affinity purification
Conjugation:	Unconjugated
Storage:	Store at -20°C as received.
Stability:	Stable for 12 months from date of receipt.
Predicted Protein Size:	124 kDa
Gene Name:	UPF1, RNA helicase and ATPase
Database Link:	<a href="#">NP_002902</a> <a href="#">Entrez Gene 19704 Mouse</a> <a href="#">Entrez Gene 5976 Human</a> <a href="#">Q92900</a>



[View online »](#)

**Background:**

This gene encodes a protein that is part of a post-splicing multiprotein complex involved in both mRNA nuclear export and mRNA surveillance. mRNA surveillance detects exported mRNAs with truncated open reading frames and initiates nonsense-mediated mRNA decay (NMD). When translation ends upstream from the last exon-exon junction, this triggers NMD to degrade mRNAs containing premature stop codons. This protein is located only in the cytoplasm. When translation ends, it interacts with the protein that is a functional homolog of yeast Upf2p to trigger mRNA decapping. Use of multiple polyadenylation sites has been noted for this gene.

**Synonyms:**

HUPF1; NORF1; pNORF1; RENT1; smg-2

**Protein Families:**

Druggable Genome

**Product images:**

Gel: 6%SDS-PAGE

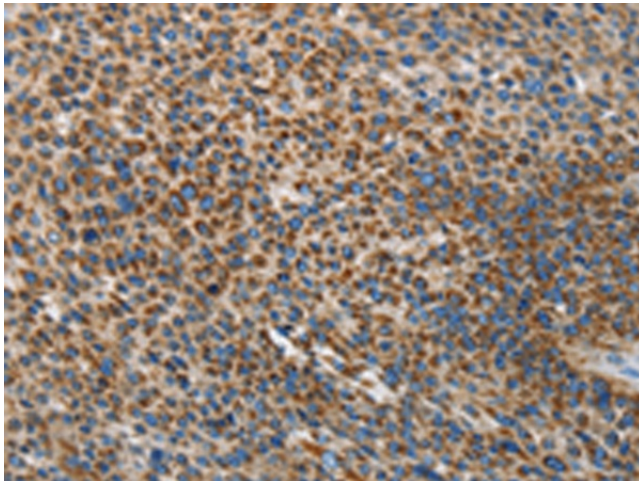
Lysate: 60 µg

Lane: Raji cells

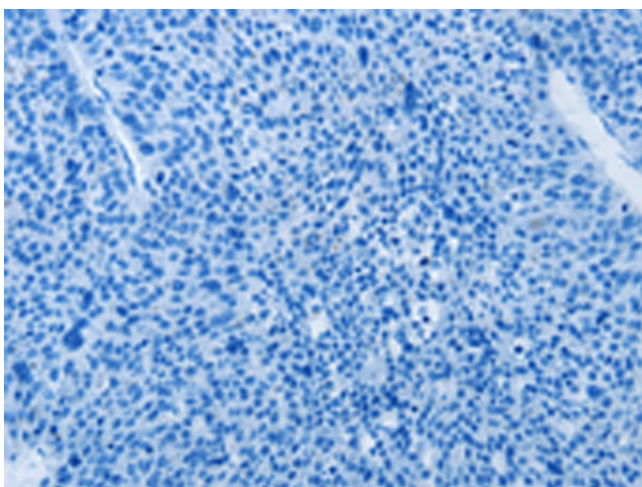
Primary antibody: TA350889 (UPF1 Antibody) at dilution 1/300

Secondary antibody: Goat anti rabbit IgG at 1/8000 dilution

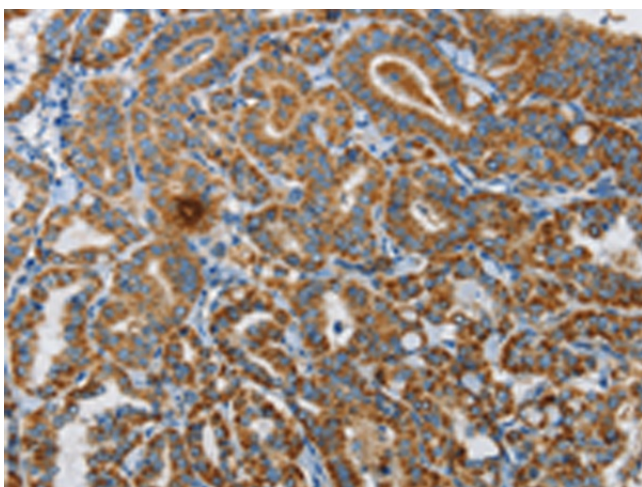
Exposure time: 10 minutes



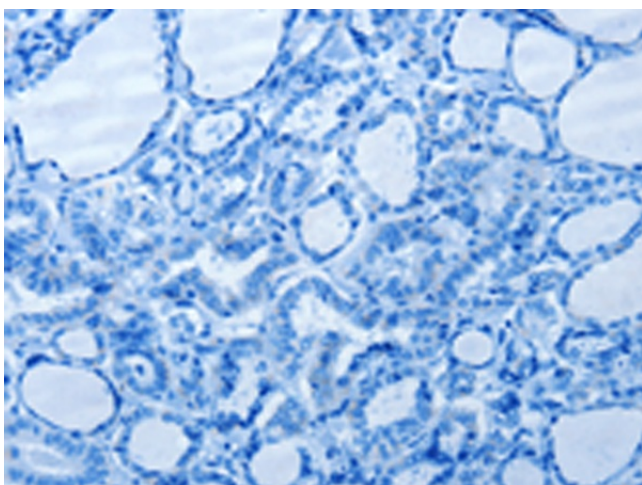
Immunohistochemistry of paraffin-embedded Human liver cancer tissue using TA350889 (UPF1 Antibody) at dilution 1/35 (Original magnification: ×200)



Immunohistochemistry of paraffin-embedded Human liver cancer tissue using TA350889 (UPF1 Antibody) at dilution 1/35, treated with synthetic peptide. (Original magnification: ×200)



Immunohistochemistry of paraffin-embedded Human thyroid cancer tissue using TA350889 (UPF1 Antibody) at dilution 1/35 (Original magnification: ×200)



Immunohistochemistry of paraffin-embedded Human thyroid cancer tissue using TA350889 (UPF1 Antibody) at dilution 1/35, treated with synthetic peptide. (Original magnification: ×200)