

Product datasheet for **TA350887S**

ATG4A Rabbit Polyclonal Antibody

Product data:

Product Type:	Primary Antibodies
Applications:	IHC, WB
Recommended Dilution:	WB: 200-1000 WB positive control: 231 cells IHC: 50-200 Positive control: Human colon cancer Predicted cell location: Cytoplasm
Reactivity:	Human
Host:	Rabbit
Isotype:	IgG
Clonality:	Polyclonal
Immunogen:	Synthetic peptide of human ATG4A
Formulation:	pH7.4 PBS, 0.05% NaN ₃ , 40% Glycerol
Purification:	Antigen affinity purification
Conjugation:	Unconjugated
Storage:	Store at -20°C as received.
Stability:	Stable for 12 months from date of receipt.
Predicted Protein Size:	45 kDa
Gene Name:	autophagy related 4A cysteine peptidase
Database Link:	NP_840054 Entrez Gene 115201 Human Q8WYN0



[View online »](#)

Background:

Autophagy is the process by which endogenous proteins and damaged organelles are destroyed intracellularly. Autophagy is postulated to be essential for cell homeostasis and cell remodeling during differentiation, metamorphosis, non-apoptotic cell death, and aging. Reduced levels of autophagy have been described in some malignant tumors, and a role for autophagy in controlling the unregulated cell growth linked to cancer has been proposed. This gene encodes a member of the autophagin protein family. The encoded protein is also designated as a member of the C-54 family of cysteine proteases. Transcript variants that encode distinct isoforms have been identified.

Synonyms:

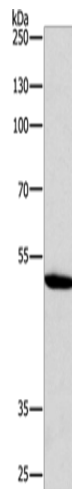
APG4A; AURL2

Protein Families:

Protease

Protein Pathways:

Regulation of autophagy

Product images:

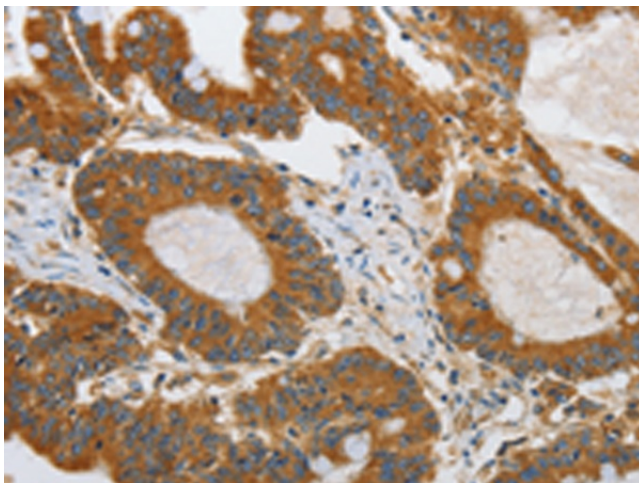
Gel: 10%SDS-PAGE

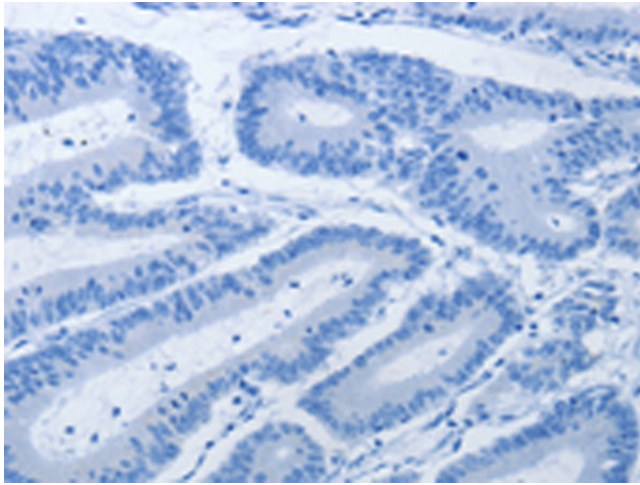
Lysate: 40 µg

Lane: 231 cells

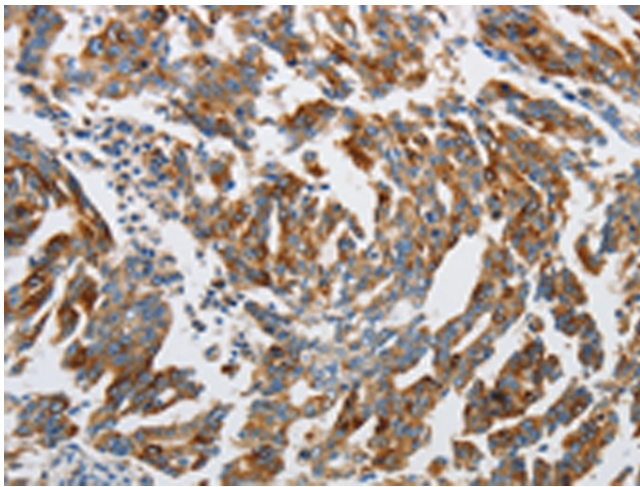
Primary antibody: [TA350887] (ATG4A Antibody)
at dilution 1/210Secondary antibody: Goat anti rabbit IgG at
1/8000 dilution

Exposure time: 2 minutes

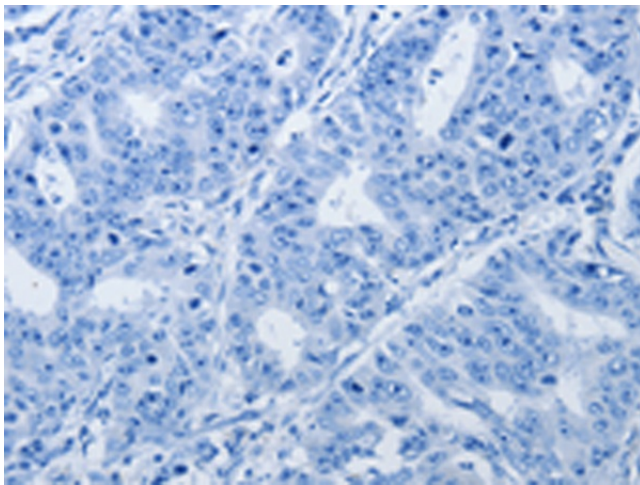
Immunohistochemistry of paraffin-embedded
Human colon cancer tissue using [TA350887]
(ATG4A Antibody) at dilution 1/45 (Original
magnification: ×200)



Immunohistochemistry of paraffin-embedded Human colon cancer tissue using [TA350887] (ATG4A Antibody) at dilution 1/45, treated with synthetic peptide. (Original magnification: ×200)



Immunohistochemistry of paraffin-embedded Human gastric cancer tissue using [TA350887] (ATG4A Antibody) at dilution 1/45 (Original magnification: ×200)



Immunohistochemistry of paraffin-embedded Human gastric cancer tissue using [TA350887] (ATG4A Antibody) at dilution 1/45, treated with synthetic peptide. (Original magnification: ×200)