

Product datasheet for **TA350884S**

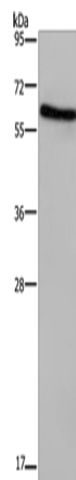
ART4 Rabbit Polyclonal Antibody

Product data:

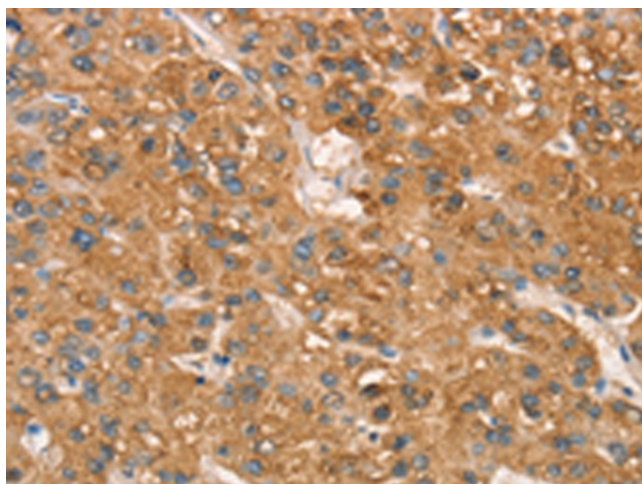
Product Type:	Primary Antibodies
Applications:	IHC, WB
Recommended Dilution:	WB: 1000-5000 WB positive control: Human placenta tissue IHC: 50-200 Positive control: Human liver cancer Predicted cell location: Cytoplasm
Reactivity:	Human
Host:	Rabbit
Isotype:	IgG
Clonality:	Polyclonal
Immunogen:	Synthetic peptide of human ART4
Formulation:	pH7.4 PBS, 0.05% NaN ₃ , 40% Glycerol
Purification:	Antigen affinity purification
Conjugation:	Unconjugated
Storage:	Store at -20°C as received.
Stability:	Stable for 12 months from date of receipt.
Predicted Protein Size:	36 kDa
Gene Name:	ADP-ribosyltransferase 4 (Dombrock blood group)
Database Link:	NP_066549 Entrez Gene 420 Human Q93070
Background:	This gene encodes a protein that contains a mono-ADP-ribosylation (ART) motif. It is a member of the ADP-ribosyltransferase gene family but enzymatic activity has not been demonstrated experimentally. Antigens of the Dombrock blood group system are located on the gene product, which is glycosylphosphatidylinositol-anchored to the erythrocyte membrane. Allelic variants, some of which lead to adverse transfusion reactions, are known.
Synonyms:	ARTC4; CD297; DO; DOK1


[View online »](#)

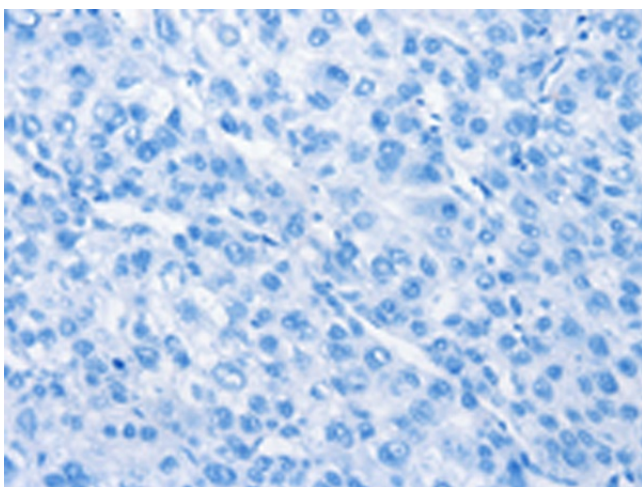
Product images:



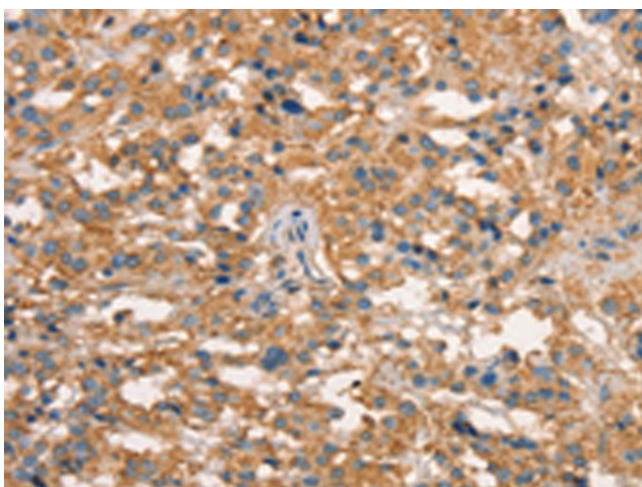
Gel: 10%SDS-PAGE
 Lysate: 40 µg
 Lane: Human placenta tissue
 Primary antibody: [TA350884] (ART4 Antibody) at dilution 1/1000
 Secondary antibody: Goat anti rabbit IgG at 1/8000 dilution
 Exposure time: 2 minutes



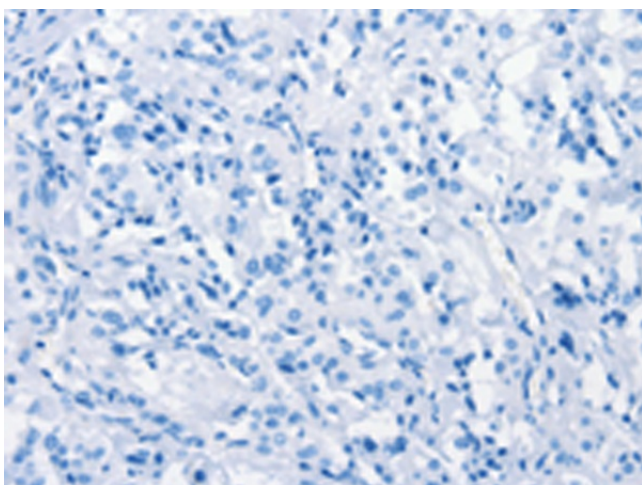
Immunohistochemistry of paraffin-embedded Human liver cancer tissue using [TA350884] (ART4 Antibody) at dilution 1/50 (Original magnification: ×200)



Immunohistochemistry of paraffin-embedded Human liver cancer tissue using [TA350884] (ART4 Antibody) at dilution 1/50, treated with synthetic peptide. (Original magnification: ×200)



Immunohistochemistry of paraffin-embedded Human thyroid cancer tissue using [TA350884] (ART4 Antibody) at dilution 1/50 (Original magnification: ×200)



Immunohistochemistry of paraffin-embedded Human thyroid cancer tissue using [TA350884] (ART4 Antibody) at dilution 1/50, treated with synthetic peptide. (Original magnification: ×200)