

Product datasheet for **TA350879**

Argonaute 4 (AGO4) Rabbit Polyclonal Antibody

Product data:

Product Type:	Primary Antibodies
Applications:	IHC
Recommended Dilution:	IHC: 25-100 Positive control: Human breast cancer Predicted cell location: Cytoplasm
Reactivity:	Human, Mouse
Host:	Rabbit
Isotype:	IgG
Clonality:	Polyclonal
Immunogen:	Synthetic peptide of human AGO4
Formulation:	pH7.4 PBS, 0.05% NaN ₃ , 40% Glycerol
Concentration:	lot specific
Purification:	Antigen affinity purification
Conjugation:	Unconjugated
Storage:	Store at -20°C as received.
Stability:	Stable for 12 months from date of receipt.
Gene Name:	argonaute 4, RISC catalytic component
Database Link:	NP_060099 Entrez Gene 76850 Mouse Entrez Gene 192670 Human Q9HCK5

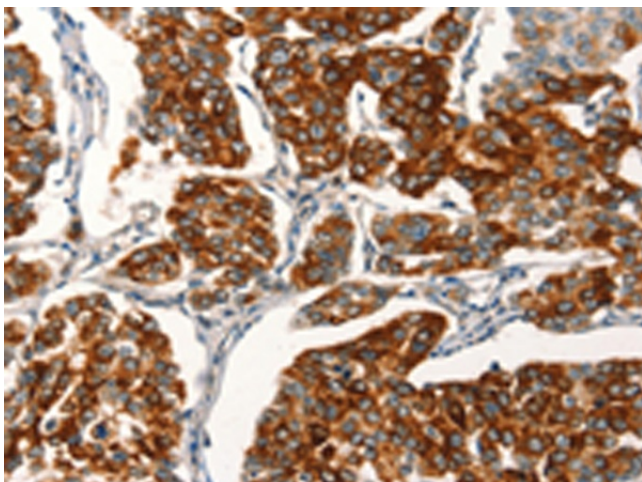
Background: This gene encodes a member of the Argonaute family of proteins which play a role in RNA interference. The encoded protein is highly basic containing PAZ and PIWI domains, and it may play a role in short-interfering-RNA-mediated gene silencing. This gene is located on chromosome 1 in a cluster of closely related family members including argonaute 3, and eukaryotic translation initiation factor 2C, 1.

Synonyms: EIF2C4

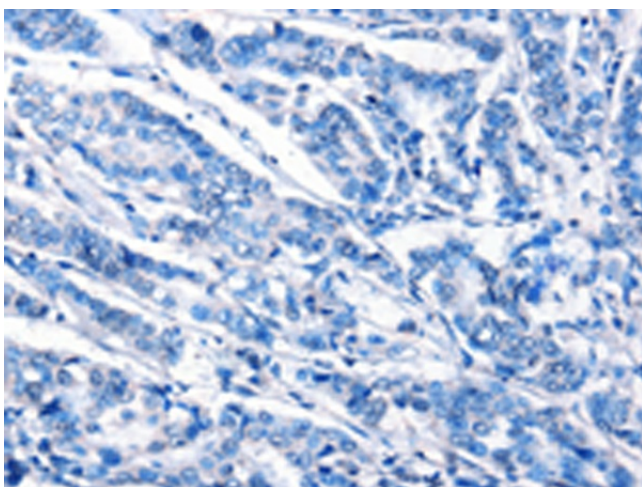
Protein Families: Druggable Genome



[View online »](#)

Product images:

Immunohistochemistry of paraffin-embedded Human breast cancer tissue using TA350879 (AGO4 Antibody) at dilution 1/25 (Original magnification: $\times 200$)



Immunohistochemistry of paraffin-embedded Human breast cancer tissue using TA350879 (AGO4 Antibody) at dilution 1/25, treated with synthetic peptide. (Original magnification: $\times 200$)