

Product datasheet for **TA350878S**

ARFRP1 Rabbit Polyclonal Antibody

Product data:

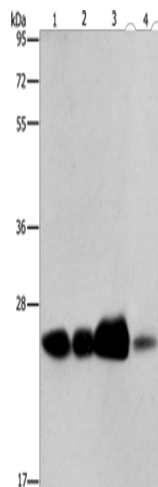
Product Type:	Primary Antibodies
Applications:	IHC, WB
Recommended Dilution:	WB: 500-2000 WB positive control: 293T cells and human fetal liver tissue, human cervical cancer and fetal muscle tissue IHC: 25-100 Positive control: Human breast cancer Predicted cell location: Cytoplasm
Reactivity:	Human, Mouse, Rat
Host:	Rabbit
Isotype:	IgG
Clonality:	Polyclonal
Immunogen:	Synthetic peptide of human ARFRP1
Formulation:	pH7.4 PBS, 0.05% NaN ₃ , 40% Glycerol
Purification:	Antigen affinity purification
Conjugation:	Unconjugated
Storage:	Store at -20°C as received.
Stability:	Stable for 12 months from date of receipt.
Predicted Protein Size:	23 kDa
Gene Name:	ADP ribosylation factor related protein 1
Database Link:	NP_003215 Entrez Gene 76688 Mouse Entrez Gene 117051 Rat Entrez Gene 10139 Human Q13795
Background:	The protein encoded by this gene is a membrane-associated GTP-ase which localizes to the plasma membrane and is related to the ADP-ribosylation factor (ARF) and ARF-like (ARL) proteins. This gene plays a role in membrane trafficking between the trans-Golgi network and endosomes. Alternatively spliced transcript variants encoding different isoforms have been identified.



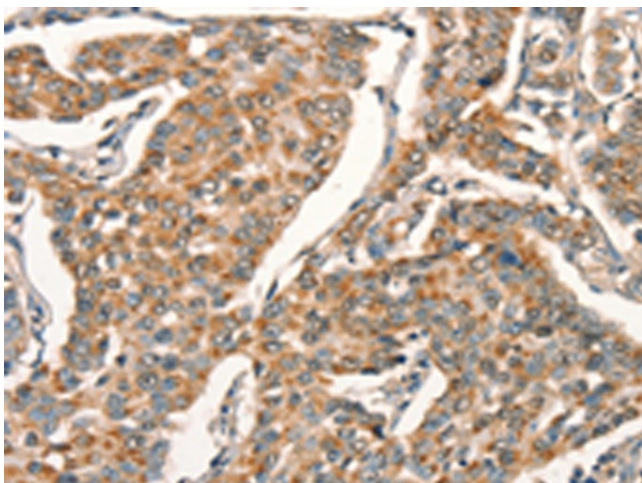
[View online »](#)

Synonyms: ARL18; ARP; Arp1

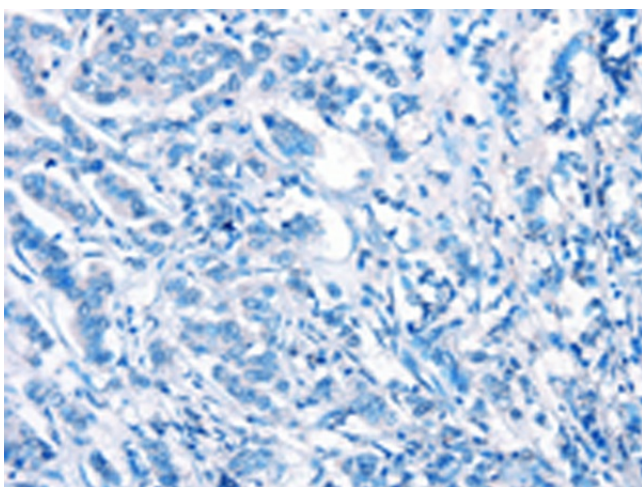
Product images:



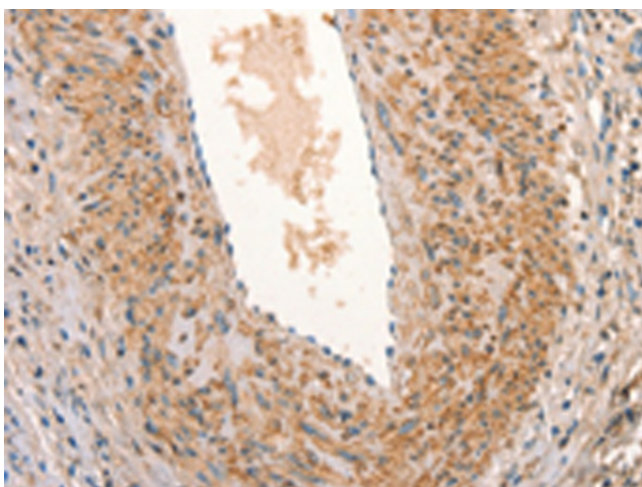
Gel: 8%SDS-PAGE
Lysate: 40 μ g
Lane 1-4: 293T cells
human fetal liver tissue
human cervical cancer tissue
Human fetal muscle tissue
Primary antibody: [TA350878] (ARFRP1 Antibody)
at dilution 1/800
Secondary antibody: Goat anti rabbit IgG at
1/8000 dilution
Exposure time: 40 seconds



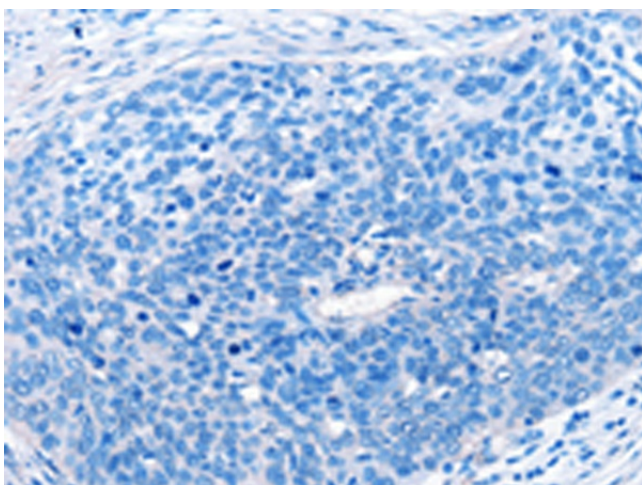
Immunohistochemistry of paraffin-embedded
Human breast cancer tissue using [TA350878]
(ARFRP1 Antibody) at dilution 1/25 (Original
magnification: \times 200)



Immunohistochemistry of paraffin-embedded Human breast cancer tissue using [TA350878] (ARFRP1 Antibody) at dilution 1/25, treated with synthetic peptide. (Original magnification: $\times 200$)



Immunohistochemistry of paraffin-embedded Human cervical cancer tissue using [TA350878] (ARFRP1 Antibody) at dilution 1/25 (Original magnification: $\times 200$)



Immunohistochemistry of paraffin-embedded Human cervical cancer tissue using [TA350878] (ARFRP1 Antibody) at dilution 1/25, treated with synthetic peptide. (Original magnification: $\times 200$)