

## Product datasheet for **TA350878**

### ARFRP1 Rabbit Polyclonal Antibody

#### Product data:

Product Type:	Primary Antibodies
Applications:	IHC, WB
Recommended Dilution:	WB: 500-2000 WB positive control: 293T cells and human fetal liver tissue, human cervical cancer and fetal muscle tissue IHC: 25-100 Positive control: Human breast cancer Predicted cell location: Cytoplasm
Reactivity:	Human, Mouse, Rat
Host:	Rabbit
Isotype:	IgG
Clonality:	Polyclonal
Immunogen:	Synthetic peptide of human ARFRP1
Formulation:	pH7.4 PBS, 0.05% NaN <sub>3</sub> , 40% Glycerol
Concentration:	lot specific
Purification:	Antigen affinity purification
Conjugation:	Unconjugated
Storage:	Store at -20°C as received.
Stability:	Stable for 12 months from date of receipt.
Predicted Protein Size:	23 kDa
Gene Name:	ADP ribosylation factor related protein 1
Database Link:	<a href="#">NP_003215</a> <a href="#">Entrez Gene 76688 Mouse</a> <a href="#">Entrez Gene 117051 Rat</a> <a href="#">Entrez Gene 10139 Human</a> <a href="#">Q13795</a>



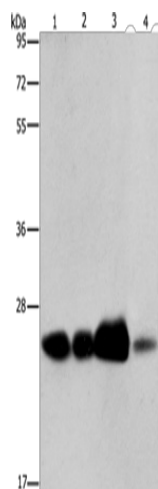
[View online »](#)

**Background:**

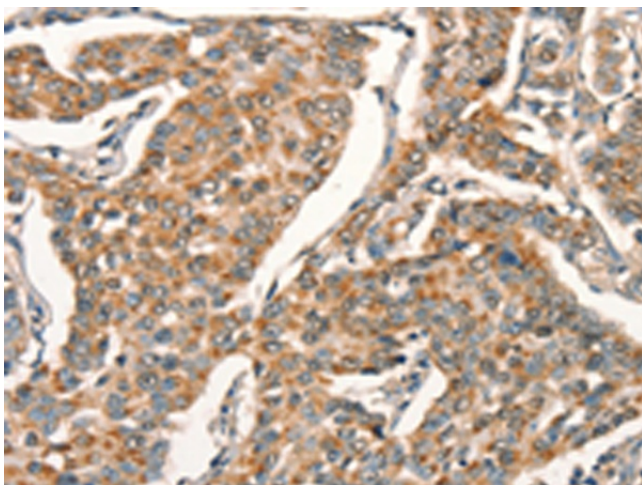
The protein encoded by this gene is a membrane-associated GTP-ase which localizes to the plasma membrane and is related to the ADP-ribosylation factor (ARF) and ARF-like (ARL) proteins. This gene plays a role in membrane trafficking between the trans-Golgi network and endosomes. Alternatively spliced transcript variants encoding different isoforms have been identified.

**Synonyms:**

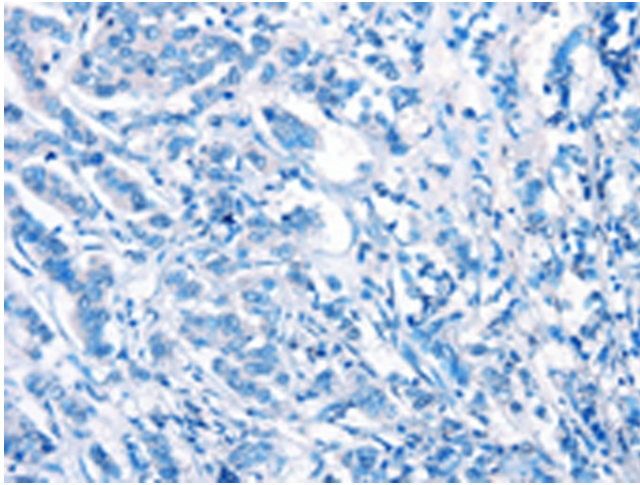
ARL18; ARP; Arp1

**Product images:**

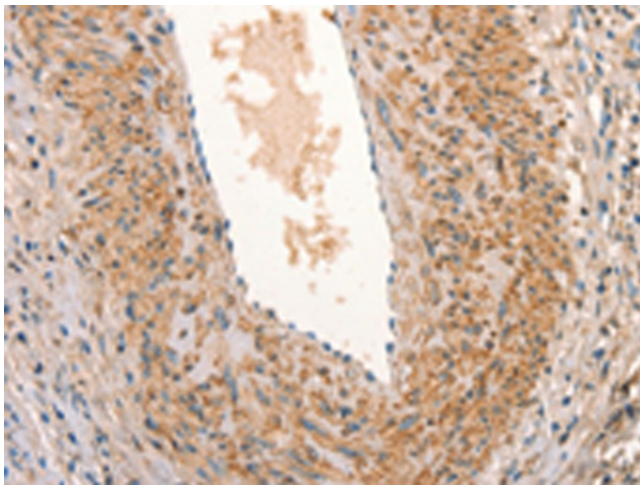
Gel: 8%SDS-PAGE  
Lysate: 40  $\mu$ g  
Lane 1-4: 293T cells  
human fetal liver tissue  
human cervical cancer tissue  
Human fetal muscle tissue  
Primary antibody: TA350878 (ARFRP1 Antibody)  
at dilution 1/800  
Secondary antibody: Goat anti rabbit IgG at  
1/8000 dilution  
Exposure time: 40 seconds



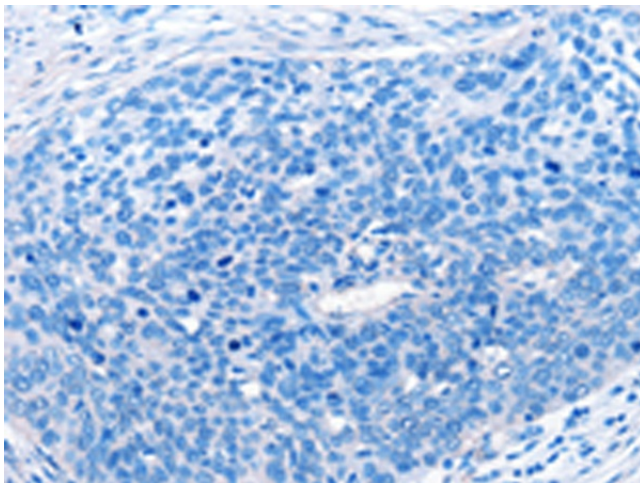
Immunohistochemistry of paraffin-embedded  
Human breast cancer tissue using TA350878  
(ARFRP1 Antibody) at dilution 1/25 (Original  
magnification:  $\times 200$ )



Immunohistochemistry of paraffin-embedded Human breast cancer tissue using TA350878 (ARFRP1 Antibody) at dilution 1/25, treated with synthetic peptide. (Original magnification: ×200)



Immunohistochemistry of paraffin-embedded Human cervical cancer tissue using TA350878 (ARFRP1 Antibody) at dilution 1/25 (Original magnification: ×200)



Immunohistochemistry of paraffin-embedded Human cervical cancer tissue using TA350878 (ARFRP1 Antibody) at dilution 1/25, treated with synthetic peptide. (Original magnification: ×200)