

Product datasheet for **TA350877**

ARFGEF2 Rabbit Polyclonal Antibody

Product data:

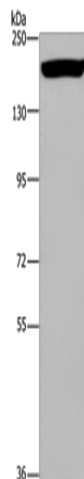
Product Type:	Primary Antibodies
Applications:	IHC, WB
Recommended Dilution:	WB: 200-1000 WB positive control: Mouse heart tissue IHC: 50-200 Positive control: Human thyroid cancer Predicted cell location: Cytoplasm
Reactivity:	Human, Mouse, Rat
Host:	Rabbit
Isotype:	IgG
Clonality:	Polyclonal
Immunogen:	Synthetic peptide of human ARFGEF2
Formulation:	pH7.4 PBS, 0.05% NaN ₃ , 40% Glycerol
Concentration:	lot specific
Purification:	Antigen affinity purification
Conjugation:	Unconjugated
Storage:	Store at -20°C as received.
Stability:	Stable for 12 months from date of receipt.
Predicted Protein Size:	202 kDa
Gene Name:	ADP ribosylation factor guanine nucleotide exchange factor 2
Database Link:	NP_006411 Entrez Gene 99371 Mouse Entrez Gene 296380 Rat Entrez Gene 10564 Human Q9Y6D5
Background:	ADP-ribosylation factors (ARFs) play an important role in intracellular vesicular trafficking. The protein encoded by this gene is involved in the activation of ARFs by accelerating replacement of bound GDP with GTP and is involved in Golgi transport. It contains a Sec7 domain, which may be responsible for its guanine-nucleotide exchange activity and also brefeldin A inhibition.



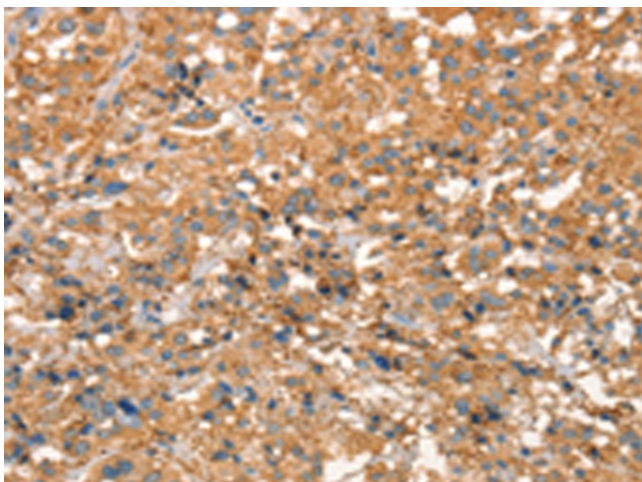
[View online »](#)

Synonyms: BIG2; dj1164110.1; PVNH2

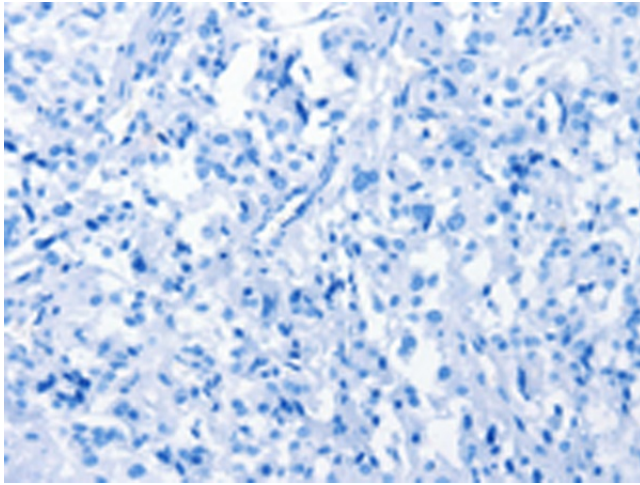
Product images:



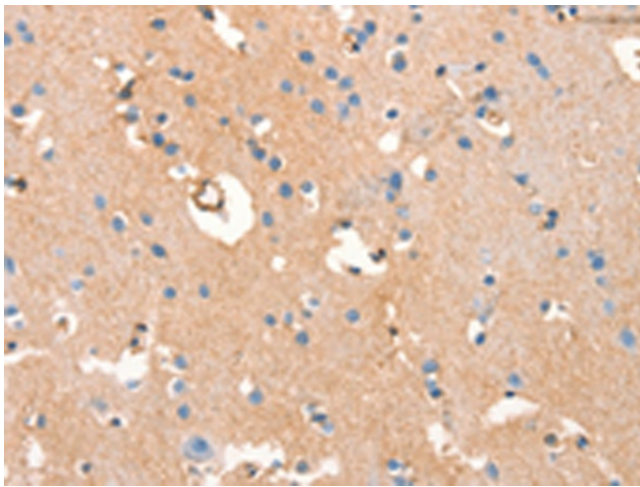
Gel: 6%SDS-PAGE
Lysate: 50 μ g
Lane: Mouse heart tissue
Primary antibody: TA350877 (ARFGEF2 Antibody)
at dilution 1/200
Secondary antibody: Goat anti rabbit IgG at
1/8000 dilution
Exposure time: 5 minutes



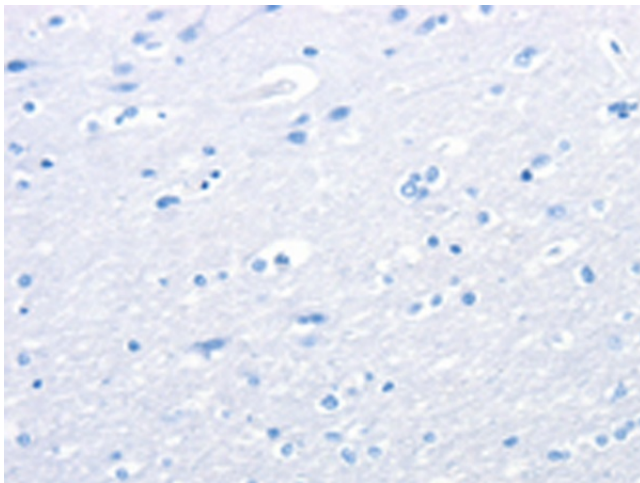
Immunohistochemistry of paraffin-embedded
Human thyroid cancer tissue using TA350877
(ARFGEF2 Antibody) at dilution 1/50 (Original
magnification: \times 200)



Immunohistochemistry of paraffin-embedded Human thyroid cancer tissue using TA350877 (ARFGEF2 Antibody) at dilution 1/50, treated with synthetic peptide. (Original magnification: $\times 200$)



Immunohistochemistry of paraffin-embedded Human brain tissue using TA350877 (ARFGEF2 Antibody) at dilution 1/50 (Original magnification: $\times 200$)



Immunohistochemistry of paraffin-embedded Human brain tissue using TA350877 (ARFGEF2 Antibody) at dilution 1/50, treated with synthetic peptide. (Original magnification: $\times 200$)