

Product datasheet for **TA350868**

ARHGEF6 Rabbit Polyclonal Antibody

Product data:

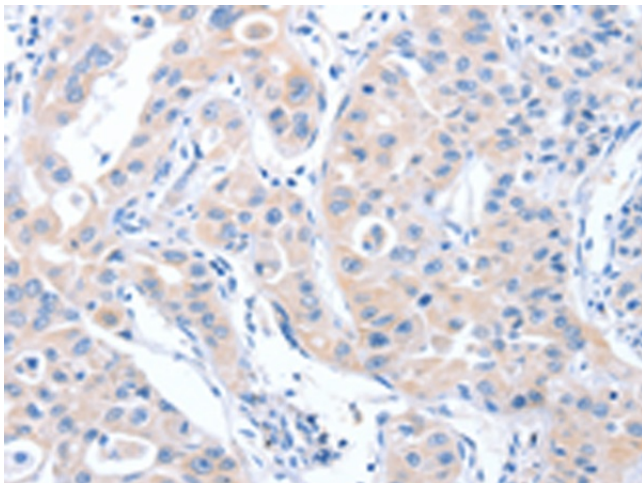
Product Type:	Primary Antibodies
Applications:	IHC
Recommended Dilution:	IHC: 50-200 Positive control: Human lung cancer Predicted cell location: Cytoplasm
Reactivity:	Human, Mouse, Rat
Host:	Rabbit
Isotype:	IgG
Clonality:	Polyclonal
Immunogen:	Synthetic peptide of human ARHGEF6
Formulation:	pH7.4 PBS, 0.05% NaN ₃ , 40% Glycerol
Concentration:	lot specific
Purification:	Antigen affinity purification
Conjugation:	Unconjugated
Storage:	Store at -20°C as received.
Stability:	Stable for 12 months from date of receipt.
Gene Name:	Rac/Cdc42 guanine nucleotide exchange factor 6
Database Link:	NP_004831 Entrez Gene 9459 Human Q15052
Background:	Rho GTPases play a fundamental role in numerous cellular processes that are initiated by extracellular stimuli that work through G protein coupled receptors. The encoded protein belongs to a family of cytoplasmic proteins that activate the Ras-like family of Rho proteins by exchanging bound GDP for GTP. It may form a complex with G proteins and stimulate Rho-dependent signals. This protein is activated by PI3-kinase. Mutations in this gene can cause X-chromosomal non-specific mental retardation.
Synonyms:	alpha-PIX; alphaPIX; Cool-2; COOL2; MRX46; PIXA
Protein Families:	Druggable Genome



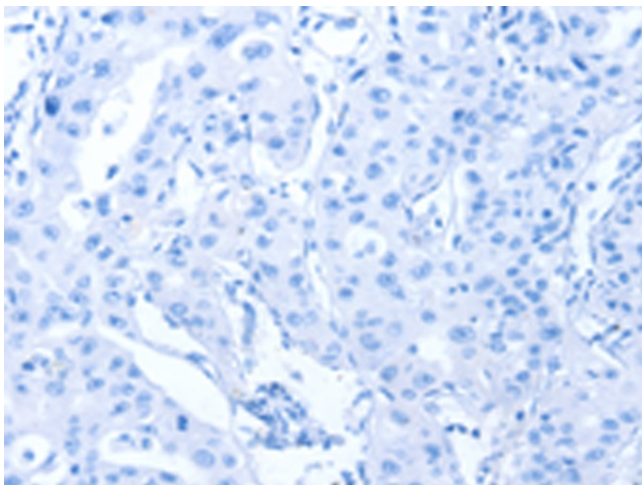
[View online »](#)

Protein Pathways: Pancreatic cancer, Regulation of actin cytoskeleton

Product images:



Immunohistochemistry of paraffin-embedded Human lung cancer tissue using TA350868 (ARHGEF6 Antibody) at dilution 1/70 (Original magnification: ×200)



Immunohistochemistry of paraffin-embedded Human lung cancer tissue using TA350868 (ARHGEF6 Antibody) at dilution 1/70, treated with synthetic peptide. (Original magnification: ×200)