

## Product datasheet for **TA350866**

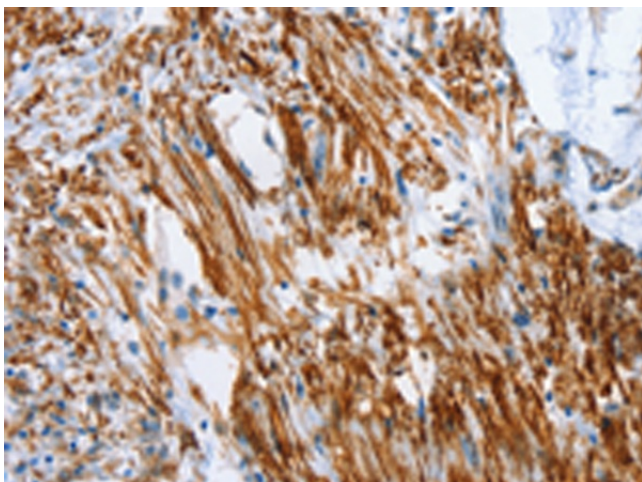
### APXL (SHROOM2) Rabbit Polyclonal Antibody

#### Product data:

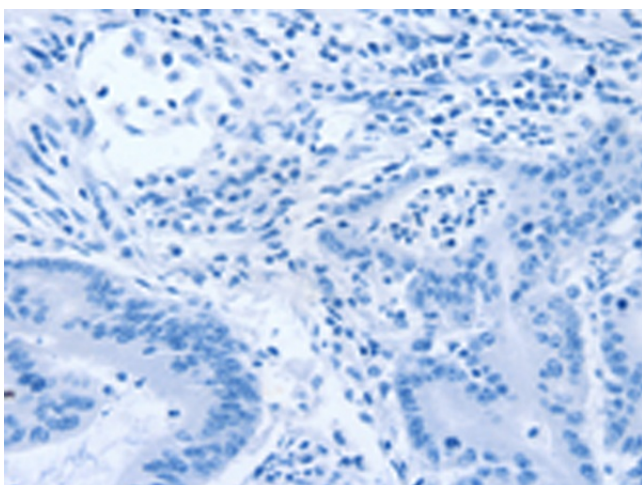
Product Type:	Primary Antibodies
Applications:	IHC
Recommended Dilution:	IHC: 50-200 Positive control: Human colon cancer Predicted cell location: Cytoplasm
Reactivity:	Human
Host:	Rabbit
Isotype:	IgG
Clonality:	Polyclonal
Immunogen:	Synthetic peptide of human SHROOM2
Formulation:	pH7.4 PBS, 0.05% NaN <sub>3</sub> , 40% Glycerol
Concentration:	lot specific
Purification:	Antigen affinity purification
Conjugation:	Unconjugated
Storage:	Store at -20°C as received.
Stability:	Stable for 12 months from date of receipt.
Gene Name:	shroom family member 2
Database Link:	<a href="#">NP_001640</a> <a href="#">Entrez Gene 357 Human</a> <a href="#">Q13796</a>
Background:	The protein encoded by this gene shares significant similarities with the apical protein from <i>Xenopus laevis</i> which is implicated in amiloride-sensitive sodium channel activity. This gene is a strong candidate gene for ocular albinism type 1 syndrome.
Synonyms:	APXL; HSAPXL
Protein Families:	Druggable Genome



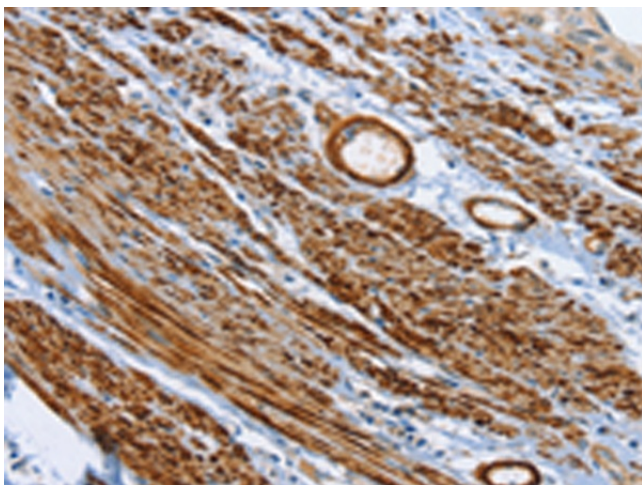
[View online »](#)

**Product images:**

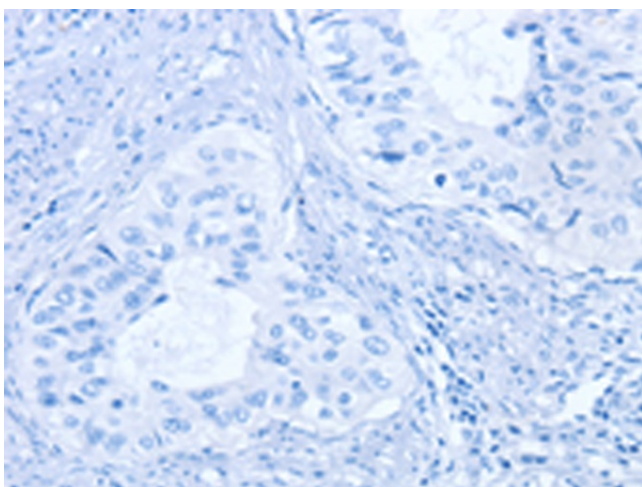
Immunohistochemistry of paraffin-embedded Human colon cancer tissue using TA350866 (SHROOM2 Antibody) at dilution 1/50 (Original magnification:  $\times 200$ )



Immunohistochemistry of paraffin-embedded Human colon cancer tissue using TA350866 (SHROOM2 Antibody) at dilution 1/50, treated with synthetic peptide. (Original magnification:  $\times 200$ )



Immunohistochemistry of paraffin-embedded Human cervical cancer tissue using TA350866 (SHROOM2 Antibody) at dilution 1/50 (Original magnification:  $\times 200$ )



Immunohistochemistry of paraffin-embedded Human cervical cancer tissue using TA350866 (SHROOM2 Antibody) at dilution 1/50, treated with synthetic peptide. (Original magnification:  $\times 200$ )