

Product datasheet for **TA350863**

APOBEC3C Rabbit Polyclonal Antibody

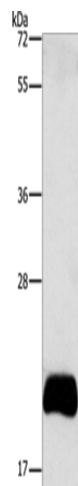
Product data:

Product Type:	Primary Antibodies
Applications:	WB
Recommended Dilution:	WB: 500-2000 WB positive control: PC3 cells
Reactivity:	Human
Host:	Rabbit
Isotype:	IgG
Clonality:	Polyclonal
Immunogen:	Synthetic peptide of human APOBEC3C
Formulation:	pH7.4 PBS, 0.05% NaN ₃ , 40% Glycerol
Concentration:	lot specific
Purification:	Antigen affinity purification
Conjugation:	Unconjugated
Storage:	Store at -20°C as received.
Stability:	Stable for 12 months from date of receipt.
Predicted Protein Size:	23 kDa
Gene Name:	apolipoprotein B mRNA editing enzyme catalytic subunit 3C
Database Link:	NP_055323 Entrez Gene 27350 Human Q9NRW3
Background:	This gene is a member of the cytidine deaminase gene family. It is one of seven related genes or pseudogenes found in a cluster thought to result from gene duplication, on chromosome 22. Members of the cluster encode proteins that are structurally and functionally related to the C to U RNA-editing cytidine deaminase APOBEC1. It is thought that the proteins may be RNA editing enzymes and have roles in growth or cell cycle control.
Synonyms:	A3C; APOBEC1L; ARDC2; ARDC4; ARP5; bK150C2.3; PBI



[View online »](#)

Product images:



Gel: 12%SDS-PAGE
Lysate: 40 μ g
Lane: PC3 cells
Primary antibody: TA350863 (APOBEC3C Antibody) at dilution 1/420
Secondary antibody: Goat anti rabbit IgG at 1/8000 dilution
Exposure time: 15 seconds