

Product datasheet for **TA350862S**

APOBEC2 Rabbit Polyclonal Antibody

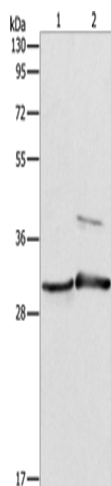
Product data:

Product Type:	Primary Antibodies
Applications:	WB
Recommended Dilution:	WB: 200-1000 WB positive control: Mouse muscle and skin tissue
Reactivity:	Human, Mouse
Host:	Rabbit
Isotype:	IgG
Clonality:	Polyclonal
Immunogen:	Synthetic peptide of human APOBEC2
Formulation:	pH7.4 PBS, 0.05% NaN ₃ , 40% Glycerol
Purification:	Antigen affinity purification
Conjugation:	Unconjugated
Storage:	Store at -20°C as received.
Stability:	Stable for 12 months from date of receipt.
Predicted Protein Size:	26 kDa
Gene Name:	apolipoprotein B mRNA editing enzyme catalytic subunit 2
Database Link:	NP_006780 Entrez Gene 11811 Mouse Entrez Gene 10930 Human Q9Y235
Background:	Apolipoprotein B mRNA editing enzyme, catalytic polypeptide-like 2 (APOBEC2) is a 224 amino acid protein that belongs to the cytidine and deoxycytidylate deaminase family. Expressed exclusively in heart and skeletal muscle, APOBEC2 is thought to be a probable C (cytidine) to U (uridine) editing enzyme. However, unlike other members of the family, such as APOBEC1, which mediates the editing of apolipoprotein (apo) B mRNA, APOBEC2 does not display any detectable apoB mRNA editing activity. Also, APOBEC2 has been shown to have low, but definite, intrinsic cytidine deaminase activity.
Synonyms:	ARCD1; ARP1



[View online »](#)

Product images:



Gel: 10%SDS-PAGE
Lysate: 40 μ g
Lane 1-2: Mouse muscle tissue
Mouse skin tissue
Primary antibody: [TA350862] (APOBEC2
Antibody) at dilution 1/450
Secondary antibody: Goat anti rabbit IgG at
1/8000 dilution
Exposure time: 10 seconds