

## Product datasheet for **TA350862**

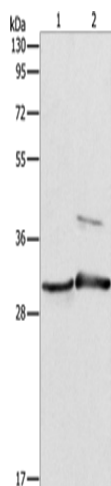
### **APOBEC2 Rabbit Polyclonal Antibody**

#### **Product data:**

|                         |   |
|-------------------------|---|
| Product Type:           | Primary Antibodies  |
| Applications:           | WB  |
| Recommended Dilution:   | WB: 200-1000<br>WB positive control: Mouse muscle and skin tissue   |
| Reactivity:             | Human, Mouse  |
| Host:                   | Rabbit  |
| Isotype:                | IgG   |
| Clonality:              | Polyclonal  |
| Immunogen:              | Synthetic peptide of human APOBEC2  |
| Formulation:            | pH7.4 PBS, 0.05% NaN <sub>3</sub> , 40% Glycerol  |
| Concentration:          | lot specific  |
| Purification:           | Antigen affinity purification   |
| Conjugation:            | Unconjugated  |
| Storage:                | Store at -20°C as received.   |
| Stability:              | Stable for 12 months from date of receipt.  |
| Predicted Protein Size: | 26 kDa  |
| Gene Name:              | apolipoprotein B mRNA editing enzyme catalytic subunit 2  |
| Database Link:          | <a href="#">NP_006780</a><br><a href="#">Entrez Gene 11811 Mouse</a> <a href="#">Entrez Gene 10930 Human</a><br><a href="#">Q9Y235</a>  |
| Background:             | Apolipoprotein B mRNA editing enzyme, catalytic polypeptide-like 2 (APOBEC2) is a 224 amino acid protein that belongs to the cytidine and deoxycytidylate deaminase family. Expressed exclusively in heart and skeletal muscle, APOBEC2 is thought to be a probable C (cytidine) to U (uridine) editing enzyme. However, unlike other members of the family, such as APOBEC1, which mediates the editing of apolipoprotein (apo) B mRNA, APOBEC2 does not display any detectable apoB mRNA editing activity. Also, APOBEC2 has been shown to have low, but definite, intrinsic cytidine deaminase activity. |
| Synonyms:               | ARCD1; ARP1   |



[View online »](#)

**Product images:**

Gel: 10%SDS-PAGE

Lysate: 40 µg

Lane 1-2: Mouse muscle tissue

Mouse skin tissue

Primary antibody: TA350862 (APOBEC2 Antibody)  
at dilution 1/450

Secondary antibody: Goat anti rabbit IgG at  
1/8000 dilution

Exposure time: 10 seconds