

Product datasheet for **TA350861**

Apolipoprotein L 2 (APOL2) Rabbit Polyclonal Antibody

Product data:

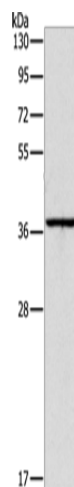
Product Type:	Primary Antibodies
Applications:	IHC, WB
Recommended Dilution:	WB: 200-1000 WB positive control: Huvec cells IHC: 100-300 Positive control: Human liver cancer Predicted cell location: Cytoplasm
Reactivity:	Human
Host:	Rabbit
Isotype:	IgG
Clonality:	Polyclonal
Immunogen:	Synthetic peptide of human APOL2
Formulation:	pH7.4 PBS, 0.05% NaN ₃ , 40% Glycerol
Concentration:	lot specific
Purification:	Antigen affinity purification
Conjugation:	Unconjugated
Storage:	Store at -20°C as received.
Stability:	Stable for 12 months from date of receipt.
Predicted Protein Size:	37 kDa
Gene Name:	apolipoprotein L2
Database Link:	NP_112092 Entrez Gene 23780 Human Q9BQE5
Background:	This gene is a member of the apolipoprotein L gene family. The encoded protein is found in the cytoplasm, where it may affect the movement of lipids or allow the binding of lipids to organelles. Two transcript variants encoding the same protein have been found for this gene.
Synonyms:	APOL-II; APOL3



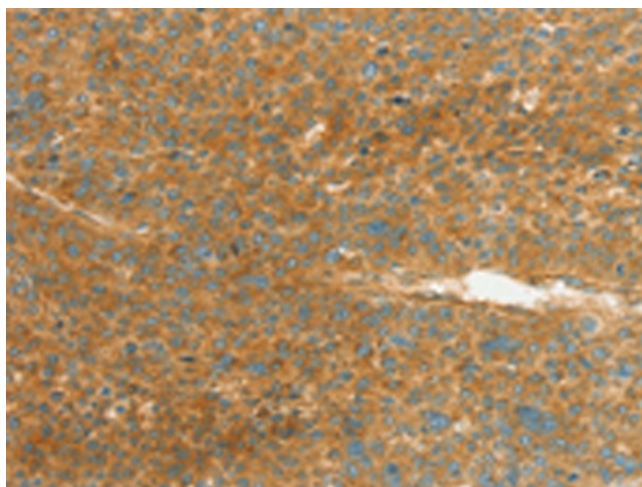
[View online »](#)

Protein Families: Druggable Genome, Transmembrane

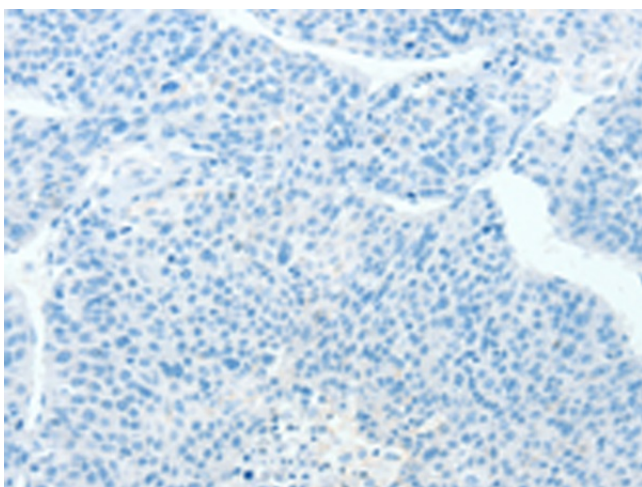
Product images:



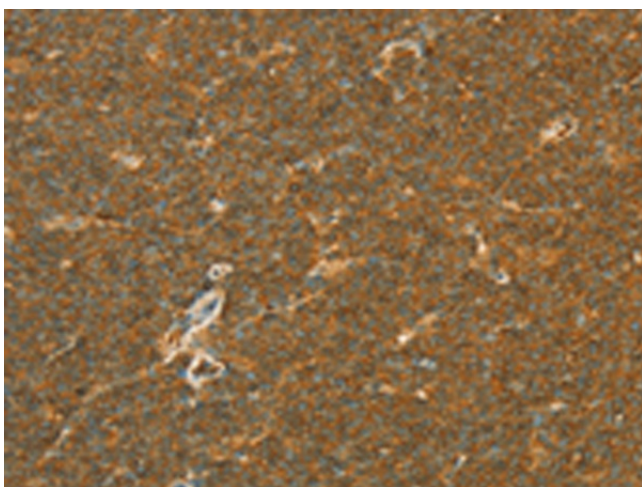
Gel: 10%SDS-PAGE
Lysate: 40 µg
Lane: Huvec cells
Primary antibody: TA350861 (APOL2 Antibody) at dilution 1/375
Secondary antibody: Goat anti rabbit IgG at 1/8000 dilution
Exposure time: 40 seconds



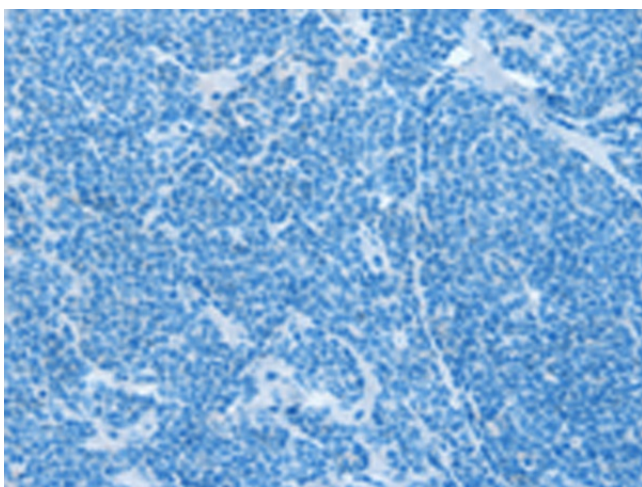
Immunohistochemistry of paraffin-embedded Human liver cancer tissue using TA350861 (APOL2 Antibody) at dilution 1/80 (Original magnification: ×200)



Immunohistochemistry of paraffin-embedded Human liver cancer tissue using TA350861 (APOL2 Antibody) at dilution 1/80, treated with synthetic peptide. (Original magnification: $\times 200$)



Immunohistochemistry of paraffin-embedded Human lymphoma tissue using TA350861 (APOL2 Antibody) at dilution 1/80 (Original magnification: $\times 200$)



Immunohistochemistry of paraffin-embedded Human lymphoma tissue using TA350861 (APOL2 Antibody) at dilution 1/80, treated with synthetic peptide. (Original magnification: $\times 200$)