

## Product datasheet for **TA350859**

### APBA2 Rabbit Polyclonal Antibody

#### Product data:

|                       |  |
|-----------------------|--|
| Product Type:         | Primary Antibodies   |
| Applications:         | IHC  |
| Recommended Dilution: | IHC: 100-300<br>Positive control: Human liver cancer<br>Predicted cell location: Cytoplasm   |
| Reactivity:           | Human  |
| Host:                 | Rabbit   |
| Isotype:              | IgG  |
| Clonality:            | Polyclonal   |
| Immunogen:            | Synthetic peptide of human APBA2   |
| Formulation:          | pH7.4 PBS, 0.05% NaN <sub>3</sub> , 40% Glycerol   |
| Concentration:        | lot specific   |
| Purification:         | Antigen affinity purification  |
| Conjugation:          | Unconjugated   |
| Storage:              | Store at -20°C as received.  |
| Stability:            | Stable for 12 months from date of receipt.   |
| Gene Name:            | amyloid beta precursor protein binding family A member 2                                     |
| Database Link:        | <a href="#">NP_005494</a><br><a href="#">Entrez Gene 321 Human</a><br><a href="#">Q99767</a> |

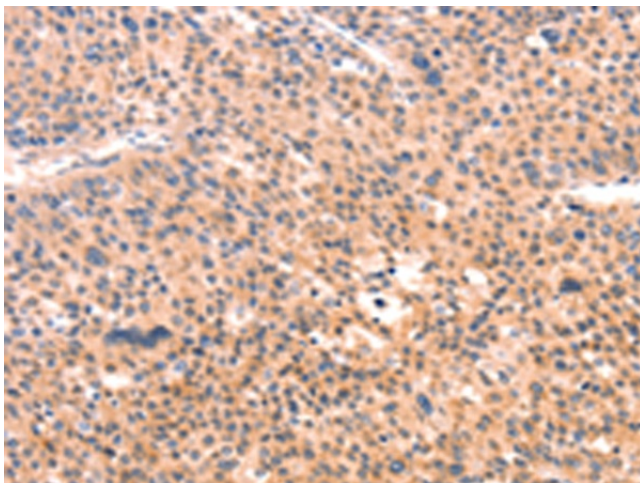
**Background:** The protein encoded by this gene is a member of the X11 protein family. It is a neuronal adapter protein that interacts with the Alzheimer's disease amyloid precursor protein (APP). It stabilizes APP and inhibits production of proteolytic APP fragments including the A beta peptide that is deposited in the brains of Alzheimer's disease patients. This gene product is believed to be involved in signal transduction processes. It is also regarded as a putative vesicular trafficking protein in the brain that can form a complex with the potential to couple synaptic vesicle exocytosis to neuronal cell adhesion. Multiple transcript variants encoding different isoforms have been found for this gene.



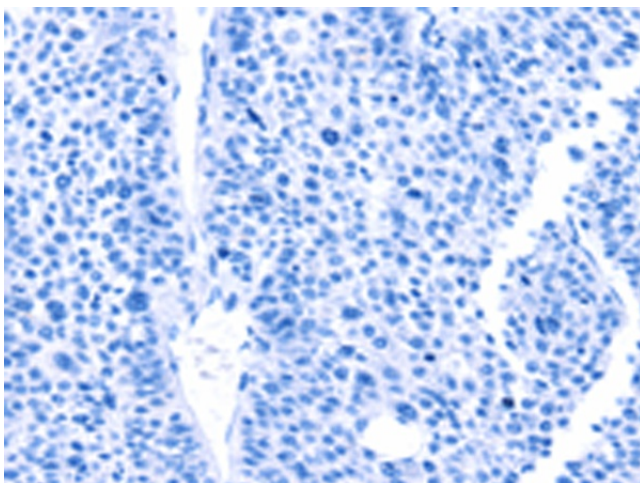
[View online »](#)

**Synonyms:** D15S1518E; HsT16821; LIN-10; MGC:14091; MINT2; X11-BETA; X11L

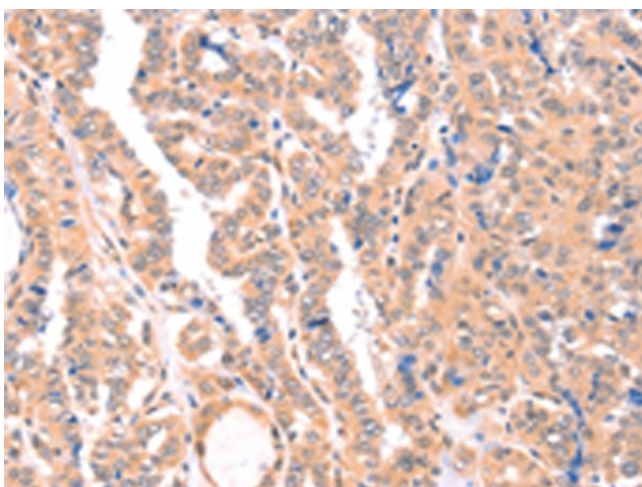
**Product images:**



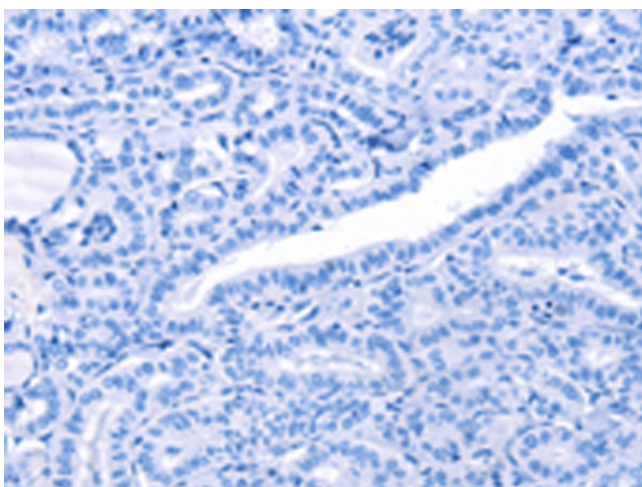
Immunohistochemistry of paraffin-embedded Human liver cancer tissue using TA350859 (APBA2 Antibody) at dilution 1/80 (Original magnification: ×200)



Immunohistochemistry of paraffin-embedded Human liver cancer tissue using TA350859 (APBA2 Antibody) at dilution 1/80, treated with synthetic peptide. (Original magnification: ×200)



Immunohistochemistry of paraffin-embedded Human thyroid cancer tissue using TA350859 (APBA2 Antibody) at dilution 1/80 (Original magnification: ×200)



Immunohistochemistry of paraffin-embedded Human thyroid cancer tissue using TA350859 (APBA2 Antibody) at dilution 1/80, treated with synthetic peptide. (Original magnification: ×200)