

## Product datasheet for **TA350858**

### APBA1 Rabbit Polyclonal Antibody

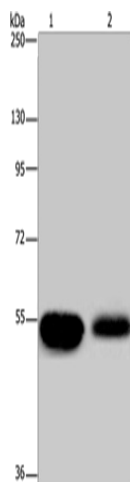
#### Product data:

Product Type:	Primary Antibodies
Applications:	WB
Recommended Dilution:	WB: 500-2000 WB positive control: Human fetal brain and mouse brain tissue
Reactivity:	Human, Mouse, Rat
Host:	Rabbit
Isotype:	IgG
Clonality:	Polyclonal
Immunogen:	Synthetic peptide of human APBA1
Formulation:	pH7.4 PBS, 0.05% NaN <sub>3</sub> , 40% Glycerol
Concentration:	lot specific
Purification:	Antigen affinity purification
Conjugation:	Unconjugated
Storage:	Store at -20°C as received.
Stability:	Stable for 12 months from date of receipt.
Predicted Protein Size:	93 kDa
Gene Name:	amyloid beta precursor protein binding family A member 1
Database Link:	<a href="#">NP_001154</a> <a href="#">Entrez Gene 83589 Rat</a> <a href="#">Entrez Gene 319924 Mouse</a> <a href="#">Entrez Gene 320 Human</a> <a href="#">Q02410</a>
Background:	The protein encoded by this gene is a member of the X11 protein family. It is a neuronal adapter protein that interacts with the Alzheimer's disease amyloid precursor protein (APP). It stabilizes APP and inhibits production of proteolytic APP fragments including the A beta peptide that is deposited in the brains of Alzheimer's disease patients. This gene product is believed to be involved in signal transduction processes. It is also regarded as a putative vesicular trafficking protein in the brain that can form a complex with the potential to couple synaptic vesicle exocytosis to neuronal cell adhesion.
Synonyms:	D9S411E; LIN10; MINT1; X11; X11A; X11ALPHA



[View online »](#)

## Product images:



Gel: 8%SDS-PAGE

Lysate: 50  $\mu$ g

Lane 1-2: Human fetal brain tissue  
mouse brain tissue

Primary antibody: TA350858 (APBA1 Antibody) at  
dilution 1/200

Secondary antibody: Goat anti rabbit IgG at  
1/8000 dilution

Exposure time: 10 seconds