

## Product datasheet for **TA350852S**

### Angiopoietin 4 (ANGPT4) Rabbit Polyclonal Antibody

#### Product data:

Product Type:	Primary Antibodies
Applications:	IHC, WB
Recommended Dilution:	WB: 200-1000 WB positive control: Human right lung and left lung cancer tissue IHC: 100-300 Positive control: Human liver cancer Predicted cell location: Nucleus
Reactivity:	Human
Host:	Rabbit
Isotype:	IgG
Clonality:	Polyclonal
Immunogen:	Synthetic peptide of human ANGPT4
Formulation:	pH7.4 PBS, 0.05% NaN <sub>3</sub> , 40% Glycerol
Purification:	Antigen affinity purification
Conjugation:	Unconjugated
Storage:	Store at -20°C as received.
Stability:	Stable for 12 months from date of receipt.
Predicted Protein Size:	57 kDa
Gene Name:	angiopoietin 4
Database Link:	<a href="#">NP_057069</a> <a href="#">Entrez Gene 51378 Human Q9Y264</a>
Background:	Angiopoietins are proteins with important roles in vascular development and angiogenesis. All angiopoietins bind with similar affinity to an endothelial cell-specific tyrosine-protein kinase receptor. The mechanism by which they contribute to angiogenesis is thought to involve regulation of endothelial cell interactions with supporting perivascular cells. The protein encoded by this gene functions as an agonist and is an angiopoietin.
Synonyms:	ANG3; ANG4



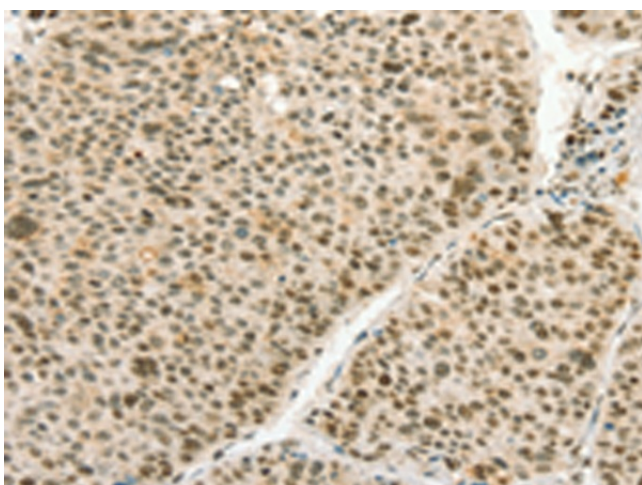
[View online »](#)

Protein Families: Druggable Genome, Secreted Protein

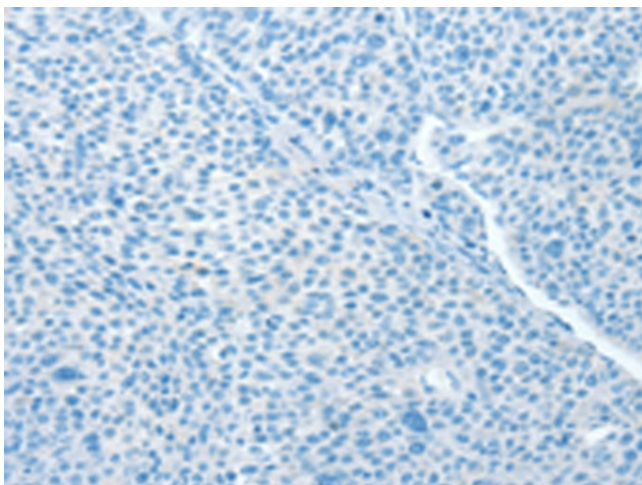
### Product images:



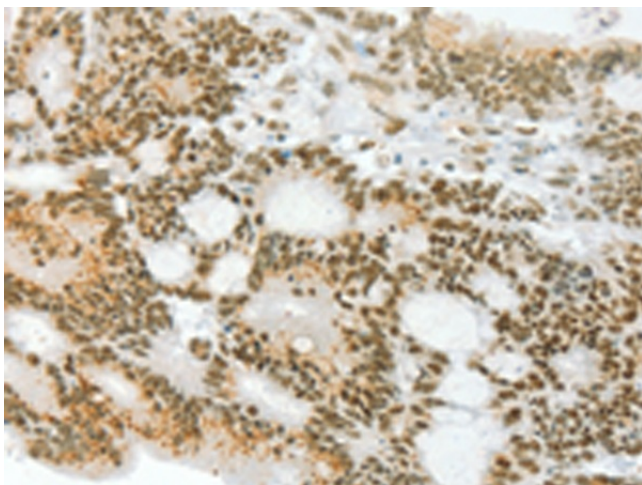
Gel: 8%SDS-PAGE  
Lysate: 40  $\mu$ g  
Lane 1-2: Human right lung tissue  
Human left lung cancer tissue  
Primary antibody: [TA350852] (ANGPT4 Antibody)  
at dilution 1/480  
Secondary antibody: Goat anti rabbit IgG at  
1/8000 dilution  
Exposure time: 2 minutes



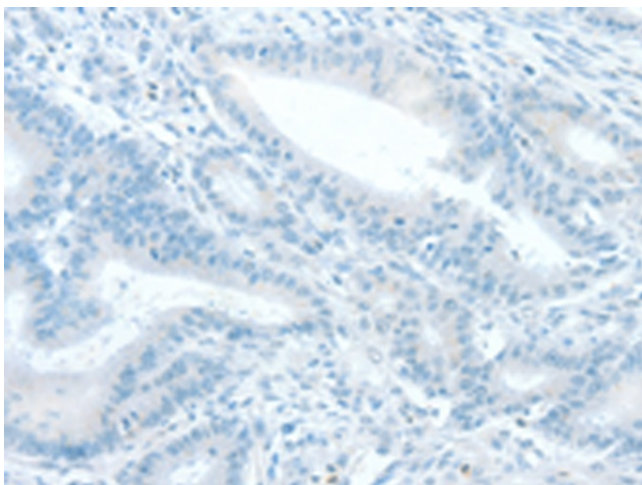
Immunohistochemistry of paraffin-embedded  
Human liver cancer tissue using [TA350852]  
(ANGPT4 Antibody) at dilution 1/70 (Original  
magnification:  $\times$ 200)



Immunohistochemistry of paraffin-embedded Human liver cancer tissue using [TA350852] (ANGPT4 Antibody) at dilution 1/70, treated with synthetic peptide. (Original magnification:  $\times 200$ )



Immunohistochemistry of paraffin-embedded Human colon cancer tissue using [TA350852] (ANGPT4 Antibody) at dilution 1/70 (Original magnification:  $\times 200$ )



Immunohistochemistry of paraffin-embedded Human colon cancer tissue using [TA350852] (ANGPT4 Antibody) at dilution 1/70, treated with synthetic peptide. (Original magnification:  $\times 200$ )