

## Product datasheet for **TA350849**

### ALG11 Rabbit Polyclonal Antibody

#### Product data:

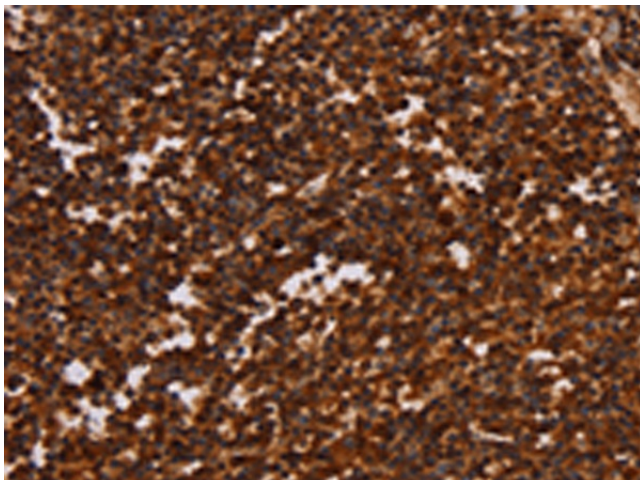
Product Type:	Primary Antibodies
Applications:	IHC
Recommended Dilution:	IHC: 100-300 Positive control: Human tonsil Predicted cell location: Cytoplasm
Reactivity:	Human, Mouse
Host:	Rabbit
Isotype:	IgG
Clonality:	Polyclonal
Immunogen:	Synthetic peptide of human ALG11
Formulation:	pH7.4 PBS, 0.05% NaN <sub>3</sub> , 40% Glycerol
Concentration:	lot specific
Purification:	Antigen affinity purification
Conjugation:	Unconjugated
Storage:	Store at -20°C as received.
Stability:	Stable for 12 months from date of receipt.
Gene Name:	ALG11, alpha-1,2-mannosyltransferase
Database Link:	<a href="#">NP_001004127</a> <a href="#">Entrez Gene 207958 Mouse</a> <a href="#">Entrez Gene 440138 Human</a> <a href="#">Q2TAA5</a>
Background:	This gene encodes a GDP-Man:Man3GlcNAc2-PP-dolichol-alpha1,2-mannosyltransferase which is localized to the cytosolic side of the endoplasmic reticulum (ER) and catalyzes the transfer of the fourth and fifth mannose residue from GDP-mannose (GDP-Man) to Man3GlcNAc2-PP-dolichol and Man4GlcNAc2-PP-dolichol resulting in the production of Man5GlcNAc2-PP-dolichol. Mutations in this gene are associated with congenital disorder of glycosylation type I <sub>p</sub> (CDGIP).
Synonyms:	CDG1P; GT8
Protein Families:	Transmembrane



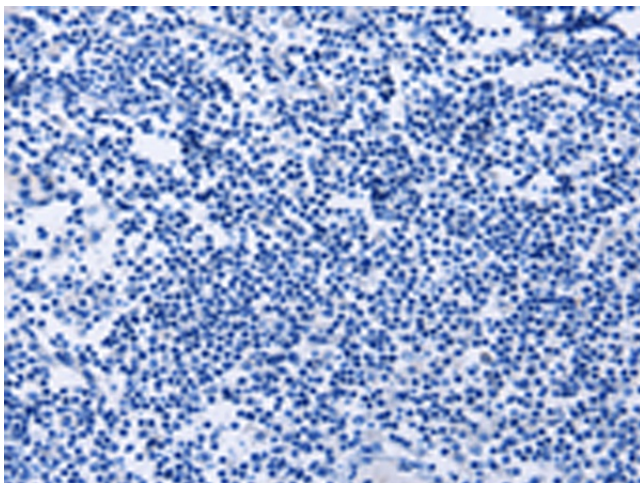
[View online »](#)

Protein Pathways: Metabolic pathways, N-Glycan biosynthesis

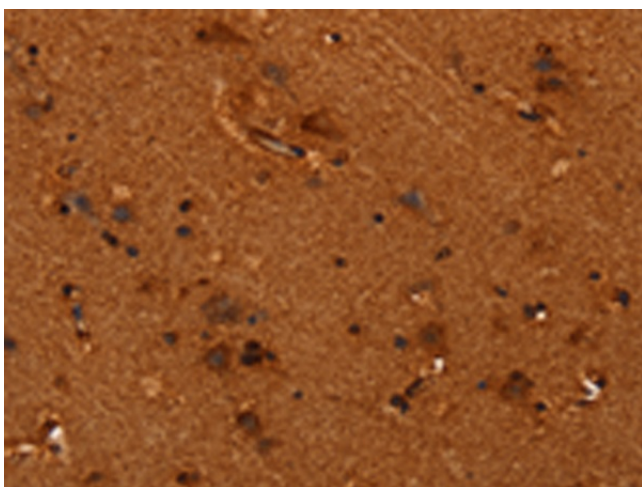
### Product images:



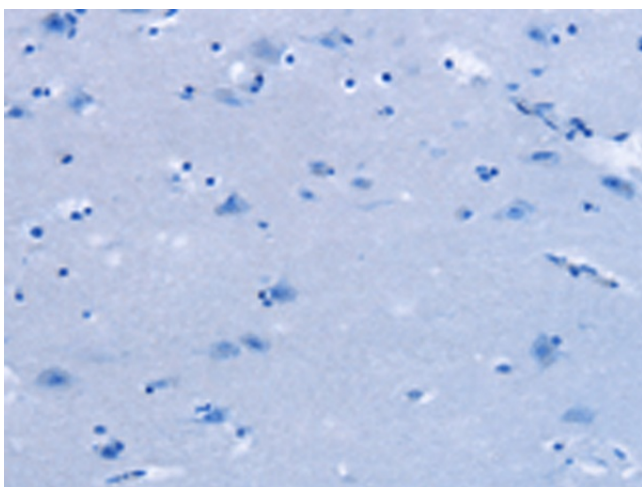
Immunohistochemistry of paraffin-embedded Human tonsil tissue using TA350849 (ALG11 Antibody) at dilution 1/40 (Original magnification: ×200)



Immunohistochemistry of paraffin-embedded Human tonsil tissue using TA350849 (ALG11 Antibody) at dilution 1/40, treated with synthetic peptide. (Original magnification: ×200)



Immunohistochemistry of paraffin-embedded Human brain tissue using TA350849 (ALG11 Antibody) at dilution 1/40 (Original magnification:  $\times 200$ )



Immunohistochemistry of paraffin-embedded Human brain tissue using TA350849 (ALG11 Antibody) at dilution 1/40, treated with synthetic peptide. (Original magnification:  $\times 200$ )