

Product datasheet for **TA350848S**

ALG6 Rabbit Polyclonal Antibody

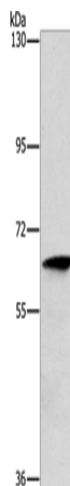
Product data:

Product Type:	Primary Antibodies
Applications:	WB
Recommended Dilution:	WB: 200-1000 WB positive control: Human lymphoma tissue
Reactivity:	Human, Mouse, Rat
Host:	Rabbit
Isotype:	IgG
Clonality:	Polyclonal
Immunogen:	Synthetic peptide of human ALG6
Formulation:	pH7.4 PBS, 0.05% NaN ₃ , 40% Glycerol
Purification:	Antigen affinity purification
Conjugation:	Unconjugated
Storage:	Store at -20°C as received.
Stability:	Stable for 12 months from date of receipt.
Predicted Protein Size:	58 kDa
Gene Name:	ALG6, alpha-1,3-glucosyltransferase
Database Link:	NP_037471 Entrez Gene 320438 Mouse Entrez Gene 362547 Rat Entrez Gene 29929 Human Q9Y672
Background:	This gene encodes a member of the ALG6/ALG8 glucosyltransferase family. The encoded protein catalyzes the addition of the first glucose residue to the growing lipid-linked oligosaccharide precursor of N-linked glycosylation. Mutations in this gene are associated with congenital disorders of glycosylation type Ic.
Synonyms:	CDG1C
Protein Families:	Druggable Genome, Transmembrane
Protein Pathways:	Metabolic pathways, N-Glycan biosynthesis



[View online »](#)

Product images:



Gel: 10%SDS-PAGE
Lysate: 40 µg
Lane: Human lymphoma tissue
Primary antibody: [TA350848] (ALG6 Antibody) at dilution 1/350
Secondary antibody: Goat anti rabbit IgG at 1/8000 dilution
Exposure time: 30 seconds