

## Product datasheet for **TA350848**

### ALG6 Rabbit Polyclonal Antibody

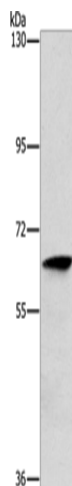
#### Product data:

Product Type:	Primary Antibodies
Applications:	WB
Recommended Dilution:	WB: 200-1000 WB positive control: Human lymphoma tissue
Reactivity:	Human, Mouse, Rat
Host:	Rabbit
Isotype:	IgG
Clonality:	Polyclonal
Immunogen:	Synthetic peptide of human ALG6
Formulation:	pH7.4 PBS, 0.05% NaN <sub>3</sub> , 40% Glycerol
Concentration:	lot specific
Purification:	Antigen affinity purification
Conjugation:	Unconjugated
Storage:	Store at -20°C as received.
Stability:	Stable for 12 months from date of receipt.
Predicted Protein Size:	58 kDa
Gene Name:	ALG6, alpha-1,3-glycosyltransferase
Database Link:	<a href="#">NP_037471</a> <a href="#">Entrez Gene 320438</a> <a href="#">MouseEntrez Gene 362547</a> <a href="#">RatEntrez Gene 29929</a> <a href="#">Human Q9Y672</a>
Background:	This gene encodes a member of the ALG6/ALG8 glucosyltransferase family. The encoded protein catalyzes the addition of the first glucose residue to the growing lipid-linked oligosaccharide precursor of N-linked glycosylation. Mutations in this gene are associated with congenital disorders of glycosylation type Ic.
Synonyms:	CDG1C
Protein Families:	Druggable Genome, Transmembrane
Protein Pathways:	Metabolic pathways, N-Glycan biosynthesis



[View online »](#)

## Product images:



Gel: 10%SDS-PAGE  
Lysate: 40  $\mu$ g  
Lane: Human lymphoma tissue  
Primary antibody: TA350848 (ALG6 Antibody) at dilution 1/350  
Secondary antibody: Goat anti rabbit IgG at 1/8000 dilution  
Exposure time: 30 seconds