

Product datasheet for **TA350842**

CD90 (THY1) Rabbit Polyclonal Antibody

Product data:

Product Type:	Primary Antibodies
Applications:	IHC
Recommended Dilution:	IHC: 25-100 Positive control: Human ovarian cancer Predicted cell location: Cytoplasm
Reactivity:	Human, Mouse, Rat
Host:	Rabbit
Isotype:	IgG
Clonality:	Polyclonal
Immunogen:	Synthetic peptide of human THY1
Formulation:	pH7.4 PBS, 0.05% NaN ₃ , 40% Glycerol
Concentration:	lot specific
Purification:	Antigen affinity purification
Conjugation:	Unconjugated
Storage:	Store at -20°C as received.
Stability:	Stable for 12 months from date of receipt.
Gene Name:	Thy-1 cell surface antigen
Database Link:	NP_006279 Entrez Gene 21838 Mouse Entrez Gene 24832 Rat Entrez Gene 7070 Human P04216

Background: Thy-1 or CD90 (Cluster of Differentiation 90) is a 25?37 kDa heavily N-glycosylated, glyphosphatidylinositol(GPI) anchored conserved cell surface protein with a single V-like immunoglobulin domain, originally discovered as a thymocyte antigen. Thy-1 can be used as a marker for a variety of stem cells and for the axonal processes of mature neurons. Structural study of Thy-1 lead to the foundation of the Immunoglobulin superfamily, of which it is the smallest member, and led to some of the initial biochemical description and characterization of a vertebrate GPI anchor and also the first demonstration of tissue specific differential glycosylation.



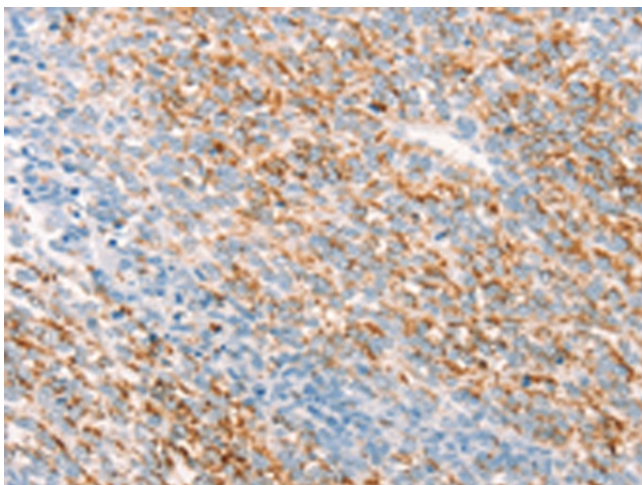
[View online »](#)

Synonyms: CD90; CDw90

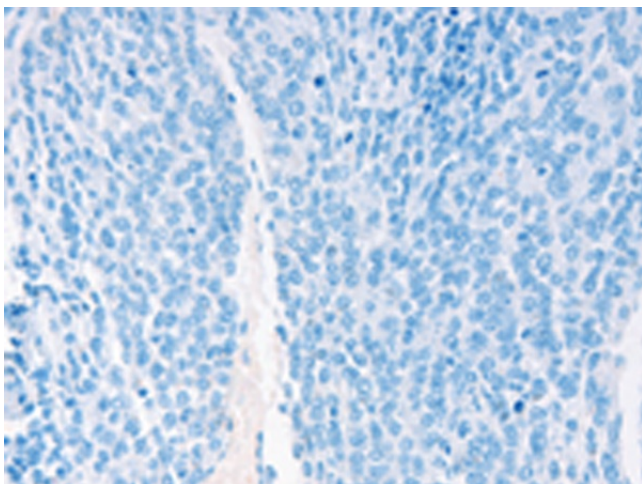
Protein Families: ES Cell Differentiation/IPS

Protein Pathways: Leukocyte transendothelial migration

Product images:



Immunohistochemistry of paraffin-embedded Human ovarian cancer tissue using TA350842 (THY1 Antibody) at dilution 1/25 (Original magnification: ×200)



Immunohistochemistry of paraffin-embedded Human ovarian cancer tissue using TA350842 (THY1 Antibody) at dilution 1/25, treated with synthetic peptide. (Original magnification: ×200)