

## Product datasheet for **TA350835**

### PSMD11 Rabbit Polyclonal Antibody

#### Product data:

Product Type:	Primary Antibodies
Applications:	WB
Recommended Dilution:	ELISA: 2000-5000, WB: 500-2000
Reactivity:	Human, Mouse, Rat
Host:	Rabbit
Isotype:	IgG
Clonality:	Polyclonal
Immunogen:	Synthetic peptide of human PSMD11
Formulation:	pH7.4 PBS, 0.05% NaN <sub>3</sub> , 40% Glycerol
Concentration:	lot specific
Purification:	Antigen affinity purification
Conjugation:	Unconjugated
Storage:	Store at -20°C as received.
Stability:	Stable for 12 months from date of receipt.
Predicted Protein Size:	47 kDa
Gene Name:	proteasome 26S subunit, non-ATPase 11
Database Link:	<a href="#">NP_002806</a> <a href="#">Entrez Gene 69077</a> <a href="#">MouseEntrez Gene 303353</a> <a href="#">RatEntrez Gene 5717</a> <a href="#">Human O00231</a>
Background:	The 26S proteasome is a multicatalytic proteinase complex with a highly ordered structure composed of 2 complexes, a 20S core and a 19S regulator. The 20S core is composed of 4 rings of 28 non-identical subunits; 2 rings are composed of 7 alpha subunits and 2 rings are composed of 7 beta subunits. The 19S regulator is composed of a base, which contains 6 ATPase subunits and 2 non-ATPase subunits, and a lid, which contains up to 10 non-ATPase subunits. Proteasomes are distributed throughout eukaryotic cells at a high concentration and cleave peptides in an ATP/ubiquitin-dependent process in a non-lysosomal pathway.
Synonyms:	p44.5; Rpn6; S9

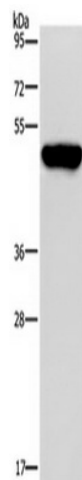


[View online »](#)

Protein Families: Stem cell - Pluripotency

Protein Pathways: Proteasome

### Product images:



Gel: 8%SDS-PAGE, Lysate: 40 ug, Lane: Mouse kidney tissue, Primary antibody: (PSMD11 Antibody) at dilution 1/200, Secondary antibody: Goat anti rabbit IgG at 1/8000 dilution, Exposure time: 1 minute