

## Product datasheet for **TA350831**

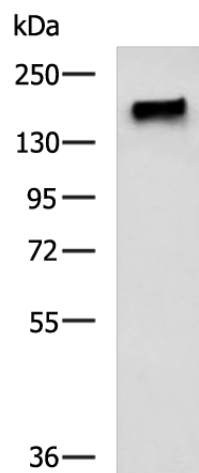
### **PALB2 Rabbit Polyclonal Antibody**

#### **Product data:**

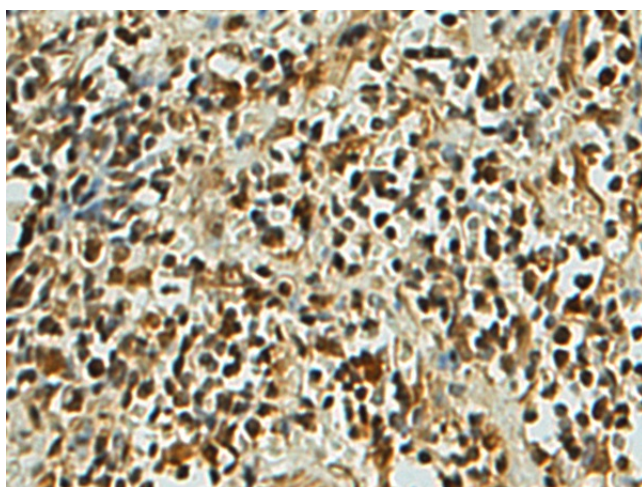
Product Type:	Primary Antibodies
Applications:	IHC, WB
Recommended Dilution:	WB: 1000-5000 WB positive control: Hela cell lysate IHC: 100-300 Positive control: Human esophagus cancer Predicted cell location: Nucleus
Reactivity:	Human, Mouse
Host:	Rabbit
Isotype:	IgG
Clonality:	Polyclonal
Immunogen:	Synthetic peptide of human PALB2
Formulation:	pH7.4 PBS, 0.05% NaN <sub>3</sub> , 40% Glycerol
Concentration:	lot specific
Purification:	Antigen affinity purification
Conjugation:	Unconjugated
Storage:	Store at -20°C as received.
Stability:	Stable for 12 months from date of receipt.
Gene Name:	partner and localizer of BRCA2
Database Link:	<a href="#">NP_078951</a> <a href="#">Entrez Gene 233826</a> <a href="#">MouseEntrez Gene 79728</a> <a href="#">Human Q86YC2</a>
Background:	This gene encodes a protein that may function in tumor suppression. This protein binds to and colocalizes with the breast cancer 2 early onset protein (BRCA2) in nuclear foci and likely permits the stable intranuclear localization and accumulation of BRCA2.
Synonyms:	FANCN; PNCA3



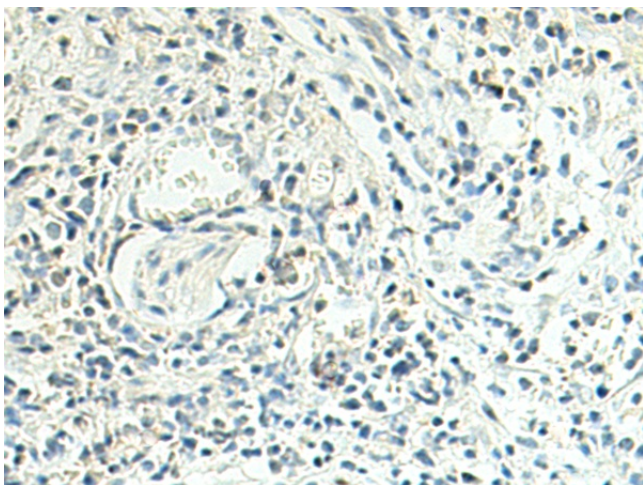
[View online »](#)

**Product images:**

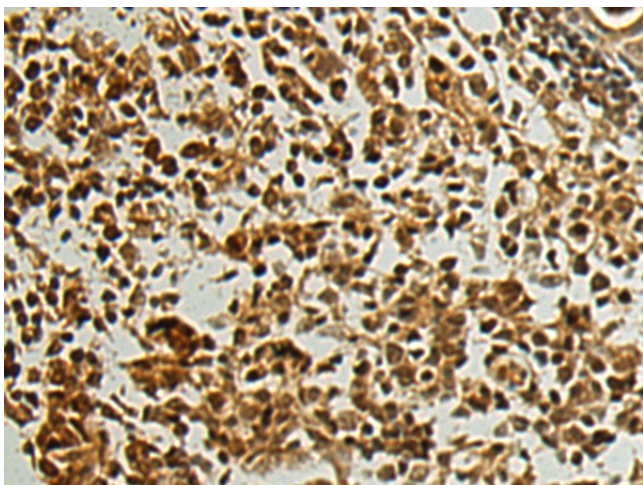
Gel: 6%SDS-PAGE  
Lysate: 40  $\mu$ g  
Lane: HeLa cell lysate  
Primary antibody: TA350831 (PALB2 Antibody) at dilution 1/1600  
Secondary antibody: Goat anti rabbit IgG at 1/5000 dilution  
Exposure time: 1 minute



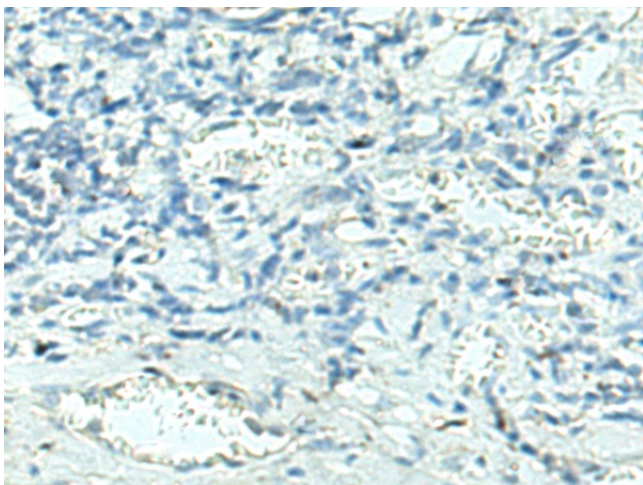
Immunohistochemistry of paraffin-embedded Human esophagus cancer tissue using TA350831 (PALB2 Antibody) at dilution 1/115 (Original magnification:  $\times$ 200)



Immunohistochemistry of paraffin-embedded Human esophagus cancer tissue using TA350831 (PALB2 Antibody) at dilution 1/115, treated with synthetic peptide. (Original magnification:  $\times 200$ )



Immunohistochemistry of paraffin-embedded Human thyroid cancer tissue using TA350831 (PALB2 Antibody) at dilution 1/115 (Original magnification:  $\times 200$ )



Immunohistochemistry of paraffin-embedded Human thyroid cancer tissue using TA350831 (PALB2 Antibody) at dilution 1/115, treated with synthetic peptide. (Original magnification:  $\times 200$ )