

## Product datasheet for **TA350830S**

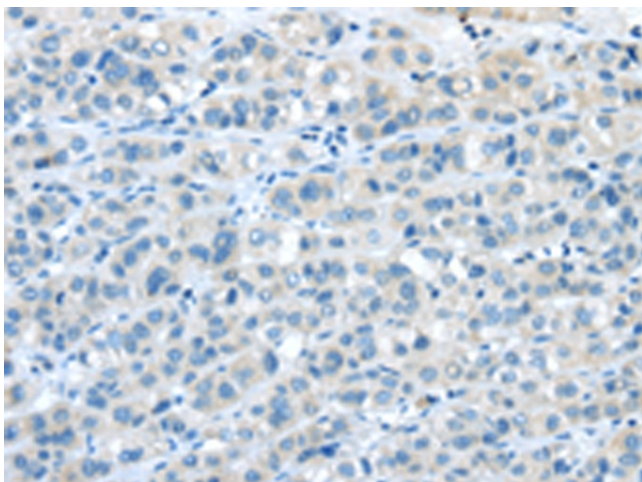
### NPY4R Rabbit Polyclonal Antibody

#### Product data:

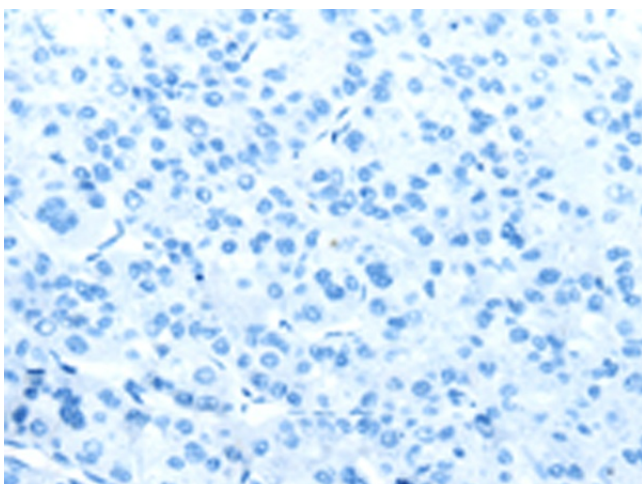
Product Type:	Primary Antibodies
Applications:	IHC
Recommended Dilution:	IHC: 25-100 Positive control: Human liver cancer Predicted cell location: Cytoplasm and Cell membrane
Reactivity:	Human
Host:	Rabbit
Isotype:	IgG
Clonality:	Polyclonal
Immunogen:	Synthetic peptide of human NPY4R
Formulation:	pH7.4 PBS, 0.05% NaN <sub>3</sub> , 40% Glycerol
Purification:	Antigen affinity purification
Conjugation:	Unconjugated
Storage:	Store at -20°C as received.
Stability:	Stable for 12 months from date of receipt.
Gene Name:	neuropeptide Y receptor Y4
Database Link:	<a href="#">NP_001265723</a> <a href="#">Entrez Gene 5540 Human P50391</a>
Background:	NPY4-R is expressed in several human tissues, including brain, coronary artery, and ileum. NPY4-R maps to human chromosome 10q11.2. NPY4R belongs to the Neuropeptide Receptor GPCR Family and may regulate central nervous system, cardiovascular, and gastrointestinal function.
Synonyms:	NPY4-R; PP1; PPYR1; Y4
Protein Families:	Druggable Genome, GPCR, Transmembrane
Protein Pathways:	Neuroactive ligand-receptor interaction



[View online »](#)

**Product images:**

Immunohistochemistry of paraffin-embedded Human liver cancer tissue using [TA350830] (NPY4R Antibody) at dilution 1/30 (Original magnification:  $\times 200$ )



Immunohistochemistry of paraffin-embedded Human liver cancer tissue using [TA350830] (NPY4R Antibody) at dilution 1/30, treated with synthetic peptide. (Original magnification:  $\times 200$ )