

Product datasheet for **TA350823**

CDC25B Rabbit Polyclonal Antibody

Product data:

Product Type:	Primary Antibodies
Applications:	IHC, WB
Recommended Dilution:	WB: 200-1000 WB positive control: RAW264.7 cells IHC: 50-200 Positive control: Human thyroid cancer Predicted cell location: Cytoplasm
Reactivity:	Human, Mouse
Host:	Rabbit
Isotype:	IgG
Clonality:	Polyclonal
Immunogen:	Synthetic peptide of human CDC25B
Formulation:	pH7.4 PBS, 0.05% NaN ₃ , 40% Glycerol
Concentration:	lot specific
Purification:	Antigen affinity purification
Conjugation:	Unconjugated
Storage:	Store at -20°C as received.
Stability:	Stable for 12 months from date of receipt.
Predicted Protein Size:	65 kDa
Gene Name:	cell division cycle 25B
Database Link:	NP_068659 Entrez Gene 12531 Mouse Entrez Gene 994 Human P30305



[View online »](#)

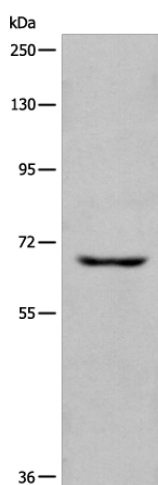
Background: CDC25B is a member of the CDC25 family of phosphatases. CDC25B activates the cyclin dependent kinase CDC2 by removing two phosphate groups and it is required for entry into mitosis. CDC25B shuttles between the nucleus and the cytoplasm due to nuclear localization and nuclear export signals. The protein is nuclear in the M and G1 phases of the cell cycle and moves to the cytoplasm during S and G2. CDC25B has oncogenic properties, although its role in tumor formation has not been determined. Multiple transcript variants for this gene exist.

Synonyms: cell division cycle 25 homolog B (*S. pombe*); cell division cycle 25B; OTTHUMP00000030137; OTTHUMP00000030138; OTTHUMP00000030139

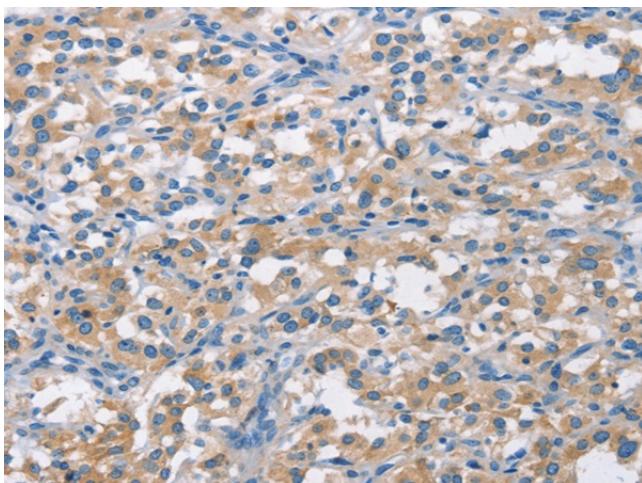
Protein Families: Druggable Genome, Phosphatase

Protein Pathways: Cell cycle, MAPK signaling pathway, Progesterone-mediated oocyte maturation

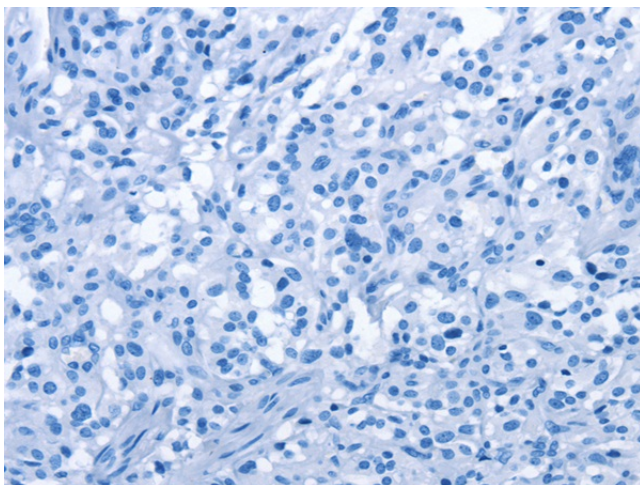
Product images:



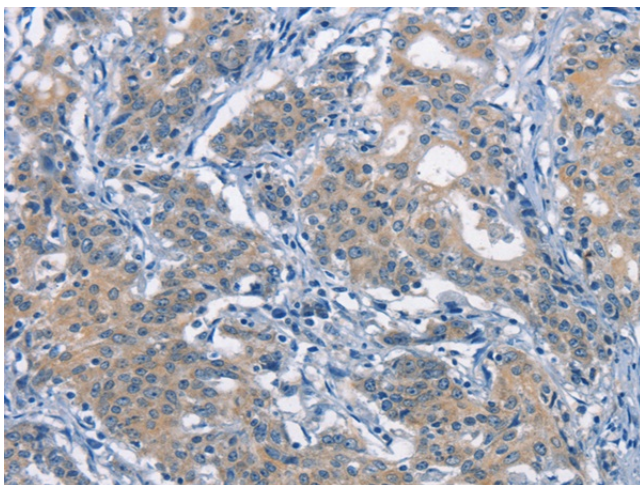
Gel: 6%SDS-PAGE
Lysate: 40 µg
Lane: RAW264.7 cells
Primary antibody: TA350823 (CDC25B Antibody) at dilution 1/250
Secondary antibody: Goat anti rabbit IgG at 1/8000 dilution
Exposure time: 20 seconds



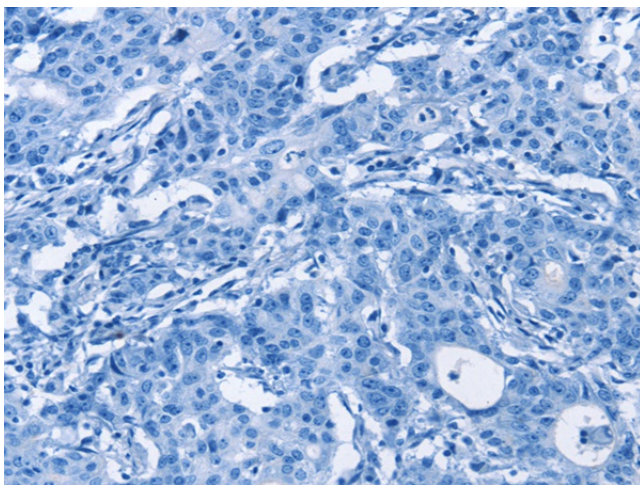
Immunohistochemistry of paraffin-embedded Human thyroid cancer tissue using TA350823 (CDC25B Antibody) at dilution 1/50 (Original magnification: ×200)



Immunohistochemistry of paraffin-embedded Human thyroid cancer tissue using TA350823 (CDC25B Antibody) at dilution 1/50, treated with synthetic peptide. (Original magnification: ×200)



Immunohistochemistry of paraffin-embedded Human gastric cancer tissue using TA350823 (CDC25B Antibody) at dilution 1/50 (Original magnification: ×200)



Immunohistochemistry of paraffin-embedded Human gastric cancer tissue using TA350823 (CDC25B Antibody) at dilution 1/50, treated with synthetic peptide. (Original magnification: ×200)