

Product datasheet for **TA350822**

CDC25A Rabbit Polyclonal Antibody

Product data:

Product Type:	Primary Antibodies
Applications:	IHC, WB
Recommended Dilution:	WB: 200-1000 WB positive control: 231 and A549 cells IHC: 50-200 Positive control: Human gastric cancer Predicted cell location: Cytoplasm
Reactivity:	Human, Mouse, Rat
Host:	Rabbit
Isotype:	IgG
Clonality:	Polyclonal
Immunogen:	Synthetic peptide of human CDC25A
Formulation:	pH7.4 PBS, 0.05% NaN ₃ , 40% Glycerol
Concentration:	lot specific
Purification:	Antigen affinity purification
Conjugation:	Unconjugated
Storage:	Store at -20°C as received.
Stability:	Stable for 12 months from date of receipt.
Predicted Protein Size:	59 kDa
Gene Name:	cell division cycle 25A
Database Link:	NP_963861 Entrez Gene 12530 Mouse Entrez Gene 171102 Rat Entrez Gene 993 Human P30304



[View online »](#)

Background:

CDC25A is a member of the CDC25 family of phosphatases. CDC25A is required for progression from G1 to the S phase of the cell cycle. It activates the cyclin-dependent kinase CDC2 by removing two phosphate groups. CDC25A is specifically degraded in response to DNA damage, which prevents cells with chromosomal abnormalities from progressing through cell division. CDC25A is an oncogene, although its exact role in oncogenesis has not been demonstrated. Two transcript variants encoding different isoforms have been found for this gene.

Synonyms:

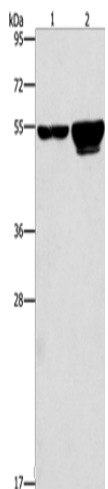
CDC25A2

Protein Families:

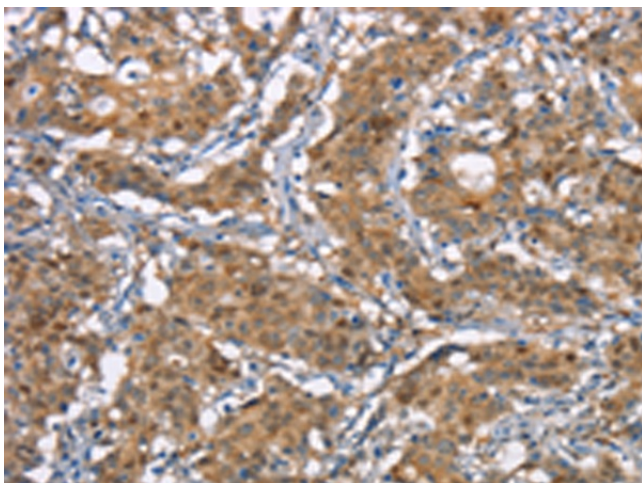
Druggable Genome, Phosphatase

Protein Pathways:

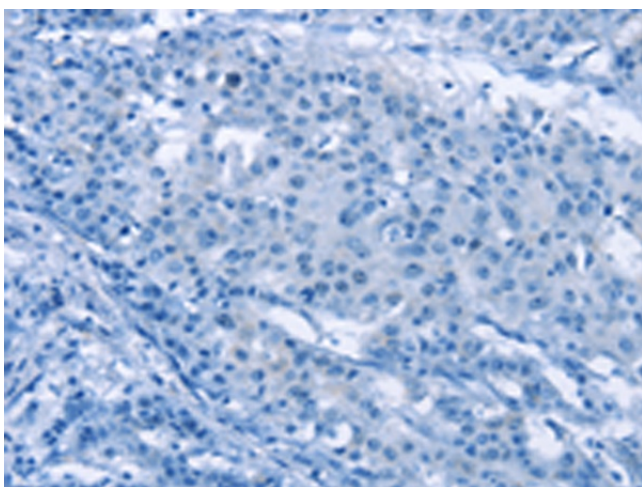
Cell cycle, Progesterone-mediated oocyte maturation

Product images:

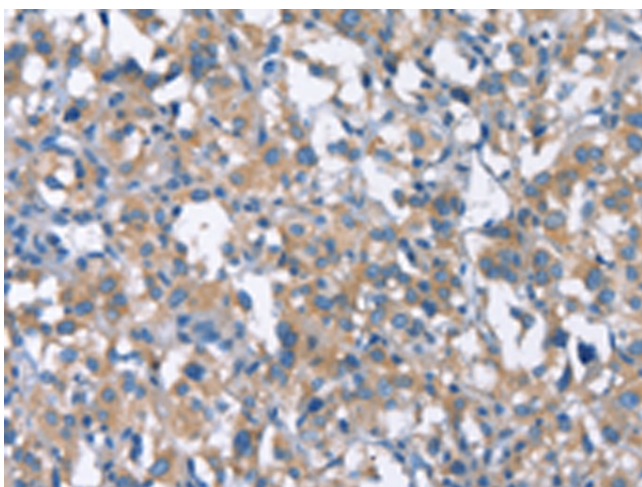
Gel: 6%SDS-PAGE
Lysate: 40 μ g
Lane 1-2: 231 cells
A549 cells
Primary antibody: TA350822 (CDC25A Antibody)
at dilution 1/300
Secondary antibody: Goat anti rabbit IgG at
1/8000 dilution
Exposure time: 20 seconds



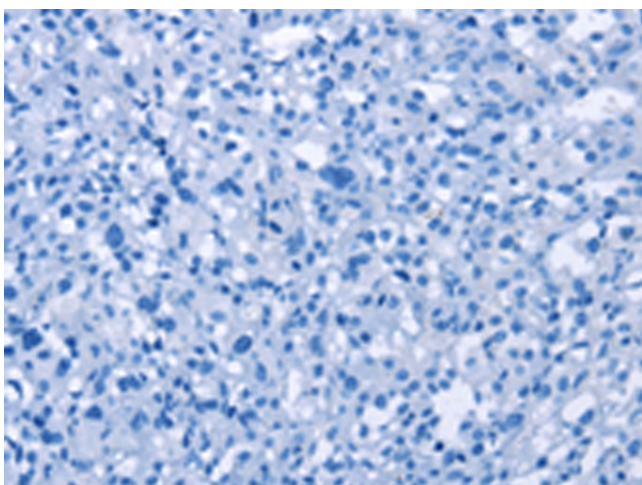
Immunohistochemistry of paraffin-embedded
Human gastric cancer tissue using TA350822
(CDC25A Antibody) at dilution 1/50 (Original
magnification: \times 200)



Immunohistochemistry of paraffin-embedded Human gastric cancer tissue using TA350822 (CDC25A Antibody) at dilution 1/50, treated with synthetic peptide. (Original magnification: ×200)



Immunohistochemistry of paraffin-embedded Human thyroid cancer tissue using TA350822 (CDC25A Antibody) at dilution 1/50 (Original magnification: ×200)



Immunohistochemistry of paraffin-embedded Human thyroid cancer tissue using TA350822 (CDC25A Antibody) at dilution 1/50, treated with synthetic peptide. (Original magnification: ×200)