

## Product datasheet for **TA350821**

### CDC23 Rabbit Polyclonal Antibody

#### Product data:

Product Type:	Primary Antibodies
Applications:	IHC, WB
Recommended Dilution:	WB: 200-1000 WB positive control: RAW264.7 and hepG2 cells IHC: 50-200 Positive control: Human thyroid cancer Predicted cell location: Cytoplasm
Reactivity:	Human, Mouse
Host:	Rabbit
Isotype:	IgG
Clonality:	Polyclonal
Immunogen:	Synthetic peptide of human CDC23
Formulation:	pH7.4 PBS, 0.05% NaN <sub>3</sub> , 40% Glycerol
Concentration:	lot specific
Purification:	Antigen affinity purification
Conjugation:	Unconjugated
Storage:	Store at -20°C as received.
Stability:	Stable for 12 months from date of receipt.
Predicted Protein Size:	69 kDa
Gene Name:	cell division cycle 23
Database Link:	<a href="#">NP_004652</a> <a href="#">Entrez Gene 52563 Mouse</a> <a href="#">Entrez Gene 8697 Human</a> <a href="#">Q9UJX2</a>



[View online »](#)

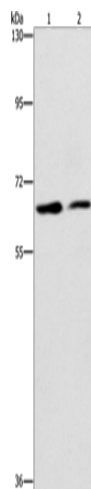
**Background:** The protein encoded by this gene shares strong similarity with *Saccharomyces cerevisiae* Cdc23, a protein essential for cell cycle progression through the G2/M transition. This protein is a component of anaphase-promoting complex (APC), which is composed of eight protein subunits and highly conserved in eukaryotic cells. APC catalyzes the formation of cyclin B-ubiquitin conjugate that is responsible for the ubiquitin-mediated proteolysis of B-type cyclins.

**Synonyms:** ANAPC8; APC8; CUT23

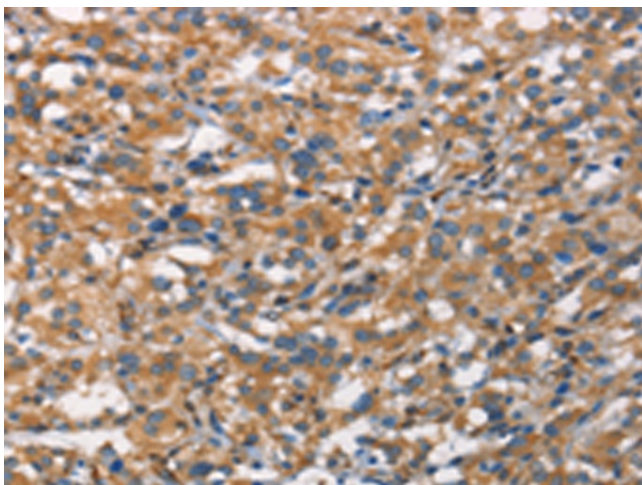
**Protein Families:** Druggable Genome

**Protein Pathways:** Cell cycle, Oocyte meiosis, Progesterone-mediated oocyte maturation, Ubiquitin mediated proteolysis

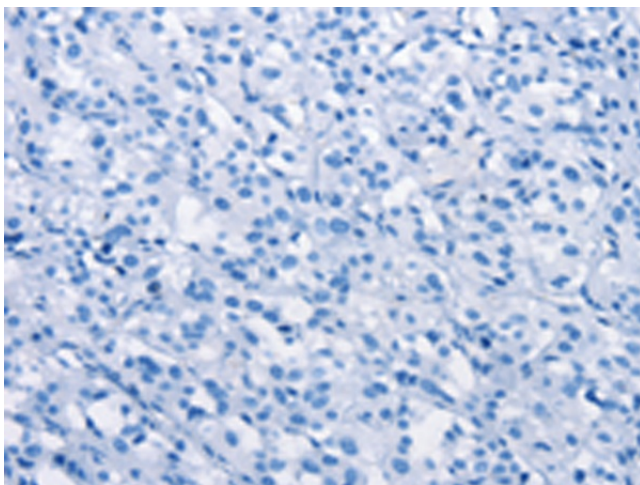
### Product images:



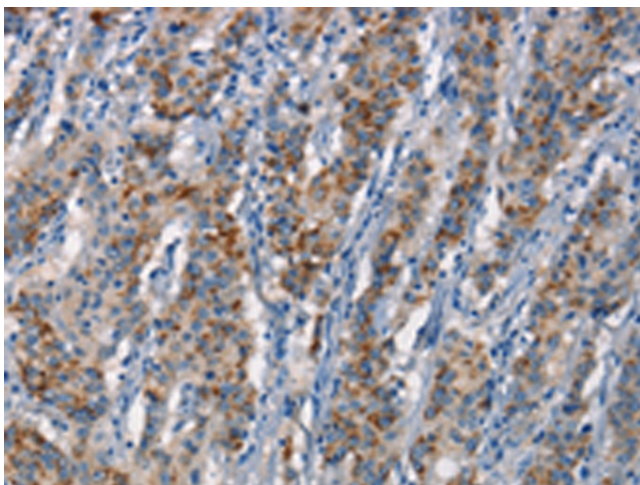
Gel: 6%SDS-PAGE  
Lysate: 40 µg  
Lane 1-2: RAW264.7  
hepG2 cells  
Primary antibody: TA350821 (CDC23 Antibody) at dilution 1/200  
Secondary antibody: Goat anti rabbit IgG at 1/8000 dilution  
Exposure time: 40 seconds



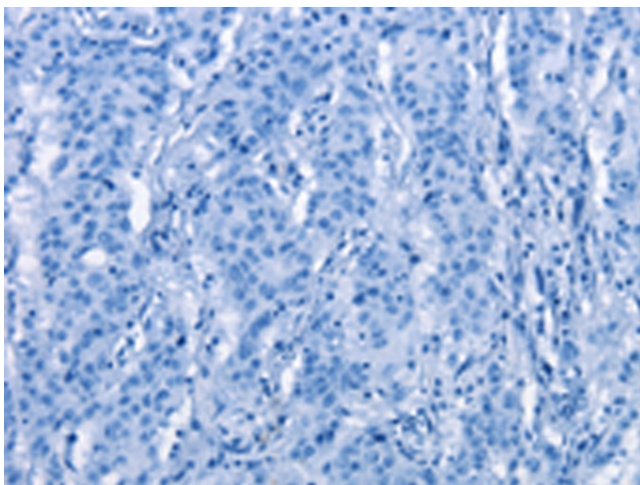
Immunohistochemistry of paraffin-embedded Human thyroid cancer tissue using TA350821 (CDC23 Antibody) at dilution 1/70 (Original magnification: ×200)



Immunohistochemistry of paraffin-embedded Human thyroid cancer tissue using TA350821 (CDC23 Antibody) at dilution 1/70, treated with synthetic peptide. (Original magnification:  $\times 200$ )



Immunohistochemistry of paraffin-embedded Human gastric cancer tissue using TA350821 (CDC23 Antibody) at dilution 1/70 (Original magnification:  $\times 200$ )



Immunohistochemistry of paraffin-embedded Human gastric cancer tissue using TA350821 (CDC23 Antibody) at dilution 1/70, treated with synthetic peptide. (Original magnification:  $\times 200$ )