

## Product datasheet for **TA350800**

### BCR Rabbit Polyclonal Antibody

#### Product data:

Product Type:	Primary Antibodies
Applications:	IHC
Recommended Dilution:	IHC: 25-100 Positive control: Human gastric cancer Predicted cell location: Cytoplasm
Reactivity:	Human, Mouse
Host:	Rabbit
Isotype:	IgG
Clonality:	Polyclonal
Immunogen:	Synthetic peptide of human BCR
Formulation:	pH7.4 PBS, 0.05% NaN <sub>3</sub> , 40% Glycerol
Concentration:	lot specific
Purification:	Antigen affinity purification
Conjugation:	Unconjugated
Storage:	Store at -20°C as received.
Stability:	Stable for 12 months from date of receipt.
Gene Name:	BCR, RhoGEF and GTPase activating protein
Database Link:	<a href="#">NP_067585</a> <a href="#">Entrez Gene 110279 Mouse</a> <a href="#">Entrez Gene 613 Human</a> <a href="#">P11274</a>

**Background:** A reciprocal translocation between chromosomes 22 and 9 produces the Philadelphia chromosome, which is often found in patients with chronic myelogenous leukemia. The chromosome 22 breakpoint for this translocation is located within the BCR gene. The translocation produces a fusion protein which is encoded by sequence from both BCR and ABL, the gene at the chromosome 9 breakpoint. Although the BCR-ABL fusion protein has been extensively studied, the function of the normal BCR gene product is not clear. The protein has serine/threonine kinase activity and is a GTPase-activating protein for p21<sup>rac</sup>. Two transcript variants encoding different isoforms have been found for this gene.



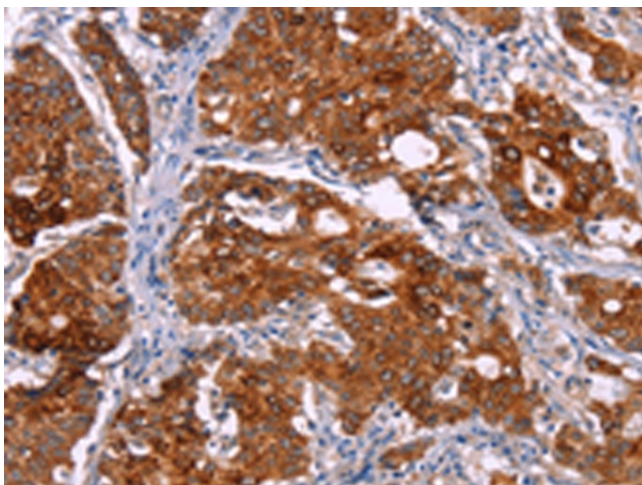
[View online »](#)

**Synonyms:** ALL; BCR1; CML; D22S11; D22S662; PHL

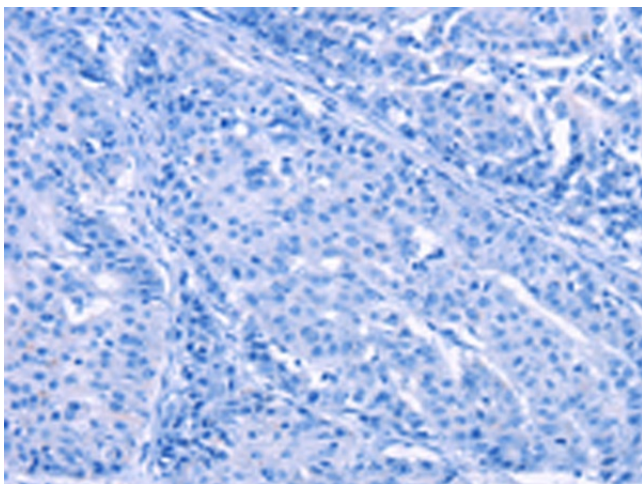
**Protein Families:** Druggable Genome, Protein Kinase

**Protein Pathways:** Chronic myeloid leukemia, Pathways in cancer

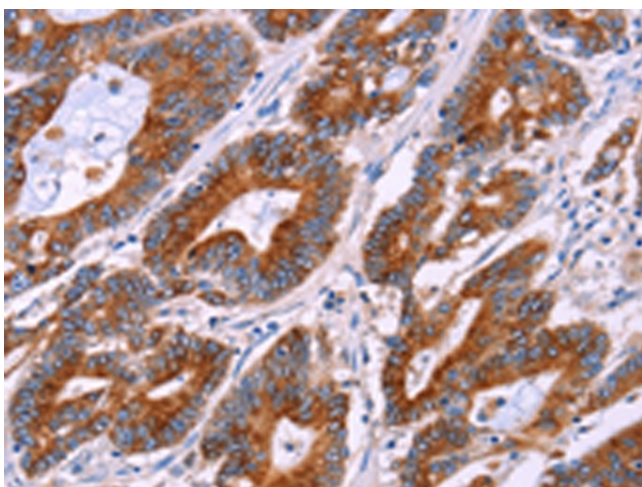
**Product images:**



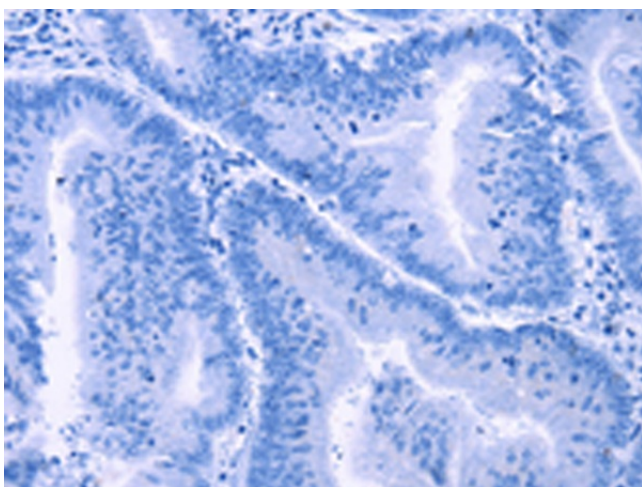
Immunohistochemistry of paraffin-embedded Human gastric cancer tissue using TA350800 (BCR Antibody) at dilution 1/15 (Original magnification:  $\times 200$ )



Immunohistochemistry of paraffin-embedded Human gastric cancer tissue using TA350800 (BCR Antibody) at dilution 1/15, treated with synthetic peptide. (Original magnification:  $\times 200$ )



Immunohistochemistry of paraffin-embedded Human colon cancer tissue using TA350800 (BCR Antibody) at dilution 1/15 (Original magnification: ×200)



Immunohistochemistry of paraffin-embedded Human colon cancer tissue using TA350800 (BCR Antibody) at dilution 1/15, treated with synthetic peptide. (Original magnification: ×200)