

## Product datasheet for **TA350797S**

### **BCL3 Rabbit Polyclonal Antibody**

#### **Product data:**

Product Type:	Primary Antibodies
Applications:	IHC, WB
Recommended Dilution:	WB: 200-1000 WB positive control: A549 and hela cells IHC: 25-100 Positive control: Human gastric cancer Predicted cell location: Cytoplasm
Reactivity:	Human, Mouse
Host:	Rabbit
Isotype:	IgG
Clonality:	Polyclonal
Immunogen:	Synthetic peptide of human BCL3
Formulation:	pH7.4 PBS, 0.05% NaN <sub>3</sub> , 40% Glycerol
Purification:	Antigen affinity purification
Conjugation:	Unconjugated
Storage:	Store at -20°C as received.
Stability:	Stable for 12 months from date of receipt.
Predicted Protein Size:	48 kDa
Gene Name:	B-cell CLL/lymphoma 3
Database Link:	<a href="#">NP_005169</a> <a href="#">Entrez Gene 602 Human P20749</a>



[View online »](#)

**Background:**

This gene is a proto-oncogene candidate. It is identified by its translocation into the immunoglobulin alpha-locus in some cases of B-cell leukemia. The protein encoded by this gene contains seven ankyrin repeats, which are most closely related to those found in I kappa B proteins. This protein functions as a transcriptional co-activator that activates through its association with NF-kappa B homodimers. The expression of this gene can be induced by NF-kappa B, which forms a part of the autoregulatory loop that controls the nuclear residence of p50 NF-kappa B.

**Synonyms:**

BCL4; D19S37

**Protein Families:**

Druggable Genome, Transcription Factors

**Product images:**

Gel: 8%SDS-PAGE

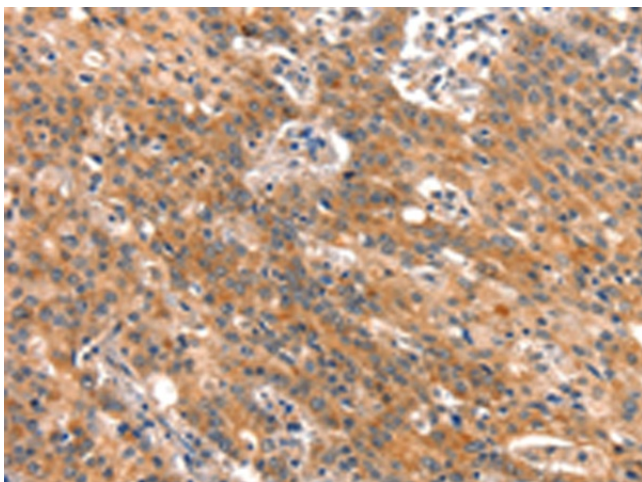
Lysate: 40 µg

Lane 1-2: A549 cells  
hela cells

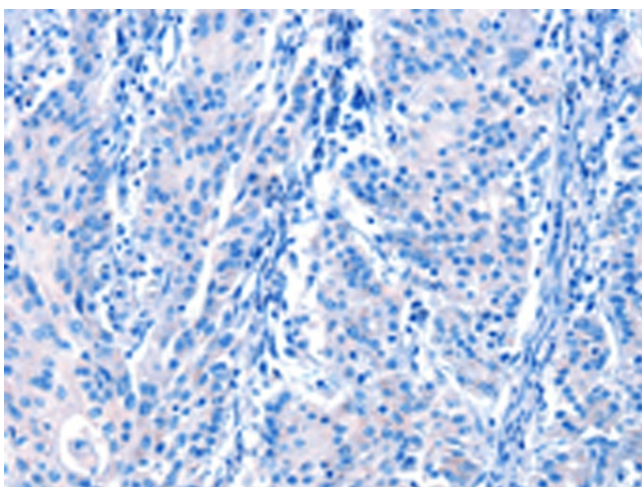
Primary antibody: [TA350797] (BCL3 Antibody) at  
dilution 1/333

Secondary antibody: Goat anti rabbit IgG at  
1/8000 dilution

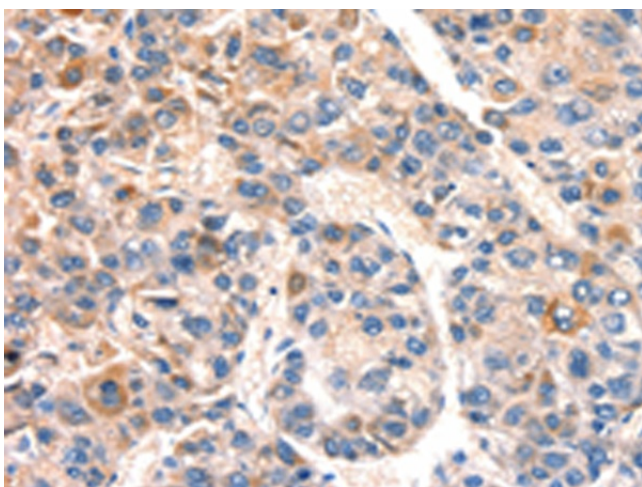
Exposure time: 10 minutes



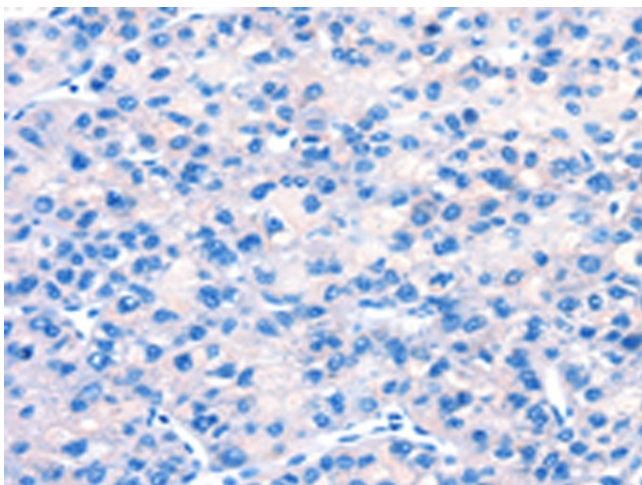
Immunohistochemistry of paraffin-embedded  
Human gastric cancer tissue using [TA350797]  
(BCL3 Antibody) at dilution 1/15 (Original  
magnification: ×200)



Immunohistochemistry of paraffin-embedded Human gastric cancer tissue using [TA350797] (BCL3 Antibody) at dilution 1/15, treated with synthetic peptide. (Original magnification: ×200)



Immunohistochemistry of paraffin-embedded Human liver cancer tissue using [TA350797] (BCL3 Antibody) at dilution 1/15 (Original magnification: ×200)



Immunohistochemistry of paraffin-embedded Human liver cancer tissue using [TA350797] (BCL3 Antibody) at dilution 1/15, treated with synthetic peptide. (Original magnification: ×200)