

Product datasheet for **TA350794**

BAT3 (BAG6) Rabbit Polyclonal Antibody

Product data:

Product Type:	Primary Antibodies
Applications:	WB
Recommended Dilution:	WB: 200-1000 WB positive control: A375, 293T and hepG2 cells
Reactivity:	Human, Mouse, Rat
Host:	Rabbit
Isotype:	IgG
Clonality:	Polyclonal
Immunogen:	Synthetic peptide of human BAG6
Formulation:	pH7.4 PBS, 0.05% NaN ₃ , 40% Glycerol
Concentration:	lot specific
Purification:	Antigen affinity purification
Conjugation:	Unconjugated
Storage:	Store at -20°C as received.
Stability:	Stable for 12 months from date of receipt.
Predicted Protein Size:	119 kDa
Gene Name:	BCL2 associated athanogene 6
Database Link:	NP_001092004 Entrez Gene 7917 Human P46379

Background: This gene was first characterized as part of a cluster of genes located within the human major histocompatibility complex class III region. This gene encodes a nuclear protein that is cleaved by caspase 3 and is implicated in the control of apoptosis. In addition, the protein forms a complex with E1A binding protein p300 and is required for the acetylation of p53 in response to DNA damage. Multiple transcript variants encoding different isoforms have been found for this gene.

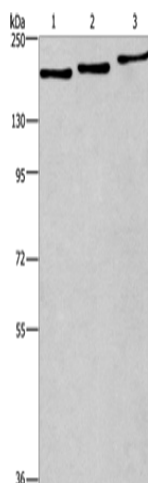
Synonyms: BAG-6; BAT3; D6S52E; G3



[View online »](#)

Protein Families: Druggable Genome, Stem cell - Pluripotency

Product images:



Gel: 6%SDS-PAGE
Lysate: 40 μ g
Lane 1-3: A375 cells
293T cells
hepG2 cells
Primary antibody: TA350794 (BAG6 Antibody) at dilution 1/300
Secondary antibody: Goat anti rabbit IgG at 1/8000 dilution
Exposure time: 5 minutes