

Product datasheet for **TA350793**

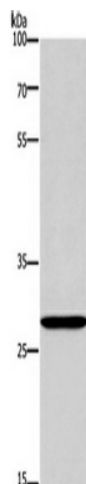
ANP32C Rabbit Polyclonal Antibody

Product data:

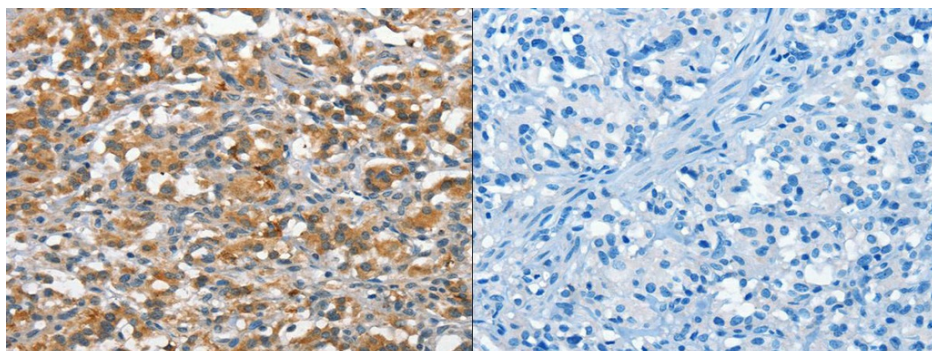
Product Type:	Primary Antibodies
Applications:	IHC, WB
Recommended Dilution:	ELISA: 1000-2000, WB: 500-2000, IHC: 15-50
Reactivity:	Human
Host:	Rabbit
Isotype:	IgG
Clonality:	Polyclonal
Immunogen:	Synthetic peptide of human ANP32C
Formulation:	pH7.4 PBS, 0.05% NaN ₃ , 40% Glycerol
Concentration:	lot specific
Purification:	Antigen affinity purification
Conjugation:	Unconjugated
Storage:	Store at -20°C as received.
Stability:	Stable for 12 months from date of receipt.
Predicted Protein Size:	27 kDa
Gene Name:	acidic nuclear phosphoprotein 32 family member C
Database Link:	NP_036535 Entrez Gene 23520 Human O43423
Background:	Phosphoprotein 32 (PP32) is a tumor suppressor that can inhibit several types of cancers, including prostate and breast cancers. The protein encoded by this gene is one of at least two proteins that are similar in amino acid sequence to PP32 and are part of the same acidic nuclear phosphoprotein gene family. However, unlike PP32, the encoded protein is tumorigenic. The tumor suppressor function of PP32 has been localized to a 25 amino acid region that is divergent between PP32 and the protein encoded by this gene. This gene does not contain introns.
Synonyms:	PP32R1



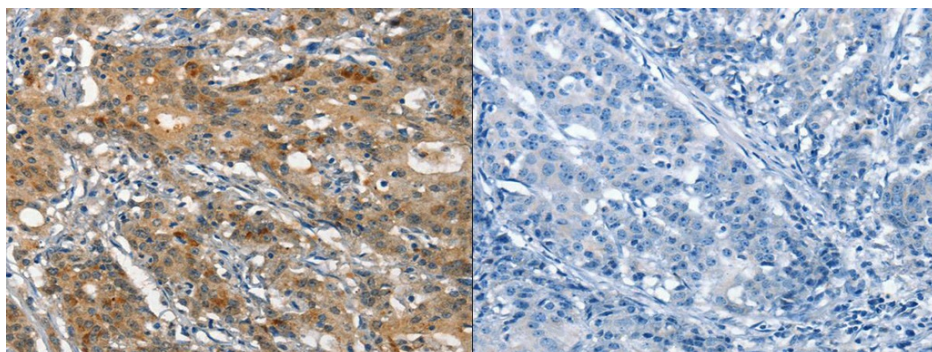
[View online »](#)

Product images:

Gel: 8%SDS-PAGE, Lysate: 40 ug, Lane: Raji cells, Primary antibody: (ANP32C Antibody) at dilution 1/400, Secondary antibody: Goat anti rabbit IgG at 1/8000 dilution, Exposure time: 20 seconds



The image on the left is immunohistochemistry of paraffin-embedded Human thyroid cancer tissue using (ANP32C Antibody) at dilution 1/15, on the right is treated with synthetic peptide. (Original magnification: $\times 200$)



The image on the left is immunohistochemistry of paraffin-embedded Human gastric cancer tissue using (ANP32C Antibody) at dilution 1/15, on the right is treated with synthetic peptide. (Original magnification: $\times 200$)