

## Product datasheet for **TA350792S**

### AIMP2 Rabbit Polyclonal Antibody

#### Product data:

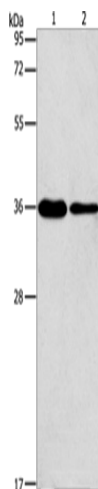
Product Type:	Primary Antibodies
Applications:	IHC, WB
Recommended Dilution:	WB: 200-1000 WB positive control: A549 and NIH/3T3 cells IHC: 25-100 Positive control: Human liver cancer Predicted cell location: Cytoplasm
Reactivity:	Human, Mouse, Rat
Host:	Rabbit
Isotype:	IgG
Clonality:	Polyclonal
Immunogen:	Synthetic peptide of human AIMP2
Formulation:	pH7.4 PBS, 0.05% NaN <sub>3</sub> , 40% Glycerol
Purification:	Antigen affinity purification
Conjugation:	Unconjugated
Storage:	Store at -20°C as received.
Stability:	Stable for 12 months from date of receipt.
Predicted Protein Size:	35 kDa
Gene Name:	aminoacyl tRNA synthetase complex interacting multifunctional protein 2
Database Link:	<a href="#">NP_006294</a> <a href="#">Entrez Gene 231872</a> <a href="#">MouseEntrez Gene 288480</a> <a href="#">RatEntrez Gene 7965</a> <a href="#">Human Q13155</a>
Background:	The JTV1 gene is located on chromosome 7p22 flanked by two genes, HRI and PMS2. JTV1 and HRI overlap slightly and are arranged in a tail-to-tail fashion. JTV1 and PMS2 are separated by approximately 200 base pairs and are arranged head-to-head. JTV1 is transcribed in the opposite direction compared to HRI and PMS2. The function of the JTV1 gene product is unknown.
Synonyms:	JTV-1; JTV1; P38; PRO0992



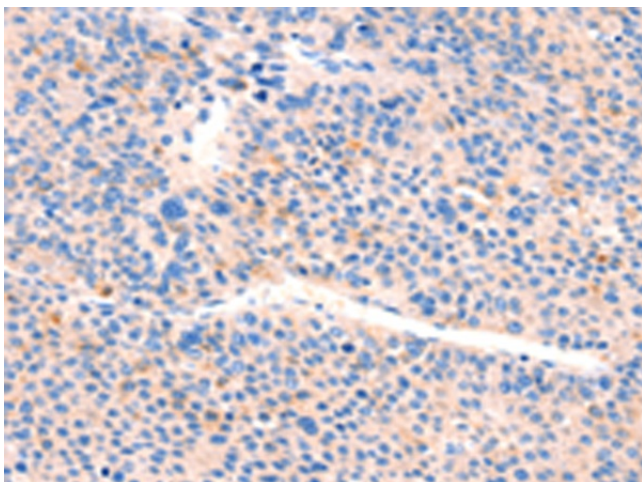
[View online »](#)

Protein Families: Stem cell - Pluripotency

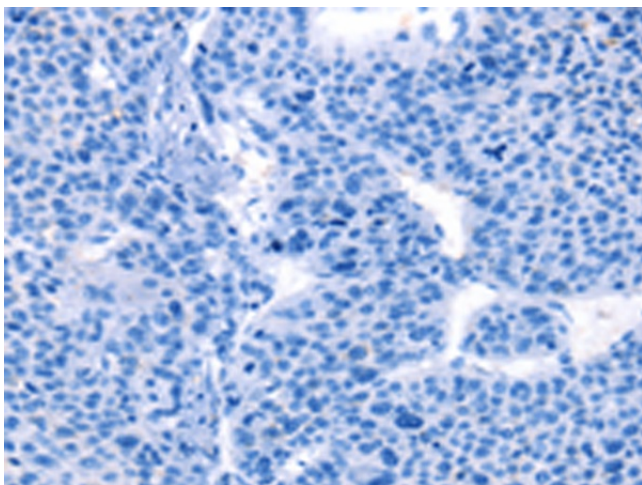
### Product images:



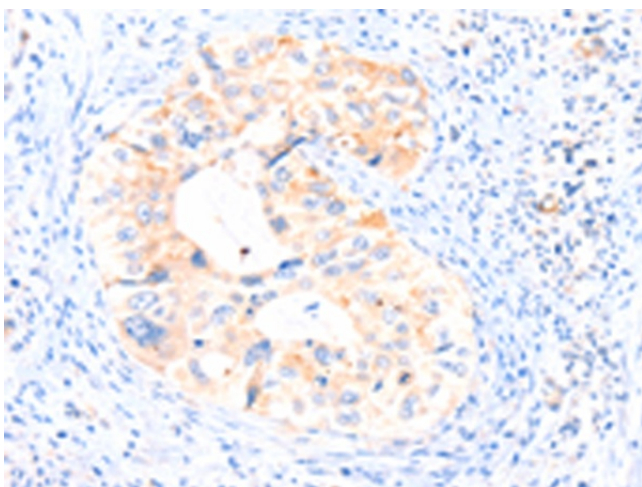
Gel: 12%SDS-PAGE  
Lysate: 40 µg  
Lane 1-2: A549 cells  
NIH/3T3 cells  
Primary antibody: [TA350792] (AIMP2 Antibody)  
at dilution 1/200  
Secondary antibody: Goat anti rabbit IgG at  
1/8000 dilution  
Exposure time: 10 seconds



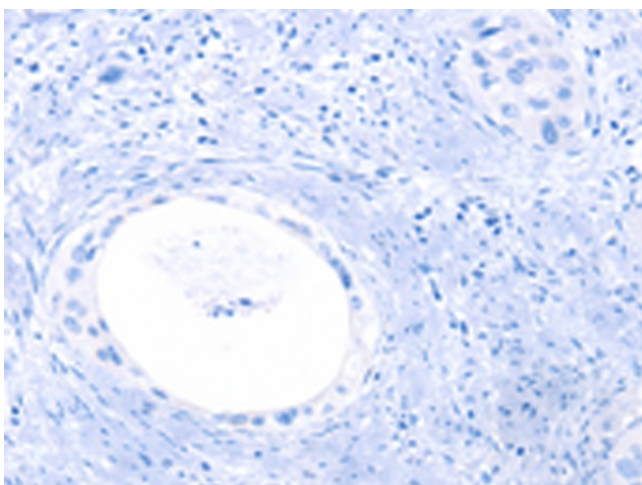
Immunohistochemistry of paraffin-embedded  
Human liver cancer tissue using [TA350792]  
(AIMP2 Antibody) at dilution 1/25 (Original  
magnification: ×200)



Immunohistochemistry of paraffin-embedded Human liver cancer tissue using [TA350792] (AIMP2 Antibody) at dilution 1/25, treated with synthetic peptide. (Original magnification: ×200)



Immunohistochemistry of paraffin-embedded Human cervical cancer tissue using [TA350792] (AIMP2 Antibody) at dilution 1/25 (Original magnification: ×200)



Immunohistochemistry of paraffin-embedded Human cervical cancer tissue using [TA350792] (AIMP2 Antibody) at dilution 1/25, treated with synthetic peptide. (Original magnification: ×200)