

## Product datasheet for **TA350791S**

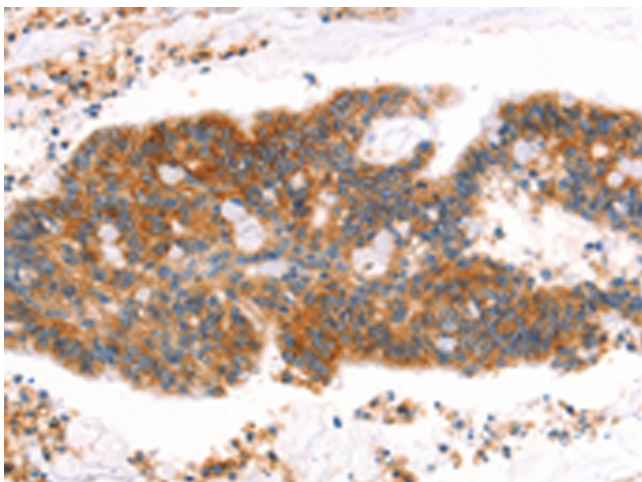
### I Afadin (AFDN) Rabbit Polyclonal Antibody

#### Product data:

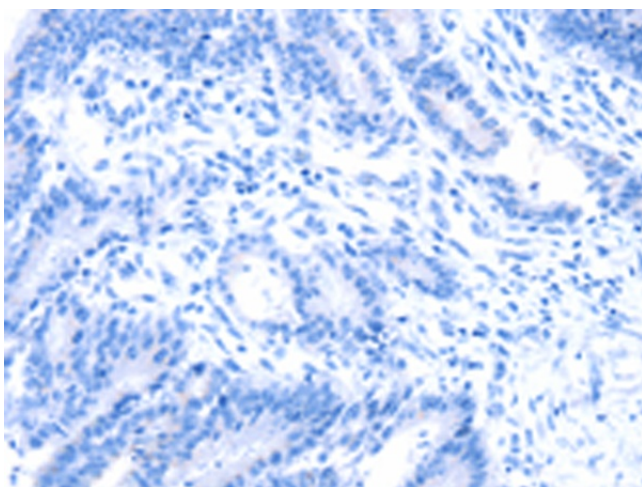
Product Type:	Primary Antibodies
Applications:	IHC
Recommended Dilution:	IHC: 50-200 Positive control: Human colon cancer Predicted cell location: Cytoplasm
Reactivity:	Human, Mouse, Rat
Host:	Rabbit
Isotype:	IgG
Clonality:	Polyclonal
Immunogen:	Synthetic peptide of human MLLT4
Formulation:	pH7.4 PBS, 0.05% NaN <sub>3</sub> , 40% Glycerol
Purification:	Antigen affinity purification
Conjugation:	Unconjugated
Storage:	Store at -20°C as received.
Stability:	Stable for 12 months from date of receipt.
Gene Name:	myeloid/lymphoid or mixed-lineage leukemia; translocated to, 4
Database Link:	<a href="#">NP_005927</a> <a href="#">Entrez Gene 17356 Mouse</a> <a href="#">Entrez Gene 26955 Rat</a> <a href="#">Entrez Gene 4301 Human</a> <a href="#">P55196</a>
Background:	This gene encodes a multi-domain protein involved in signaling and organization of cell junctions during embryogenesis. It has also been identified as the fusion partner of acute lymphoblastic leukemia (ALL-1) gene, involved in acute myeloid leukemias with t(6;11) (q27;q23) translocation. Alternatively spliced transcript variants encoding different isoforms have been described for this gene, however, not all have been fully characterized.
Synonyms:	AF-6; AF6; AFADIN; FLJ34371; RP3-431P23.3
Protein Families:	Druggable Genome
Protein Pathways:	Adherens junction, Leukocyte transendothelial migration, Tight junction



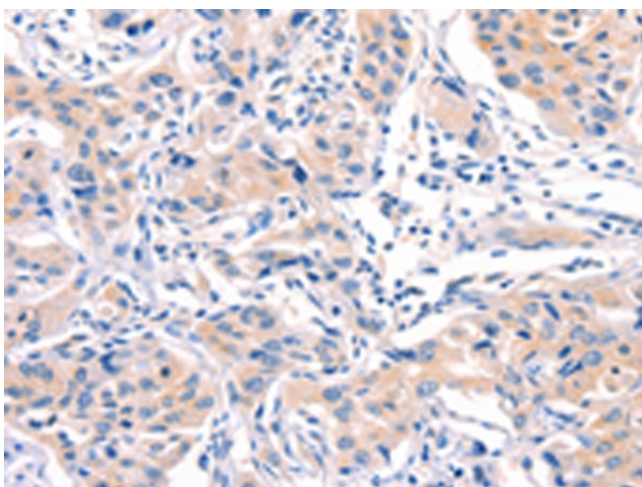
[View online »](#)

**Product images:**

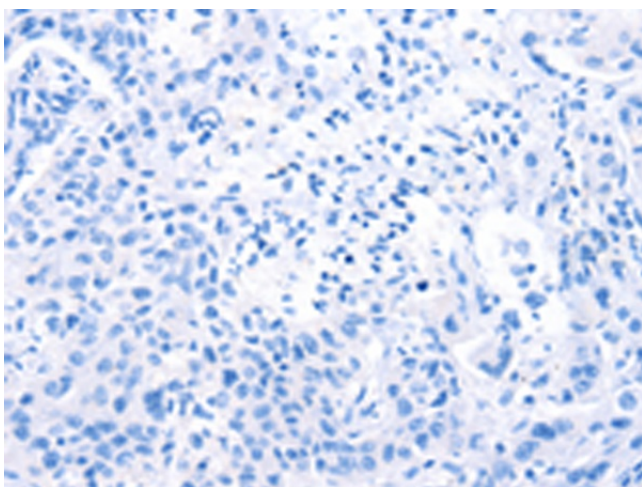
Immunohistochemistry of paraffin-embedded Human colon cancer tissue using [TA350791] (AFDN Antibody) at dilution 1/40 (Original magnification:  $\times 200$ )



Immunohistochemistry of paraffin-embedded Human colon cancer tissue using [TA350791] (AFDN Antibody) at dilution 1/40, treated with synthetic peptide. (Original magnification:  $\times 200$ )



Immunohistochemistry of paraffin-embedded Human lung cancer tissue using [TA350791] (AFDN Antibody) at dilution 1/40 (Original magnification:  $\times 200$ )



Immunohistochemistry of paraffin-embedded Human lung cancer tissue using [TA350791] (AFDN Antibody) at dilution 1/40, treated with synthetic peptide. (Original magnification:  $\times 200$ )