

Product datasheet for **TA350789**

ACP4 Rabbit Polyclonal Antibody

Product data:

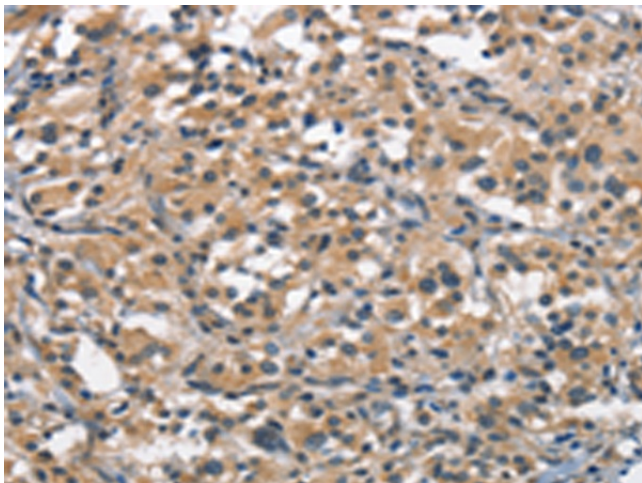
Product Type:	Primary Antibodies
Applications:	IHC
Recommended Dilution:	IHC: 25-100 Positive control: Human thyroid cancer Predicted cell location: Cytoplasm
Reactivity:	Human, Mouse
Host:	Rabbit
Isotype:	IgG
Clonality:	Polyclonal
Immunogen:	Synthetic peptide of human ACPT
Formulation:	pH7.4 PBS, 0.05% NaN ₃ , 40% Glycerol
Concentration:	lot specific
Purification:	Antigen affinity purification
Conjugation:	Unconjugated
Storage:	Store at -20°C as received.
Stability:	Stable for 12 months from date of receipt.
Gene Name:	acid phosphatase, testicular
Database Link:	NP_149059 Entrez Gene 93650 Human Q9BZG2
Background:	Acid phosphatases are enzymes capable of hydrolyzing orthophosphoric acid esters in an acid medium. This gene is up-regulated by androgens and is down-regulated by estrogens in the prostate cancer cell line. This gene exhibits a lower level of expression in testicular cancer tissues than in normal tissues. The protein encoded by this gene has structural similarity to prostatic and lysosomal acid phosphatases. Alternatively spliced transcript variants have been described, but their biological validity has not been determined.
Synonyms:	acid phosphatase; testicular; testicular acid phosphatase
Protein Families:	Druggable Genome, Transmembrane



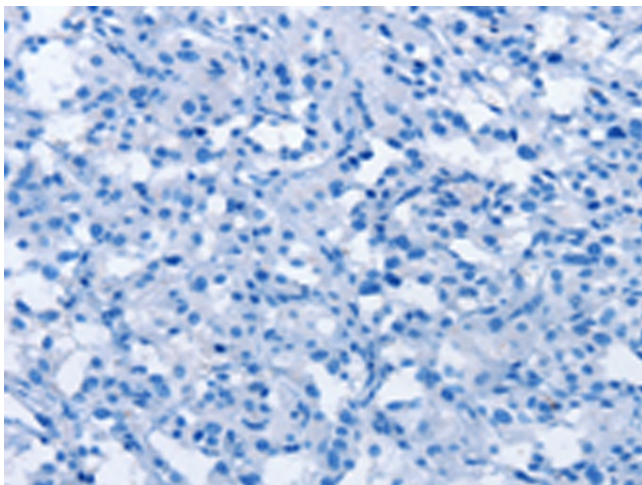
[View online »](#)

Protein Pathways: Riboflavin metabolism

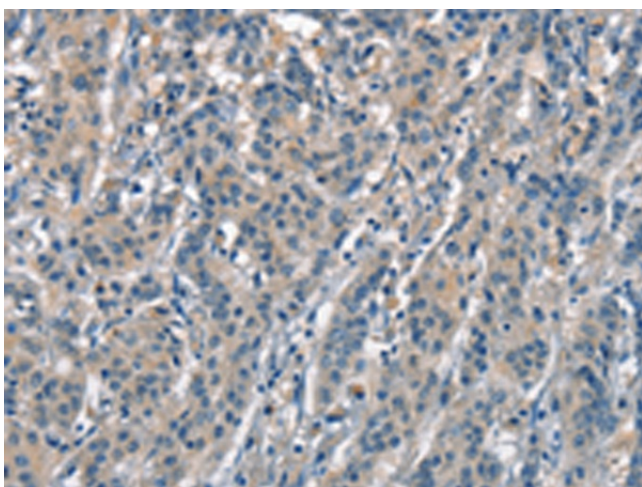
Product images:



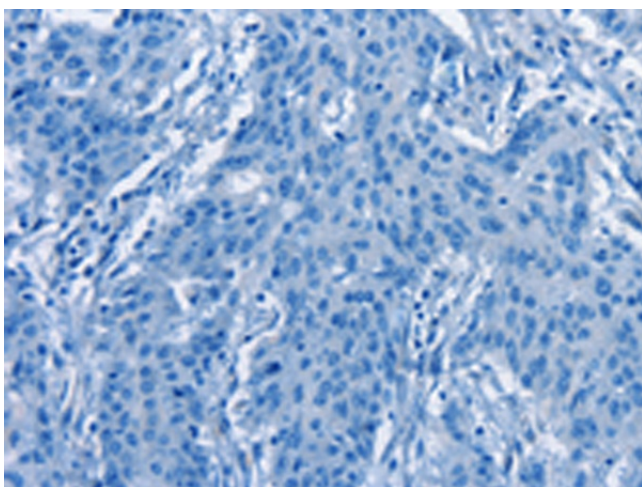
Immunohistochemistry of paraffin-embedded Human thyroid cancer tissue using TA350789 (ACP4 Antibody) at dilution 1/30 (Original magnification: $\times 200$)



Immunohistochemistry of paraffin-embedded Human thyroid cancer tissue using TA350789 (ACP4 Antibody) at dilution 1/30, treated with synthetic peptide. (Original magnification: $\times 200$)



Immunohistochemistry of paraffin-embedded Human gastric cancer tissue using TA350789 (ACP4 Antibody) at dilution 1/30 (Original magnification: $\times 200$)



Immunohistochemistry of paraffin-embedded Human gastric cancer tissue using TA350789 (ACP4 Antibody) at dilution 1/30, treated with synthetic peptide. (Original magnification: $\times 200$)