

## Product datasheet for **TA350787S**

### AARE (APEH) Rabbit Polyclonal Antibody

#### Product data:

Product Type:	Primary Antibodies
Applications:	IHC, WB
Recommended Dilution:	WB: 500-2000 WB positive control: Hela cells IHC: 50-200 Positive control: Human breast cancer Predicted cell location: Cytoplasm
Reactivity:	Human, Mouse, Rat
Host:	Rabbit
Isotype:	IgG
Clonality:	Polyclonal
Immunogen:	Synthetic peptide of human APEH
Formulation:	pH7.4 PBS, 0.05% NaN <sub>3</sub> , 40% Glycerol
Purification:	Antigen affinity purification
Conjugation:	Unconjugated
Storage:	Store at -20°C as received.
Stability:	Stable for 12 months from date of receipt.
Predicted Protein Size:	81 kDa
Gene Name:	acylaminoacyl-peptide hydrolase
Database Link:	<a href="#">NP_001631</a> <a href="#">Entrez Gene 24206 Rat</a> <a href="#">Entrez Gene 235606 Mouse</a> <a href="#">Entrez Gene 327 Human</a> <a href="#">P13798</a>



[View online »](#)

**Background:**

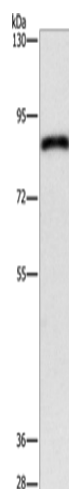
This gene encodes the enzyme acylpeptide hydrolase, which catalyzes the hydrolysis of the terminal acetylated amino acid preferentially from small acetylated peptides. The acetyl amino acid formed by this hydrolase is further processed to acetate and a free amino acid by an aminoacylase. This gene is located within the same region of chromosome 3 (3p21) as the aminoacylase gene, and deletions at this locus are also associated with a decrease in aminoacylase activity. The acylpeptide hydrolase is a homotetrameric protein of 300 kDa with each subunit consisting of 732 amino acid residues. It can play an important role in destroying oxidatively damaged proteins in living cells. Deletions of this gene locus are found in various types of carcinomas, including small cell lung carcinoma and renal cell carcinoma.

**Synonyms:**

AARE; ACPH; APH; D3F15S2; D3S48E; DNF15S2; OPH

**Protein Families:**

Druggable Genome, Protease

**Product images:**

Gel: 6%SDS-PAGE

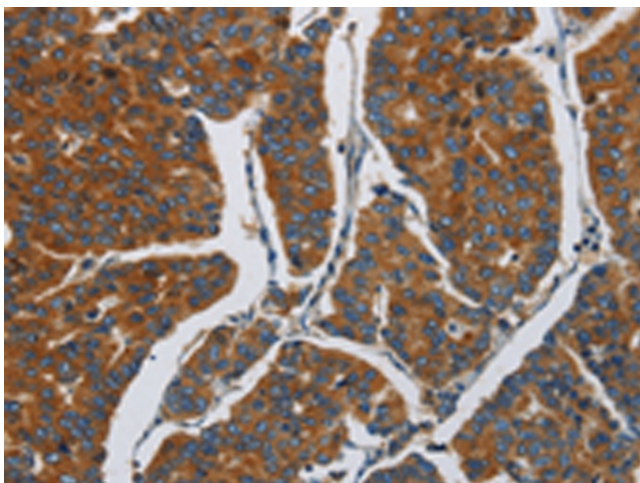
Lysate: 40 µg

Lane: HeLa cells

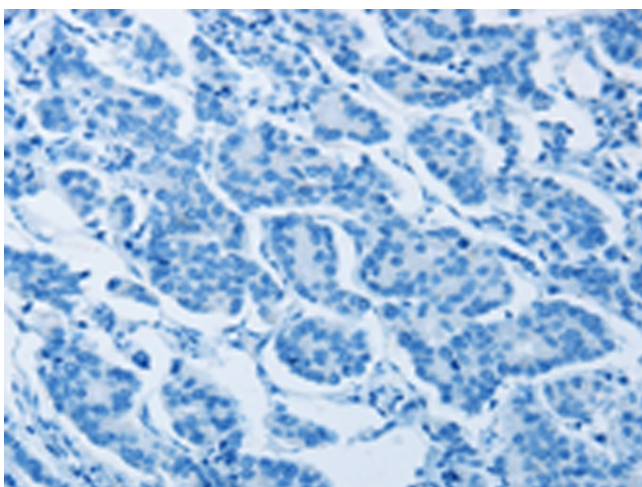
Primary antibody: [TA350787] (APEH Antibody) at dilution 1/900

Secondary antibody: Goat anti rabbit IgG at 1/8000 dilution

Exposure time: 1 minute



Immunohistochemistry of paraffin-embedded Human breast cancer tissue using [TA350787] (APEH Antibody) at dilution 1/30 (Original magnification: ×200)



Immunohistochemistry of paraffin-embedded Human breast cancer tissue using [TA350787] (APEH Antibody) at dilution 1/30, treated with synthetic peptide. (Original magnification: ×200)