

Product datasheet for **TA350786S**

PRKX Rabbit Polyclonal Antibody

Product data:

Product Type:	Primary Antibodies
Applications:	IHC, WB
Recommended Dilution:	WB: 200-1000 WB positive control: A549, Jurkat, 293T and K562 cells IHC: 15-50 Positive control: Human liver cancer Predicted cell location: Cytoplasm
Reactivity:	Human
Host:	Rabbit
Isotype:	IgG
Clonality:	Polyclonal
Immunogen:	Synthetic peptide of human PRKX
Formulation:	pH7.4 PBS, 0.05% NaN ₃ , 40% Glycerol
Purification:	Antigen affinity purification
Conjugation:	Unconjugated
Storage:	Store at -20°C as received.
Stability:	Stable for 12 months from date of receipt.
Predicted Protein Size:	41 kDa
Gene Name:	protein kinase, X-linked
Database Link:	NP_005035 Entrez Gene 5613 Human P51817



[View online »](#)

Background:

This gene encodes a serine threonine protein kinase that has similarity to the catalytic subunit of cyclic AMP dependent protein kinases. The encoded protein is developmentally regulated and may be involved in renal epithelial morphogenesis. This protein may also be involved in macrophage and granulocyte maturation. Abnormal recombination between this gene and a related pseudogene on chromosome Y is a frequent cause of sex reversal disorder in XX males and XY females. Pseudogenes of this gene are found on chromosomes X, 15 and Y.

Synonyms:

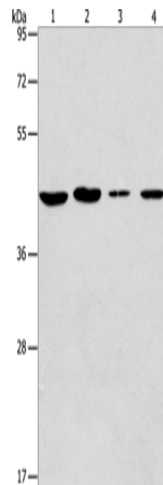
PKX1

Protein Families:

Druggable Genome, Protein Kinase

Protein Pathways:

Apoptosis, Calcium signaling pathway, Chemokine signaling pathway, Dilated cardiomyopathy, Gap junction, GnRH signaling pathway, Hedgehog signaling pathway, Insulin signaling pathway, Long-term potentiation, MAPK signaling pathway, Melanogenesis, Olfactory transduction, Oocyte meiosis, Prion diseases, Progesterone-mediated oocyte maturation, Taste transduction, Vascular smooth muscle contraction, Vibrio cholerae infection, Wnt signaling pathway

Product images:

Gel: 10%SDS-PAGE

Lysate: 40 µg

Lane 1-4: A549 cells

Jurkat cells

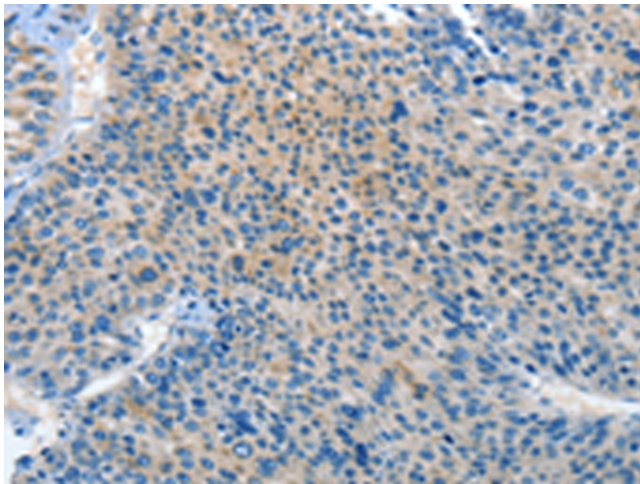
293T cells

K562 cells

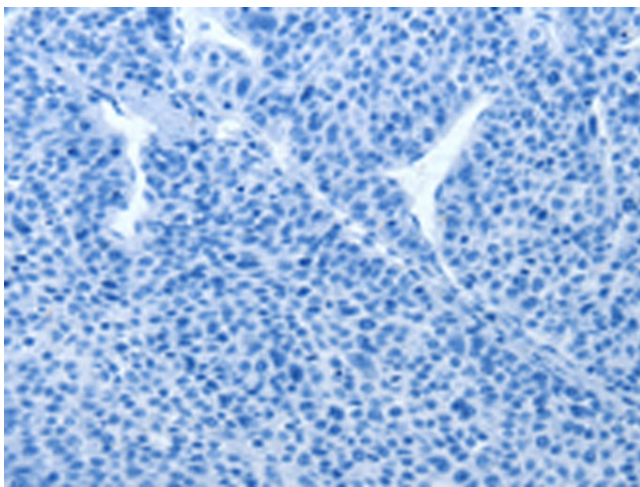
Primary antibody: [TA350786] (PRKX Antibody) at dilution 1/200

Secondary antibody: Goat anti rabbit IgG at 1/8000 dilution

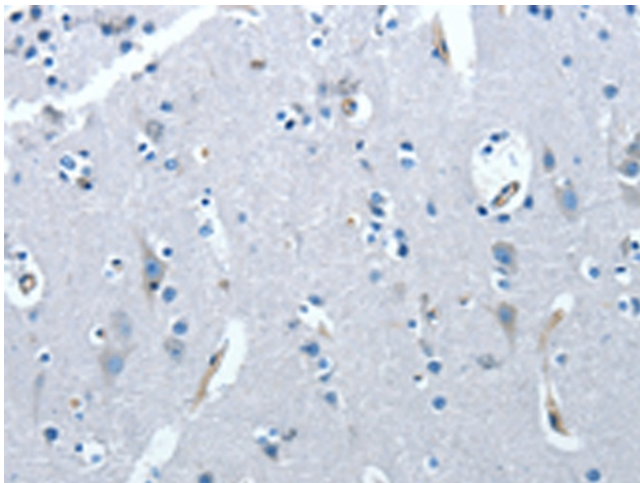
Exposure time: 20 seconds



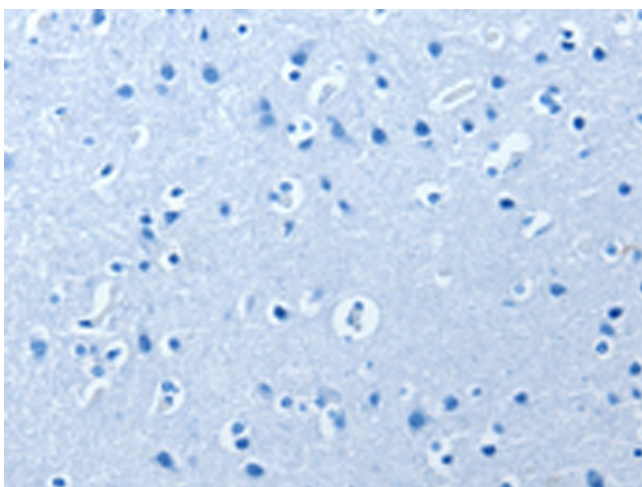
Immunohistochemistry of paraffin-embedded Human liver cancer tissue using [TA350786] (PRKX Antibody) at dilution 1/20 (Original magnification: $\times 200$)



Immunohistochemistry of paraffin-embedded Human liver cancer tissue using [TA350786] (PRKX Antibody) at dilution 1/20, treated with synthetic peptide. (Original magnification: $\times 200$)



Immunohistochemistry of paraffin-embedded Human brain tissue using [TA350786] (PRKX Antibody) at dilution 1/20 (Original magnification: $\times 200$)



Immunohistochemistry of paraffin-embedded Human brain tissue using [TA350786] (PRKX Antibody) at dilution 1/20, treated with synthetic peptide. (Original magnification: $\times 200$)