

Product datasheet for **TA350784S**

Eph receptor B3 (EPHB3) Rabbit Polyclonal Antibody

Product data:

Product Type:	Primary Antibodies
Applications:	IHC
Recommended Dilution:	IHC: 25-100 Positive control: Human liver cancer Predicted cell location: Cytoplasm
Reactivity:	Human, Mouse
Host:	Rabbit
Isotype:	IgG
Clonality:	Polyclonal
Immunogen:	Synthetic peptide of human EPHB3
Formulation:	pH7.4 PBS, 0.05% NaN ₃ , 40% Glycerol
Purification:	Antigen affinity purification
Conjugation:	Unconjugated
Storage:	Store at -20°C as received.
Stability:	Stable for 12 months from date of receipt.
Gene Name:	EPH receptor B3
Database Link:	NP_004434 Entrez Gene 13845 Mouse Entrez Gene 2049 Human P54753

Background: Ephrin receptors and their ligands, the ephrins, mediate numerous developmental processes, particularly in the nervous system. Based on their structures and sequence relationships, ephrins are divided into the ephrin-A (EFNA) class, which are anchored to the membrane by a glycosylphosphatidylinositol linkage, and the ephrin-B (EFNB) class, which are transmembrane proteins. The Eph family of receptors are divided into two groups based on the similarity of their extracellular domain sequences and their affinities for binding ephrin-A and ephrin-B ligands. Ephrin receptors make up the largest subgroup of the receptor tyrosine kinase (RTK) family. This gene encodes a receptor for ephrin-B family members.

Synonyms: EK2; ETK2; HEK2; TYRO6

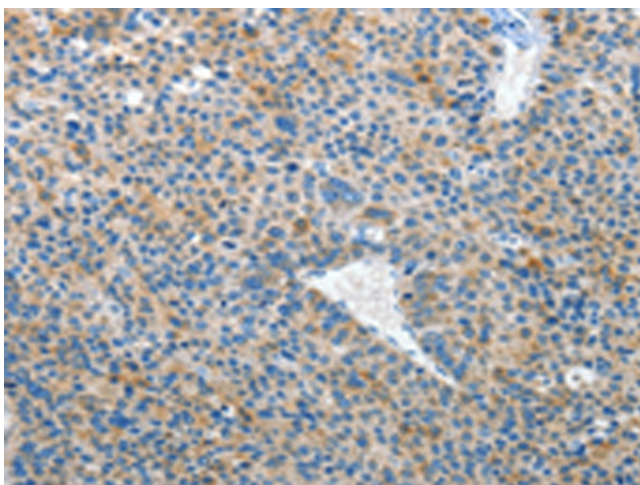


[View online »](#)

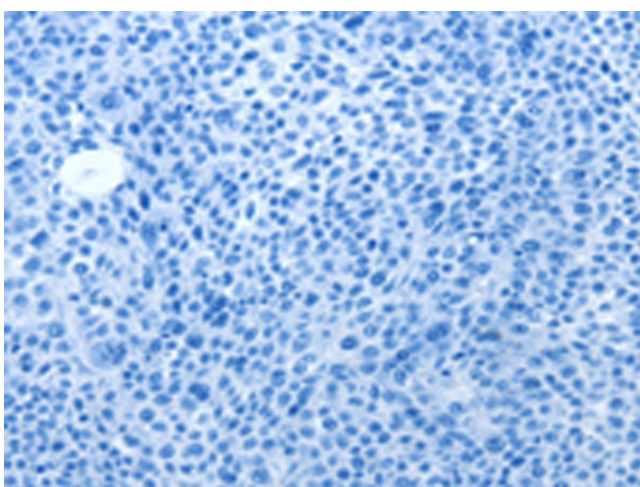
Protein Families: Druggable Genome, Protein Kinase, Transmembrane

Protein Pathways: Axon guidance

Product images:



Immunohistochemistry of paraffin-embedded Human liver cancer tissue using [TA350784] (EPHB3 Antibody) at dilution 1/50 (Original magnification: $\times 200$)



Immunohistochemistry of paraffin-embedded Human liver cancer tissue using [TA350784] (EPHB3 Antibody) at dilution 1/50, treated with synthetic peptide. (Original magnification: $\times 200$)